

Engineered OverEZee™ Sub-Purlins are used as a structural connection to the existing steel purlins. OverEZee™ are Code Compliant, no liability for failures from inadequate attachment.

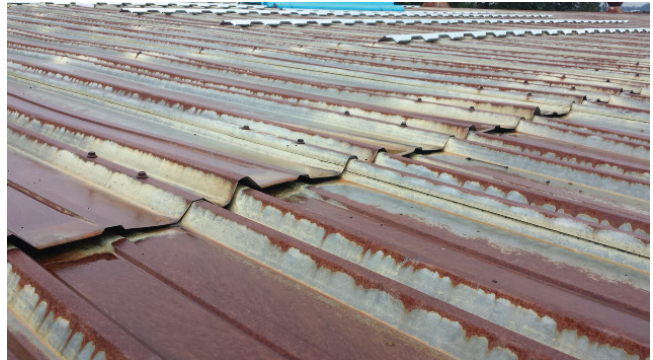
## FEATURES & BENEFITS

- 10' lengths
- Pre-punched holes
- Custom notched for existing roof profile
- System allows new installation
- No tear off = lower cost system
- Saves removal disposal fees
- Safer installation
- Little disruption to building occupants
- Custom sizes available  
*see your Taylor Metal Representative for details*

## MATERIAL SPECIFICATIONS

- 16 gauge with yield of 50,000 KSI
- G-90 Galvanized per ASTM A 653
- ASTM A 1101 with 50,000 KSI

Before:



During:



After:

