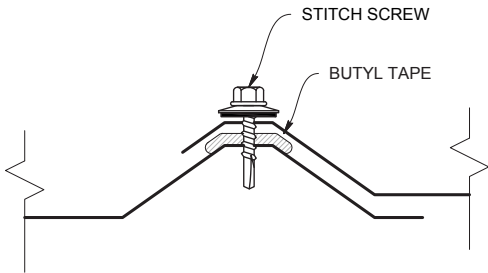


LAP DETAIL



KEY FEATURES

- 29, 26 and 24 gauge Tru-Gauge™ and .032" Aluminum
- ASTM 653 and 792
- UL Class A Fire rated and UL Class 4 Impact (hail) rated
- Recommended minimum pitch 3:12
- Custom lengths 1' to 45'-No short length cut charge
(For longer lengths, please inquire)
- Fiberglass and Polycarbonate skylight panels available to match profile
- Panel is available in a wide variety of "Cool" baked on ArmorTech™ or "Cool" baked on Kynar 500® colors. Rusteel Plus™ (A606) and .032" Aluminum
- Easy-to-order standard and custom made trim and accessory packages available for specific project needs
- Color matched neoprene washered screws
- Long length flashings available up to 20'11"

Allowable Live Load in PSF			Span in feet (steel only)					
SPAN TYPE	GAUGE	KSI	2'	2' 6"	3'	3' 6"	4'	5'
DOUBLE SPAN	29	80	105	66	45	33	25	16
THREE OR MORE SPANS	29	80	133	87	62	42	35	20
DOUBLE SPAN	26	80	150	96	66	50	38	24
THREE OR MORE SPANS	26	80	188	119	83	62	47	29

MATERIAL SPECIFICATIONS

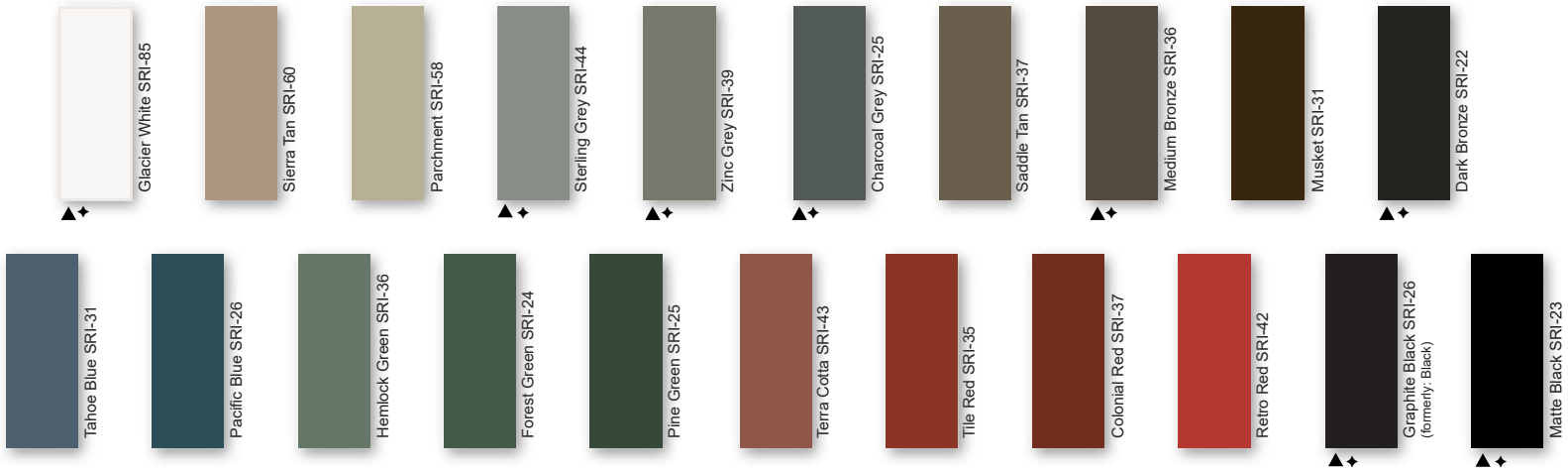
- 29 gauge ArmorTech™ Painted Steel
.015" (Thickness prior to painting)
G-90 Galvanized or AZ-50
- 26 gauge ArmorTech™ Painted Steel
.019" (Thickness prior to painting)
G-90 Galvanized or AZ-50
- 29, 26, 24 & 22 gauge bare Zinalume® Plus AZ-55
(No finish warranty – 25 yr. perforation warranty)
- 29 & 26 gauge bare G-90 Galvanized
(No finish warranty – no finish warranty)
- 24 gauge Kynar 500® Painted Steel
.0236" (Thickness prior to painting)
G-90 Galvanized or AZ-50
- 22 gauge Kynar 500® Painted Steel
.029" (Thickness prior to painting)
G-90 Galvanized or AZ-50
- .032" Kynar 500® Painted Aluminum
- Kynar 500® and substrate testing data available
(See website)

STANDARD COOL ARMORTECH™ SMP COLORS 40-Year Residential Manufacturer's Limited Warranty

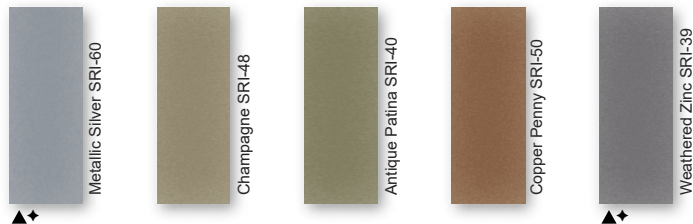


40-Year Residential / 20 and 30 Year Commercial Manufacturer's Limited Warranty

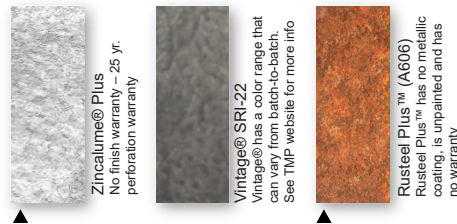
STANDARD COOL KYNAR 500® COLORS



PREMIUM METALLIC COOL KYNAR® COLORS



SPECIALIZED MATERIAL



These printed chips provide a close representation of the colors.

Metal samples are available upon request. Coatings are low gloss 10-15% sheen. SRI = Solar Reflective Index. SRI values listed above are in accordance with ASTM E1980 and are based on actual testing. ***Oil Canning is not a cause for material rejection***

Standard Panels			
Gauge	Color	LBS SQFT	LBS LF
26	ArmorTech	0.88	2.7
24	Kynar	1.2	3.45
22	▲	1.51	4.33
.032 Alum	+	0.56	1.62
29	ArmorTech	0.64	2.02

