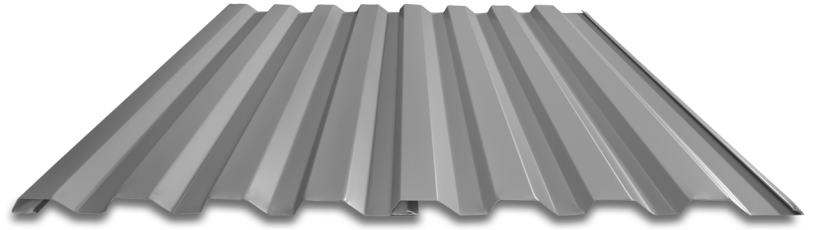
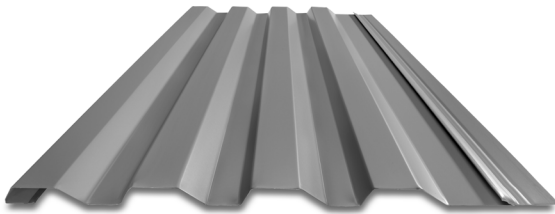


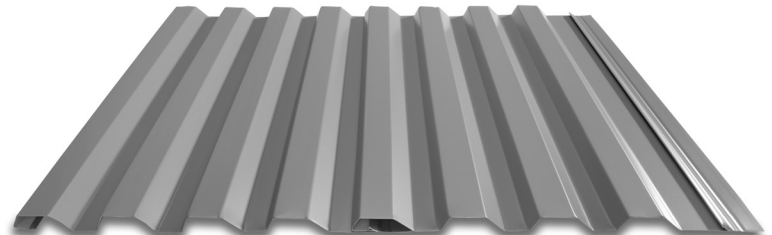
CE-A with Clip Flange



2 CE-A Panels with Clip Flange



CE-A with Screw Flange



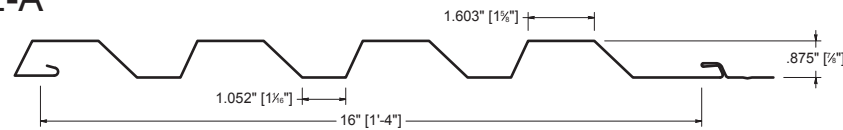
2 CE-A Panels with Screw Flange

KEY FEATURES

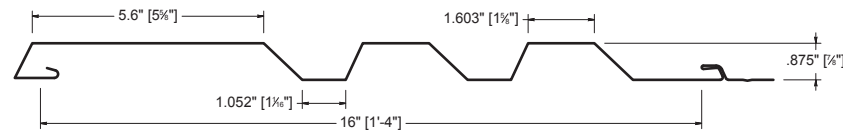
- Contour Express Series™ offers faster lead times
- 8" and 16" panel coverage
- 24 and 22 gauge Tru-Gauge™ and .032 Aluminum
- CE-A: 2' to 60' panel lengths
CE-B & CE-E: 2' to 20' panel lengths
- Seamless runs, fewer runs and less labor
- ASTM 283, ASTM 330, ASTM 331
- ASTM E1592 - structural uniform static air pressure
- 7/8" deep panel
- Application can be vertical or horizontal
- Acceptable for use as a soffit panel
- Panels are interchangeable
- Available with screw flange or clip flange
- Clip systems available – flush mount and high performance standoff clip
- Call about Joint Sealant option

PANEL PROFILES

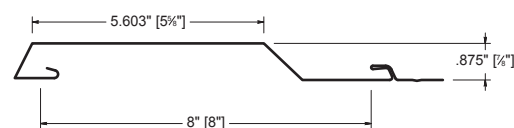
CE-A



CE-B



CE-E

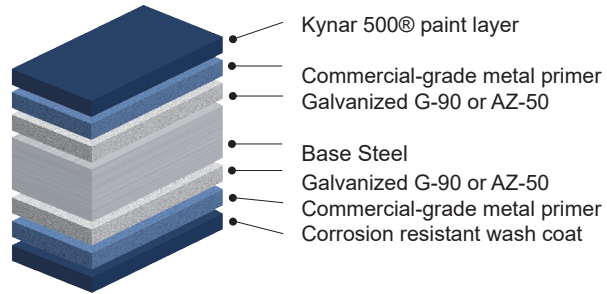


MATERIAL SPECIFICATIONS

- 24 gauge Kynar 500® Painted Steel .0236" (Thickness prior to painting) Galvanized G-90 or AZ-50
- 24 & 22 gauge Zincolume® Plus AZ-55 (No finish warranty – 25 yr. perforation warranty)
- ▲ 22 gauge Kynar 500® Painted Steel .029" (Thickness prior to painting) Galvanized G-90 or AZ-50
- 22 gauge Rusteel Plus™ (A606)
- 16 and 20 oz. Copper (Please inquire)
- Kynar 500® and substrate testing data available (See website)
- "Oil canning" is an inherent characteristic of roof and wall products, not a defect, and is not a cause for panel rejection

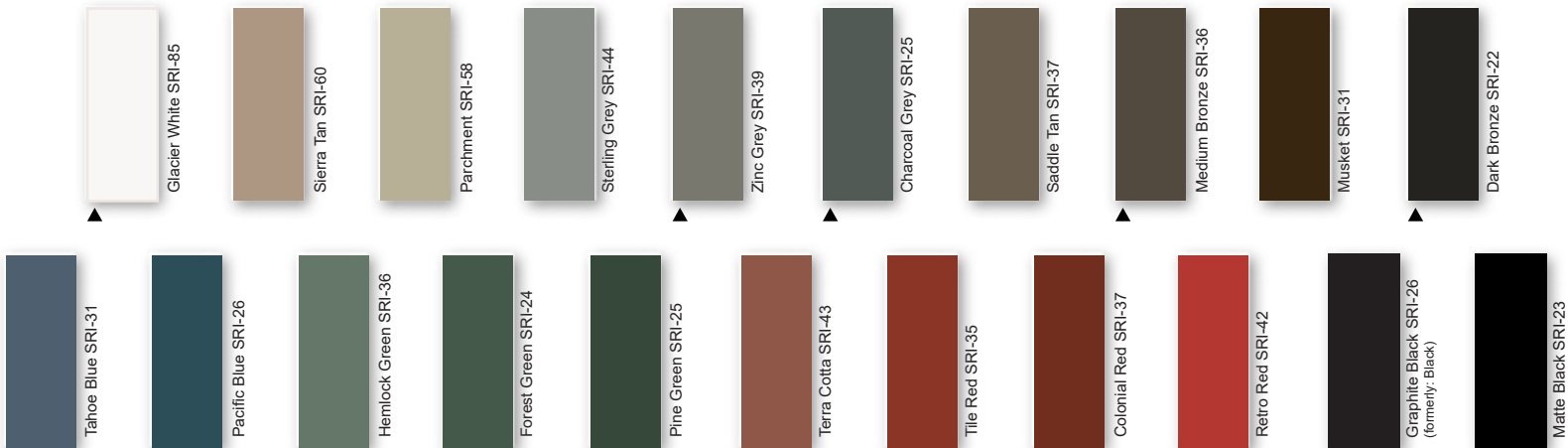
KEY FEATURES

- 21 Standard Colors, 5 Metallic Colors and 4 Specialized Materials
- Kynar 500® Paint System - the ultimate in exterior durability and color retention
- "Cool" color pigments are specially designed to reflect infrared light, reducing heat gain to dwelling, and conform with ENERGY STAR® criteria
- Superior quality, two coat, 70% resin finish, applied at a 1 mil. thickness
- 40 year residential paint warranty
- 20 and 30 year commercial paint warranty: Contact TMP for warranty specifications

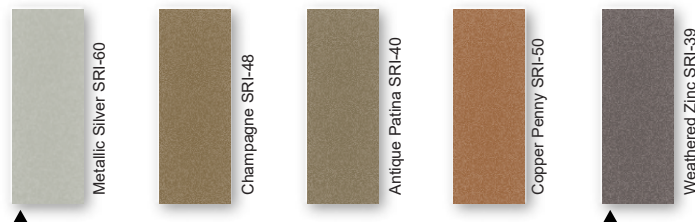


40-Year Residential / 20 and 30 Year Commercial Manufacturer's Limited Warranty

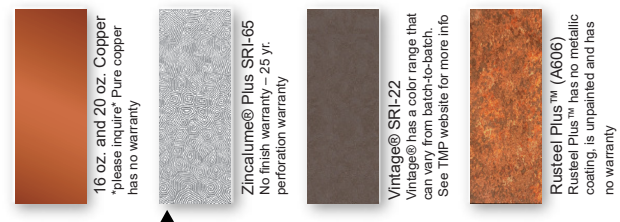
STANDARD COOL KYNAR 500® COLORS



PREMIUM METALLIC COOL KYNAR® COLORS



SPECIALIZED MATERIAL



These printed chips provide a close representation of the colors.

Metal samples are available upon request. Coatings are low gloss 10-15% sheen. SRI = Solar Reflective Index. SRI values listed above are in accordance with ASTM E 1980 and are based on actual testing. ***Oil canning is not a cause for material rejection***