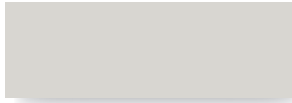
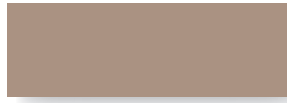


Standard Kynar 500® Coatings

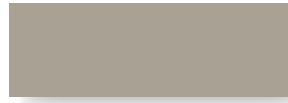
20 or 30-year Commercial, Non-Transferable, Non-Prorated, Limited Warranty
40-Year Residential, Transferable, Non-Prorated Limited Warranty



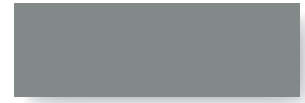
Glacier White SRI-85



Sierra Tan SRI-60



Parchment SRI-58



Sterling Grey SRI-44



Zinc Grey SRI-39



Charcoal Grey SRI-25



Saddle Tan SRI-37



Medium Bronze SRI-36



Tahoe Blue SRI-31



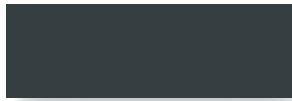
Pacific Blue SRI-26



Hemlock Green SRI-36



Forest Green SRI-24



Graphite Black SRI-26
Formerly: Black



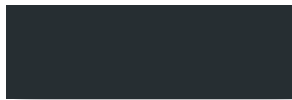
Dark Bronze SRI-22



Musket SRI-31



Pine Green SRI-25



Matte Black SRI-23



Terra Cotta SRI-43



Tile Red SRI-35

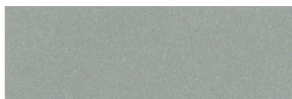


Colonial Red SRI-37

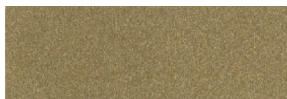


Retro Red SRI-42

Premium Metallic 500® Coatings *(Premium Pricing Applies)*



Metallic Silver SRI-60



Champagne SRI-48



Antique Patina SRI-40

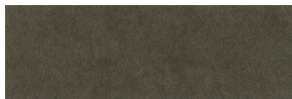


Weathered Zinc SRI-39



Copper Penny SRI-50

Premium Finish *(Premium Pricing Applies)*



Vintage® SRI-19

Vintage® is an innovative coating process over a G-90 metallic-coated steel surface. The process creates shade variations from light to dark, the lighter shade exhibiting a grey tone while the darker shade exhibits a bronze or brown tone. The dynamic, pre-aged appearance makes this a beautiful and durable product choice that is also graffiti resistant. Vintage® comes with a 20 year warranty. Warranty can vary by environment, see TMP website for more information.

NOTE: Due to the coating process, Vintage® has a color range. Color can vary from batch-to-batch and have directional variations.

Weathering Materials *(These materials will change appearance over time)*



16 oz. Copper
20 oz. Copper please inquire
Pure Copper has no warranty



Zincalume® Plus AZ-55/
Galvalume® SRI-65

Zincalume® Plus AZ-55 is a 55% aluminum, 45% zinc metallic coating over steel. It is a non-painted finish with a 25 yr. warranty



SRI=Solar Reflective Index. SRI values listed above are in accordance with ASTM E1980 and are based on actual testing. (CRRC) Cool Roof Rating Council SRI values (CA Title 24, ENERGY STAR®) are based on the grouping of colors (color families). CRRC SRI values will differ, as each color is not tested in the color family option. Coatings are low gloss 10-15% sheen. These printed chips provide a close representation of the colors. Metal samples are available upon request. Custom colors available. "Oil canning" is an inherent characteristic of roof and wall products, and not a defect, which is not a cause for panel rejection.

Taylor Metal Products Cool Kynar 500®

All Taylor Metal Products Kynar 500® coatings utilize pigments that are specifically designed to reflect infrared light, help reduce the heat gain of a dwelling, and conform with ENERGY STAR® criteria for steep slope cool roofing products.

PVDF is a fluoropolymer that is manufactured under the trademarked names Duranar (PPG) and Kynar 500®. Paint finishes containing a minimum 70% PVDF resin meet the high-performance weathering criteria established by the American Architectural Manufacturing Association and are allowed to carry the Kynar 500® trademarked name.

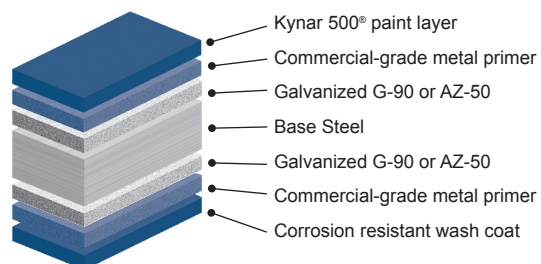
KYNAR 500® SPECIFICATIONS - Polyvinylidene Fluoride (PVDF)*		
	Aluminum Substrate	Coated Steel¹ Substrate
Dry Film Thickness (nominal) ASTM D1400	0.20 - 0.30 mil primer 0.70 - 0.80 mil topcoat	0.20 mil primer 0.75 mil topcoat
Gloss ASTM D523 Standard @ 60° DURANAR LG @ 85°	25 - 35 <10	25 - 35 <10
Pencil Hardness ASTM D3363	F-2H	F-2H
Flexibility² T-bend, ASTM D4145	0-2 T-bend; No pick-off	2 T-bend; No pick-off
Adhesion ASTM D3359 Reverse impact 1/16" crosshatch	No adhesion loss	No adhesion loss
Reverse Impact ASTM D2794 1.5 x metal thickness (aluminum) 3.0 x metal thickness (coated steel)	No cracking or adhesion loss No cracking or adhesion loss	No cracking or adhesion loss No cracking or adhesion loss
Acid Resistance ASTM D1308 10% muriatic acid — 24 hrs. 20% sulfuric acid — 18 hrs.	No effect No effect	No effect No effect
Acid Rain Test Kesternich SO ₂ , DIN 50018	15 cycles min. No objectionable color change	15 cycles min. No objectionable color change
Alkali Resistance ASTM D1308 10%, 25% NaOH, 1 hr.	No effect	No effect
Salt Spray Resistance ASTM B117 5% salt fog @ 95°F	Passes 4000 hrs. Less than 1/16" avg. creepage from scribe: None or few #8 blisters	Passes 1000 hrs. Less than 1/8" avg. creepage from scribe; None or few #8 blisters
Humidity Resistance ASTM D714 ASTM D2247 100% relative humidity @ 95°F	Passes 4000 hrs. No #8 blisters	Passes 1500 hrs. No #8 blisters
Exterior Exposure 10 yrs. @ 45°, south Florida ASTM D2244 ASTM D4214	Max. 5 fade Max. 8 chalk	Max. 5 fade Max. 8 chalk

¹Coated Steel includes the following types of steel: G90 hot dip galvanized, Galdan, Galvalume, and Zinalume.

²Fracturing or rupturing of substrate will rupture coatings. Heavy gauge and clad steel substrates impose limitations on formability. DURANAR coatings are generally flexible beyond the point of substrate rupture.

This elite high-performance paint system is extremely durable, providing the most effective long-term protection against color fade and chalking, as well as superior resistance to surface damage encountered under normal environmental conditions. The unparalleled performance of the Cool Kynar 500® paint system is perfect for residential and commercial buildings.

With 22 standard colors and 5 premium metallic coatings, the Cool Kynar 500® Paint System is certain to provide any project with the highest quality protection and appearance.



July 2022