

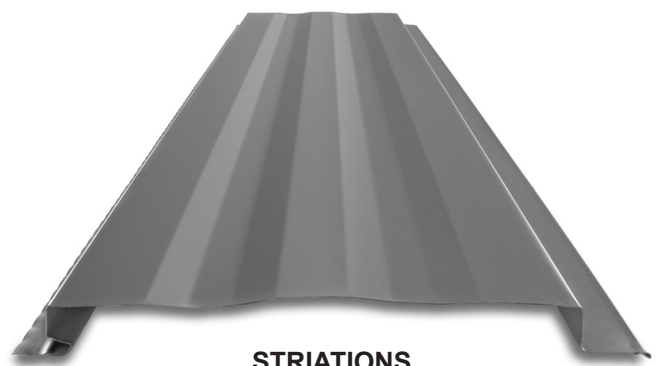


ICC
EVALUATION
SERVICE®

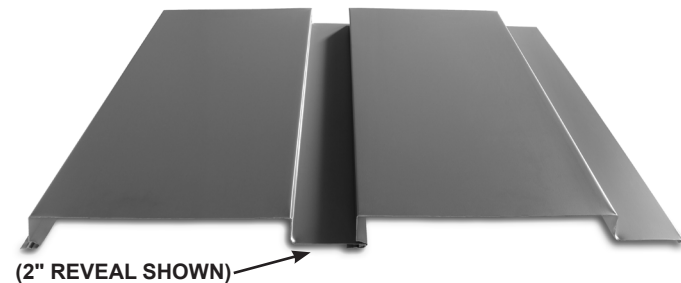
ICC-ER EVALUATION REPORT #5045 with CBC-CRC Supplement (coming 2023)



DOUBLE V-GROOVE
or Single V-Groove available



STRIATIONS



(2" REVEAL SHOWN)

2 FLAT PAN PANELS

REVEAL AVAILABLE: 1/2" to 3" in 1/2" INCREMENTS




KEY FEATURES

- 11" to 15" coverage
- 24 & 22 gauge Tru-Gauge™
- .032 & .040 Aluminum
- Custom Lengths 3' to 35'
(Inquire on longer or shorter lengths)
- 2' Shortcut capability (Fee applicable)
- Concealed Fasteners: fasteners cannot leak
- Versatile in wall and soffit applications
- Panel options: Striations, Single V-Groove, Double V-Groove, and Flat Pan
- ShadowLine™ can be perforated for soffit applications
- "Oil canning" is an inherent characteristic of roof and wall products, and not a defect, which is not a cause for panel rejection

ShadowLine™ will give your commercial or residential project a unique appearance. The panel reveal displays a shadowing effect that changes throughout the day, giving depth to your building. These panels are a perfect fit to be used on walls, soffits and fascia. With the 4 different panel styles available, your designs will come alive.

TESTING

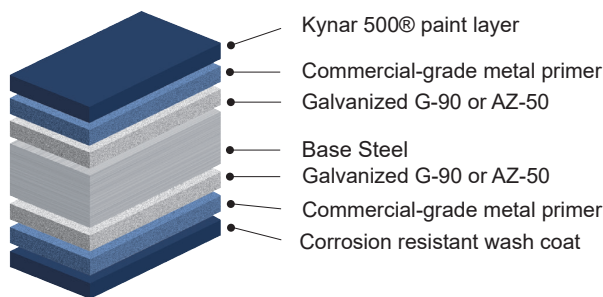
-  ICC-ESR #5045 with CBC-CRC Supplement
- ASTM E1592 - Structural uniform static air pressure
- ASTM E1680 Air Infiltration Roofing
- ASTM E283 Air Infiltration Siding
- ASTM E1646 Water Infiltration Roofing
- ASTM E331 Water Infiltration Siding

MATERIAL SPECIFICATIONS

- 24 Tru-Gauge™ Kynar 500® Painted Steel
- ▲ 22 Tru-Gauge™ Kynar 500® Painted Steel
- ♦ .032" Kynar 500® Painted Aluminum
- 24 Tru-Gauge™ G-90 Galvanized or AZ-50
- 24 and 22 Tru-Gauge™ bare Zincolume® Plus AZ-55
(No finish warranty – 25 yr. perforation warranty)
- G-90 Galvanized or AZ-50
- 24 Tru-Gauge™ Bonderized
- 22 gauge Rusteel Plus™ (A606)
- 16 OZ & 20 OZ Real Copper
- Kynar 500® and substrate testing data available
(See website)

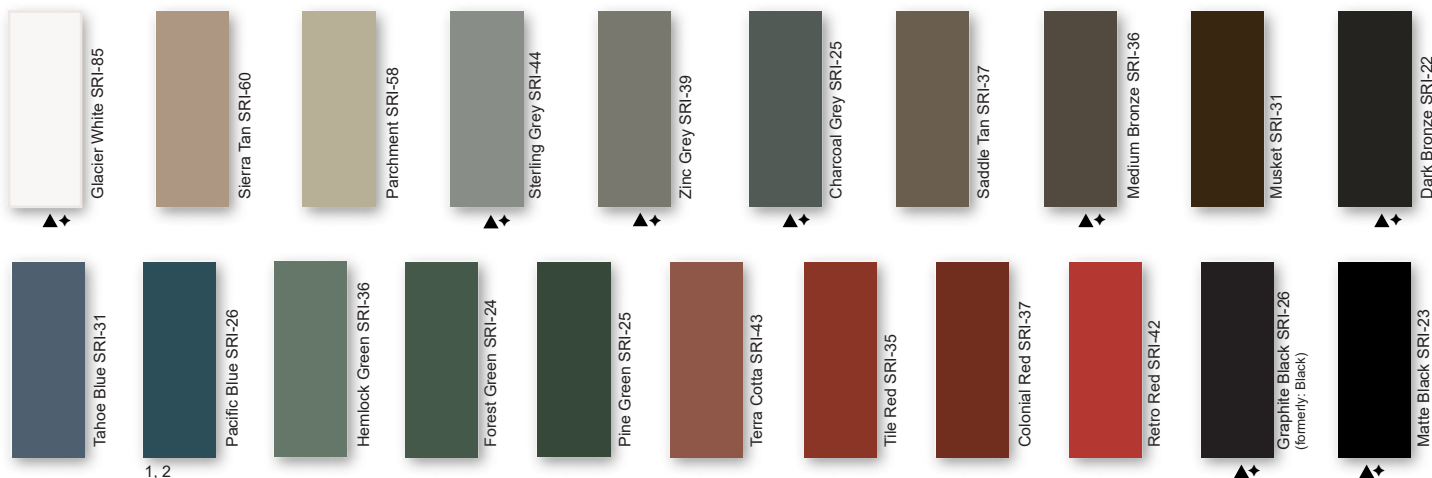
FINISHES

- 21 Standard Colors, 5 Metallic Colors and 4 Specialized Colors
- Kynar 500® Paint System - the ultimate in exterior durability and color retention
- “Cool” color pigments are specially designed to reflect infrared light, reducing heat gain to dwelling, and conform with ENERGY STAR® criteria
- Superior quality, two coat, 70% resin finish, applied at a 1 mil. thickness
- 40 year residential paint warranty
- 20 and 30 year commercial paint warranty: Contact TMP for warranty specifications
- “Oil Canning” is an inherent characteristic of roof and wall products, and not a defect, which is not a cause for panel rejection

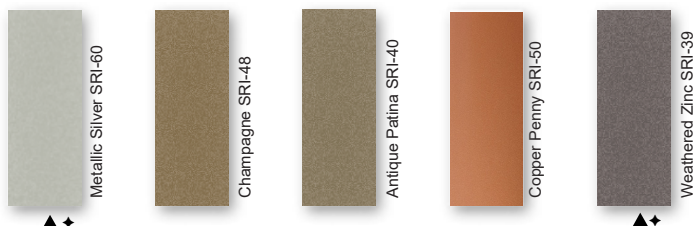


STANDARD COOL KYNAR 500® COLORS

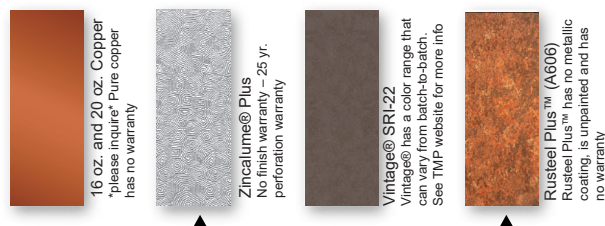
▲ 22 Tru-Gauge™
♦ .032 Aluminum



PREMIUM METALLIC COOL KYNAR® COLORS



SPECIALIZED MATERIAL



These printed chips provide a close representation of the colors.

Metal samples are available upon request. Coatings are low gloss 10-15% sheen.
SRI = Solar Reflective Index. SRI values listed above are in accordance with ASTM E 1890 and are based on actual testing. ***Oil canning is not a cause for material rejection***