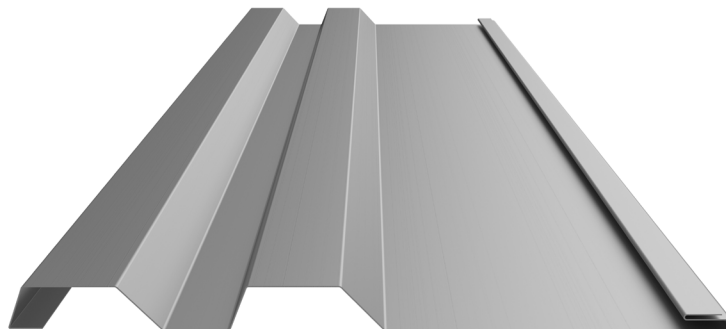


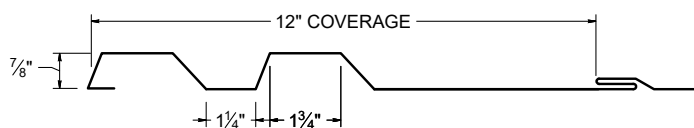


ICC
EVALUATION
SERVICE®

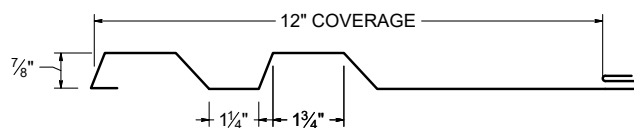
ICC-ES EVALUATION REPORT #5045 with CBC-CRC Supplement (coming 2024)



SCREW FLANGE ATTACHMENT

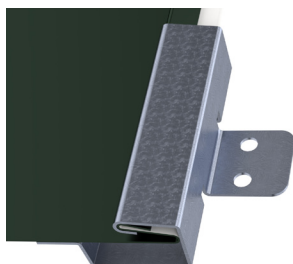


CLIP ATTACHMENT

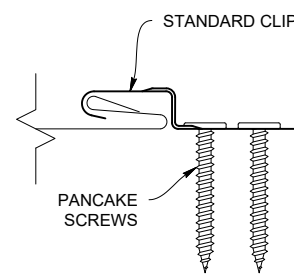
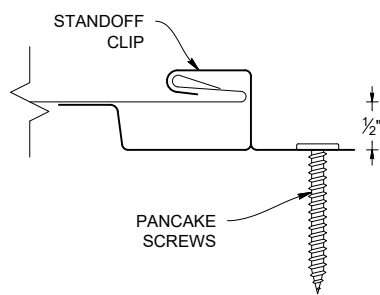
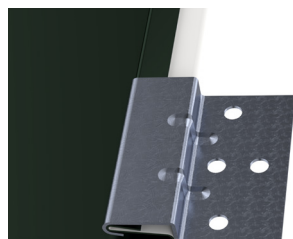


PANEL ATTACHMENT CLIP

STANDOFF CLIP




STANDARD CLIP



KEY FEATURES

- 12" panel coverage
- 24 and 22 Tru-Gauge™ and .032" and .040 Aluminum. Screw Flange and Clip attachment available
- Custom 20 & 18 Tru-Gauge™ and .050" and .063" Aluminum. These require the use of high performance clip. (please inquire)
- 2' to 20'10" panel lengths
- Custom profiles available
- Vertical or Horizontal Wall Application
- Acceptable for use as a soffit panel
- Interchangeable panel widths and configurations
- Perforated options available (please inquire)

TESTING

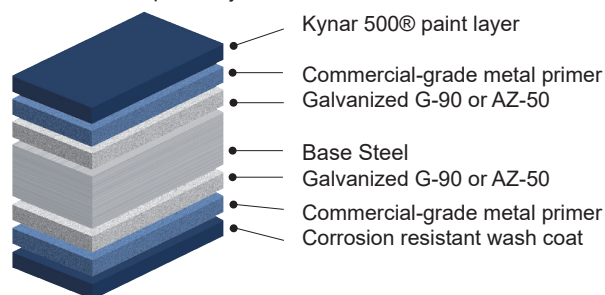
-  ICC-ESR #5045 with CBC-CRC Supplement (coming 2024)
- ASTM E331 - Water infiltration (wall)
- ASTM E283 - Air infiltration (wall)
- ASTM E1592 - Negative structural uniform static air pressure
- ASTM E1680 - Air infiltration (roof)
- ASTM E1646 - Water infiltration (roof)
- ASTM A653/A924 - G90 Galvanized
- ASTM A792 - Zincalume/Galvalume AZ-50/55
- ASTM B209 - Aluminum Substrate

MATERIAL SPECIFICATIONS

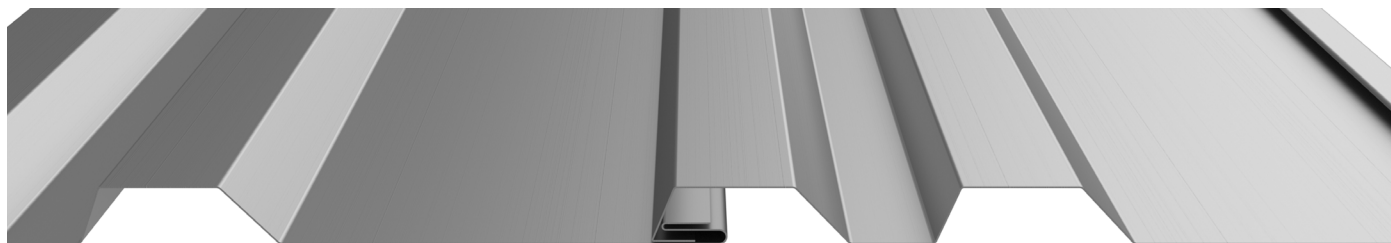
- 24 Tru-Gauge™ Kynar 500® Painted Steel Galvanized G-90 or AZ-50 Zincalume®
- 22 Tru-Gauge™ Kynar 500® Painted Steel Galvanized G-90 or AZ-50 Zincalume®
- 24 & 22 Tru-Gauge™ Zincalume® Plus (No finish warranty – 25 yr. perforation warranty)
- .032 Aluminum Kynar 500®
- 22 gauge Rusteel Plus™ (A606)
- 16 and 20 oz. Copper
- Kynar 500® and substrate testing data available (See website)
- .8mm and 1.0mm True Zinc on special request (please inquire)
- Heavier gauges available upon request – 20 gauge and 18 gauge steel; .040, .050 and .063 Aluminum (please inquire)

FINISHES

- 21 Standard Colors, 5 Metallic Colors and 4 Specialized Materials
- Kynar 500® Paint System - the ultimate in exterior durability and color retention
- “Cool” color pigments are specially designed to reflect infrared light, reducing heat gain to dwelling, and conform with ENERGY STAR® criteria
- Superior quality, two coat, 70% resin finish, applied at a 1 mil. thickness
- 40 year residential paint warranty
- 20 and 30 year commercial paint warranty: Contact your sales rep. for warranty specifications
- “Oil Canning” is an inherent characteristic of roof and wall products, and not a defect, which is not a cause for panel rejection.



PANEL ATTACHMENT



Fastener Notes:

- When possible, lap panels away from prevailing wind direction.
- Panel screws should be long enough to penetrate through the bottom of the plywood by 3/8".
- For dimensional lumber, panel screws should penetrate the lumber 1".
- All trim screws used for roof or wall applications should have EPDM sealing washers.
- Clean off working area each day to remove metal particles left from drilling fasteners. These particles, when exposed to moisture, will form rust between metal particles and the panel.