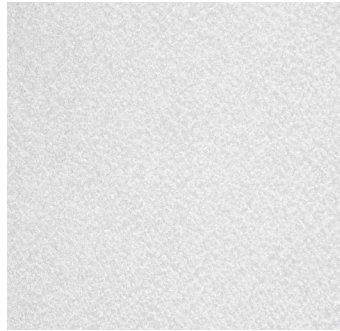
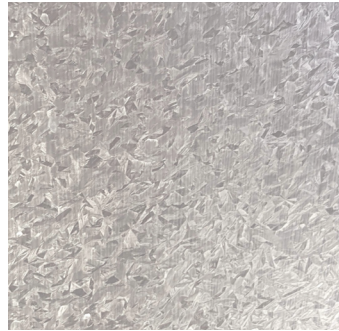




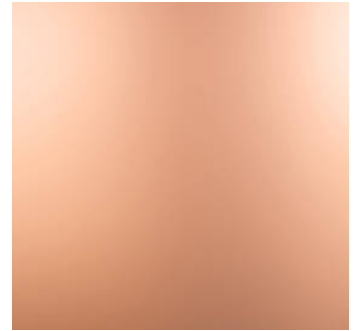
Vintage SRI-19



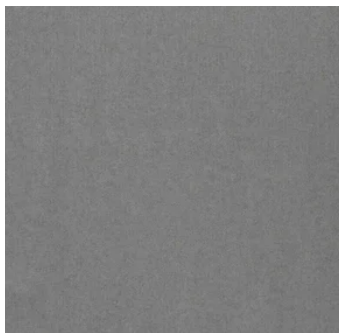
Zincalume/Galvalume SRI-65



Galvanized SRI-65



16 oz and 20 oz Copper
(*inquire*)



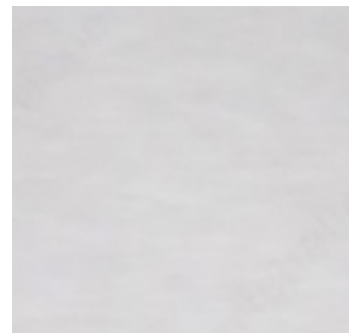
Bonderized



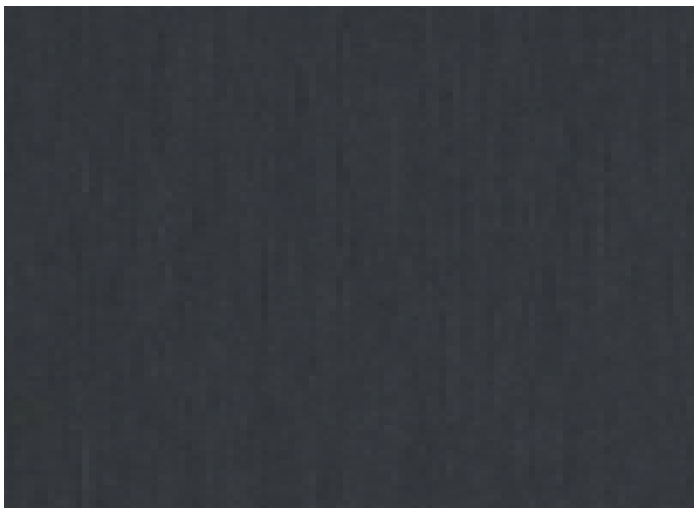
Rusteel Plus™ (A606 Corten)



Stainless Steel



Aluminum



eZinc Graphite®



eZinc Slate® SRI-18

Important Notes: Painted products are coated on an individual paint run basis. **As such, the customer is required to take 100% yield of the coil paint run in Flat Sheets, Coil or Panels. Prices VARY based on QUANTITY, coil width and gauge.** Due to width restrictions of the specialty coil - Not all Taylor Products are available in their original sizes or configurations. All information stated in the color guide is correct at the time of print and subject to change without notice. *Please contact your sale manger for details and restrictions.*

Cool Pigment Technology

Color Name	SRI	Master Widths	Stocking Item	24 Gauge Steel	22 Gauge Steel	20 Gauge Steel	.032 Alum	.040 Alum	.050 Alum	.063 Alum
Vintage	—	48"	X	X						
Zincalume/Galvalume	65	48"	X	X	X	X				
Galvanized	65	48"	X	X						
16oz and 20oz Copper	36	20", 36"	X	X 16 oz	x 20 oz					
Bonderized	—	48"	X	X						
Rusteel Plus (A606 Corten)	—	48"	X		X					
Stainless Steel	—	48"	special order	X	X					
Aluminum	—	48"	special order				X	X	X	X
eIZinc Graphite	—	1 meter	X	.7 mm	.8 mm	1 mm inquire				
eIZinc Slate	18	1 meter	X	.7 mm	.8 mm	1 mm inquire				

For our **entire** panel collection, panel options and additional information, visit www.taylormetal.com