



Black Ore Matte SRI-27



Titanium Grey SRI-32



Metallic Rust SRI-35



Rustic Ridge SRI-28



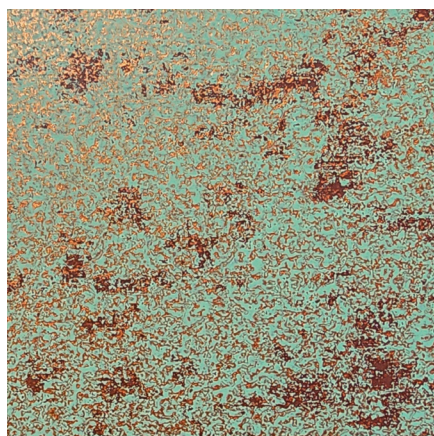
LuxOre Graphite



LuxOre Zinc



Midnight Hour SRI-32



Dark Patina Copper SRI-50



Rustic Rawhide SRI-32 **In Stock*

Important Notes: Painted products are coated on an individual paint run basis. **As such, the customer is required to take 100% yield of the coil paint run in Flat Sheets, Coil or Panels. Prices VARY based on QUANTITY, coil width and gauge.** Due to width restrictions of the specialty coil - Not all Taylor Products are available in their original sizes or configurations. All information stated in the color guide is correct at the time of print and subject to change without notice. *Please contact your sale manger for details and restrictions.*

Cool Pigment Technology

Note: Minimum quantities and longer lead times apply to all Rustic finishes

Color Name	SRI	Master Widths	Stocking Item	24 Gauge Steel	22 Gauge Steel	20 Gauge Steel	.032 Alum	.040 Alum	.050 Alum	.063 Alum
Black Ore Matte	27	24", 36"	special order	X	X	X	X	X	X	inquire
Titanium Grey	32	24", 36"	special order	X	X	X	X	X	X	inquire
Metallic Rust	35	24", 36"	special order	X	X	X	X	X	X	inquire
Rustic Ridge	28	24", 36"	special order	X	X	X	X	X	X	inquire
LuxOre Graphite	—	24", 36"	special order	X	X	X	X	X	X	inquire
LuxOre Zinc	—	24", 36"	special order	X	X	X	X	X	X	inquire
Midnight Hour	32	24", 36"	special order	X	X	X	X	X	X	inquire
Dark Patina Copper	50	24", 36"	special order	X	X	X	X	X	X	inquire
Rustic Rawhide	32	48"	X	X	inquire					inquire

For our **entire** panel collection, panel options and additional information, visit www.taylormetal.com