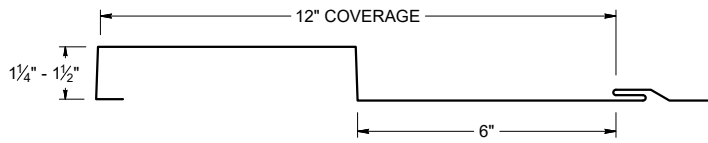




ICC  
EVALUATION  
SERVICE®

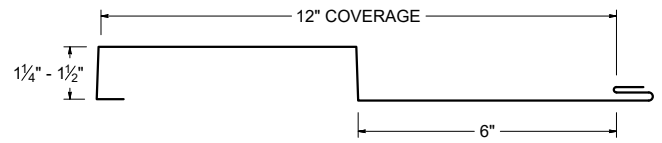
ICC-ES EVALUATION REPORT #5045 with CBC-CRC Supplement

#### SCREW FLANGE ATTACHMENT



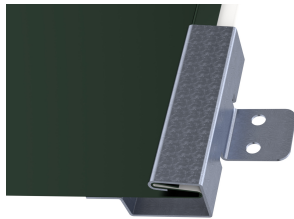
Screw Flange panels in this profile require additional material (drop/waste) and must be slit to a custom size. Inquire for custom pricing and availability.

#### CLIP ATTACHMENT

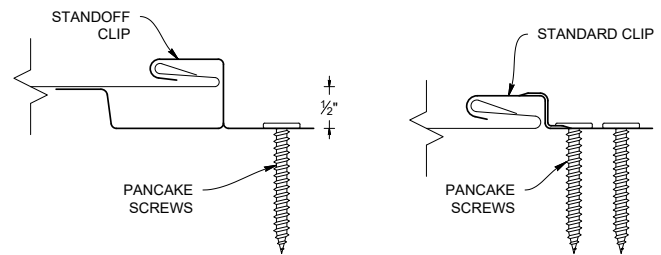
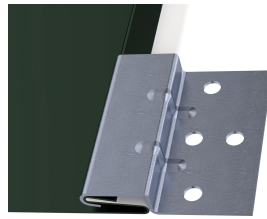


### PANEL ATTACHMENT CLIP

#### STANDOFF CLIP




#### STANDARD CLIP



### KEY FEATURES

- 12" panel coverage
- 24 and 22 Tru-Gauge™ and .032" and .040 Aluminum. Screw Flange and Clip attachment available
- Custom 20 & 18 Tru-Gauge™ and .050" and .063" Aluminum. These require the use of high performance clip. (please inquire)
- 2' to 20'10" panel lengths
- Custom profiles available
- Vertical or Horizontal Wall Application
- Acceptable for use as a soffit panel
- Interchangeable panel widths and configurations
- Perforated options available (please inquire)

### TESTING

-  ICC-ESR #5045 with CBC-CRC Supplement
- ASTM E331 - Water infiltration (wall)
- ASTM E283 - Air infiltration (wall)
- ASTM E1592 - Structural uniform static air pressure
- ASTM E1680 - Air infiltration (roof)
- ASTM E1646 - Water infiltration (roof)
- ASTM A653/A924 - G90 Galvanized
- ASTM A792 - Zincalume/Galvalume AZ-50/55
- ASTM B209 - Aluminum Substrate

### WEIGHT CHART (Values based on 1-1/4" panels, inquire for 1-1/2")

C-7	TYPE	24 GA STEEL	22 GA STEEL	.032 ALUM	.040 ALUM
THICKNESS		0.0236"	0.0285"	0.032"	0.040"
WEIGHT/LINFT	CLIP ATTACH	1.508 LBS	1.984 LBS	0.715 LBS	0.973 LBS
WEIGHT/LSQFT	CLIP ATTACH	1.508 LBS	1.984 LBS	0.715 LBS	0.973 LBS
WEIGHT/LINFT	SCREW FLANGE	1.400 LBS	1.620 LBS	0.662 LBS	0.794 LBS
WEIGHT/LSQFT	SCREW FLANGE	1.400 LBS	1.620 LBS	0.622 LBS	0.794 LBS

ASTM E 1680/E283 Air Penetration	ASTM E 1646/E331 Water Penetration
12 PSF<0.01 CFM/ft²-PASS	20.5 PSF - Pass
Intertek Test Result L5460.01-901-44 R1	
Intertek Test Result L5461.01-901-44 R1	
Intertek Test Result M7269.02-301-44 R1	
STRUCTURAL TESTING ASTM E 1592	
Intertek Test Result 1" Panels Q2599.13-301-44 R0	
Intertek Test Result 1.25" Panels M7269.02-301-44 R0	

## NEGATIVE LOAD CHART WITH CLIP ATTACHMENT

### 1.25" Panel Depth

				SECTION PROPERTIES						ALLOWABLE UNIFORM LOADS, psf For various clip spacings (i.e. span values)								
Width, in.	Gauge	Yield ksi	Weight psf	Top in Compression			Bottom in Compression			Negative Load								
				$I_{xx}$ in <sup>4</sup> /ft.	$I_{xx}$ (eff) in <sup>4</sup> /ft.	$S_{xx}$ in <sup>3</sup> /ft.	$I_{xx}$ in <sup>4</sup> /ft.	$I_{xx}$ (eff) in <sup>4</sup> /ft.	$S_{xx}$ in <sup>3</sup> /ft.	1'	1.5'	2'	2.5'	3'	3.5'	4'	4.5'	5'
12	24	50	1.34	0.0316	0.0345	0.0407	0.0415	0.0386	0.0626	205.0	186.9	168.8	150.6	132.5	114.4	96.3	78.1	60.0
12	22	50	1.58	0.0402	0.0434	0.0526	0.0513	0.0481	0.0792	190.0	173.1	156.3	139.4	122.5	105.6	88.8	71.9	55.0
12	20	33	1.93	0.0591	0.0624	0.0814	0.0704	0.0671	0.1151	190.0	173.1	156.3	139.4	122.5	105.6	88.8	71.9	55.0
12	18	33	2.51	0.0860	0.0892	0.1237	0.0970	0.0938	0.1657	190.0	173.1	156.3	139.4	122.5	105.6	88.8	71.9	55.0

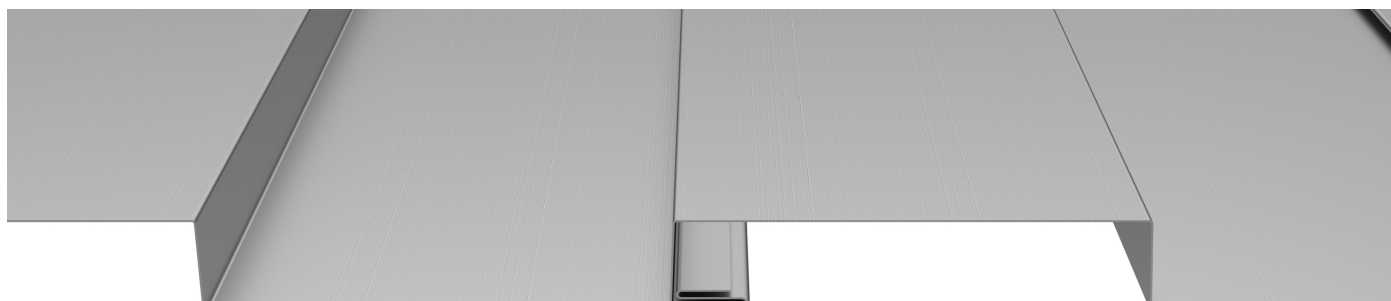
- Theoretical section properties for still panels have been calculated per AISI S100 Specifications for Design of Cold-Formed Steel Structural Members. Intertek 1.25" Panels M7269.02-301-44 R0
- Charted Load/Span values are based on ASTM E1592-05, divided by a 2.00 Factor-of-Safety.
- Minimum recommended substrate (structure) recommendations:
  - Open-Framing (i.e. purlins)-16ga (design thickness 0.0566")
  - Plywood/OSB-15/32" or thicker is recommended to assure an effective degree of fastener thread engagement.
  - METAL DECK - 22ga (design thickness 0.0283")

## POSITIVE LOAD CHART WITH CLIP ATTACHMENT

				SECTION PROPERTIES						ALLOWABLE UNIFORM LOADS, psf For various clip spacings (i.e. span values)									
Width, in.	Gauge	Yield ksi	Weight psf	Top in Compression			Bottom in Compression			Positive Load									
				$I_{xx}$ in <sup>4</sup> /ft.	$I_{xx}$ (eff) in <sup>4</sup> /ft.	$S_{xx}$ in <sup>3</sup> /ft.	$I_{xx}$ in <sup>4</sup> /ft.	$I_{xx}$ (eff) in <sup>4</sup> /ft.	$S_{xx}$ in <sup>3</sup> /ft.	1'	2'	3'	4'	5'	6'	7'	8'	9'	10'
12	24	50	1.34	0.0316	0.0345	0.0407	0.0415	0.0386	0.0626	270.0	135.0	90.0	63.6	40.7	28.3	20.8	15.9	12.6	10.2
12	22	50	1.58	0.0402	0.0434	0.0526	0.0513	0.0481	0.0792	383.6	191.82	127.88	82.2	52.6	36.5	26.84	20.6	16.2	13.2
12	20	33	1.93	0.0591	0.0624	0.0814	0.0704	0.0671	0.1151	385.5	192.73	128.48	83.9	53.7	37.3	27.41	21.0	16.6	13.4
12	18	33	2.51	0.0860	0.0892	0.1237	0.0970	0.0938	0.1657	664.6	332.3	221.5	127.57	81.64	56.7	41.65	31.89	25.2	20.4

- Theoretical section properties for Steel panel have been calculated per 2020 AISI S100 North America Specifications for the Design of Cold-Formed Steel Structural Member.
- Allowable loads for Steel panels are calculated in accordance with 2020 AISI S100 specifications considering bending, shear, combined bending and shear and deflection. Allowable load considers a 3 or more equal span condition.
- When panels are installed over solid or closely fitted sheathing, the capacity is limited to the capacity of the underlying sheathing.

## PANEL ATTACHMENT



### Fastener Notes:

- When possible, lap panels away from prevailing wind direction.
- 15/32" OSB: #10 Burr Buster fasteners.
- 15/32" Plywood: #10 GP Fastener. Screws should be long enough to penetrate through the bottom of the plywood by 3/8".
- Dimensional lumber: #10 GP. Screws should penetrate the lumber 1".
- 16ga (or less) Steel furring: #10 or #12 Fastener with DP-1
- All trim screws used for roof or wall applications should have EPDM sealing washers.

## NEGATIVE LOAD CHARTS WITH SCREW FLANGE

### 1" Panel Depth

				SECTION PROPERTIES						ALLOWABLE UNIFORM LOADS, psf For various clip spacings (i.e. span values)						
Width, in.	Gauge	Yield ksi	Weight psf	Top in Compression			Bottom in Compression			Negative Load						
				$I_{xx}$ in <sup>4</sup> /ft.	$I_{xx}$ (eff) in <sup>4</sup> /ft.	$S_{xx}$ in <sup>3</sup> /ft.	$I_{xx}$ in <sup>4</sup> /ft.	$I_{xx}$ (eff) in <sup>4</sup> /ft.	$S_{xx}$ in <sup>3</sup> /ft.	1'	1.5'	2'	2.5'	3'	3.5'	4'
12	24	50	1.39	0.0516	0.0573	0.0523	0.0712	0.0655	0.0875	212.5	186.3	160.0	133.8	107.5	81.3	55.0
12	22	50	1.65	0.0657	0.0722	0.0675	0.0882	0.0817	0.1110	187.5	167.9	148.3	128.8	109.2	89.6	70.0
12	20	33	2.01	0.0876	0.0952	0.0921	0.1137	0.1060	0.1472	187.5	167.9	148.3	128.8	109.2	89.6	70.0
12	18	33	2.60	0.1280	0.1367	0.1398	0.1580	0.1493	0.2143	187.5	167.9	148.3	128.8	109.2	89.6	70.0
12	0.032"	19	0.52	0.1720	0.1720	0.2421	0.1720	0.1720	0.3205	137.5	124.6	111.7	98.8	85.8	72.9	60.0
12	0.040"	19	1.14	0.2130	0.2130	0.3954	0.2130	0.2130	0.3440	137.5	124.6	111.7	98.8	85.8	72.9	60.0

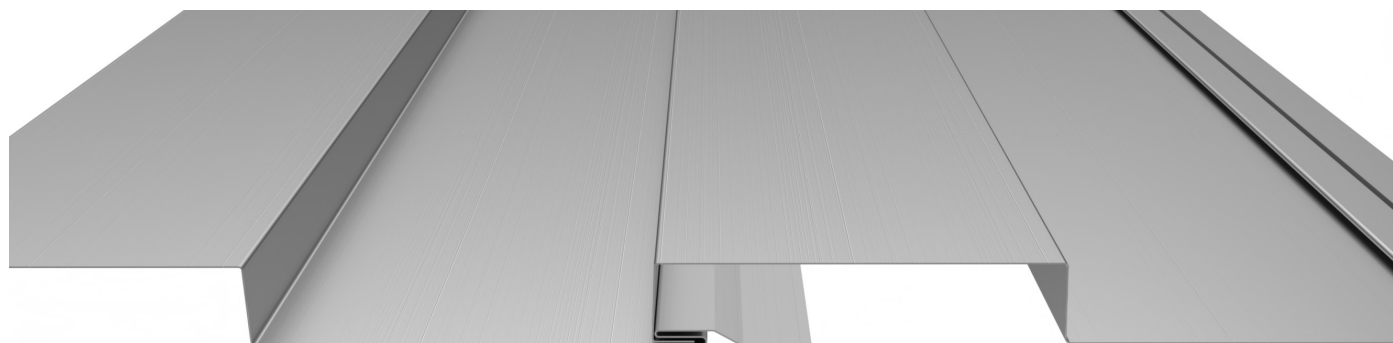
- Theoretical section properties for still panels have been calculated per AISI S100 Specifications for Design of Cold-Formed Steel Structural Members. Intertek 1" Panels Q2599.13-301-44 R0
- Charted Load/Span values are based on ASTM E1592-05, divided by a 2.00 Factor-of-Safety.
- Minimum recommended substrate (structure) recommendations:
  - Open-Framing (i.e. purlins)-16ga (design thickness -0.0566")
  - Plywood/OSB-15/32" or thicker is recommended to assure an effective degree of fastener thread engagement.
  - METAL DECK - 22ga (design thickness= 0.283")

## POSITIVE LOAD CHARTS WITH SCREW FLANGE

				SECTION PROPERTIES						ALLOWABLE UNIFORM LOADS, psf For various clip spacings (i.e. span values)									
Width, in.	Gauge	Yield ksi	Weight psf	Top in Compression			Bottom in Compression			Positive Load									
				$I_{xx}$ in <sup>4</sup> /ft.	$I_{xx}$ (eff) in <sup>4</sup> /ft.	$S_{xx}$ in <sup>3</sup> /ft.	$I_{xx}$ in <sup>4</sup> /ft.	$I_{xx}$ (eff) in <sup>4</sup> /ft.	$S_{xx}$ in <sup>3</sup> /ft.	1'	2'	3'	4'	5'	6'	7'	8'	9'	10'
12	24	50	1.39	0.0516	0.0573	0.0523	0.0712	0.0655	0.0875	354.6	177.3	118.2	81.7	52.3	36.3	26.7	20.4	16.1	13.1
12	22	50	1.65	0.0657	0.0722	0.0675	0.0882	0.0817	0.1110	488.2	244.1	162.7	105.5	67.5	46.88	34.44	26.37	20.8	16.9
12	20	33	2.01	0.0876	0.0952	0.0921	0.1137	0.1060	0.1472	470.9	235.5	157.0	95.9	61.4	42.6	31.33	24.0	19.0	15.4
12	18	33	2.60	0.1280	0.1367	0.1398	0.1580	0.1493	0.2143	675.5	337.7	225.2	145.6	93.2	64.72	47.55	36.41	28.8	23.3
12	0.032"	19	0.52	0.1720	0.1720	0.2421	0.1720	0.1720	0.3205	54.6	27.3	18.2	13.6	10.9					
12	0.040"	19	1.14	0.2130	0.2130	0.3954	0.2130	0.2130	0.3440	86.4	43.2	28.8	21.6	17.3	14.4	11.35			

- Theoretical section properties for Steel panel have been calculated per 2020 AISI S100 North America Specifications for the Design of Cold-Formed Steel Structural Member.
- Allowable loads for Steel panels are calculated in accordance with 2020 AISI S100 specifications considering bending, shear, combined bending and shear and deflection. Allowable load considers a 3 or more equal span condition.
- When panels are installed over solid or closely fitted sheathing, the capacity is limited to the capacity of the underlying sheathing.

## PANEL ATTACHMENT



### Fastener Notes:

- When possible, lap panels away from prevailing wind direction.
- 15/32" OSB: #10 Burr Buster fasteners.
- 15/32" Plywood: #10 GP Fastener. Screws should be long enough to penetrate through the bottom of the plywood by 3/8".
- Dimensional lumber: #10 GP. Screws should penetrate the lumber 1".
- 16ga (or less) Steel furring: #10 or #12 Fastener with DP-1
- All trim screws used for roof or wall applications should have EPDM sealing washers.

Rev. Date 06-24