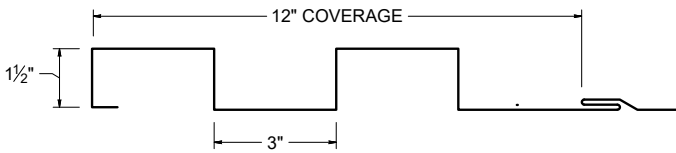




ICC
EVALUATION
SERVICE®

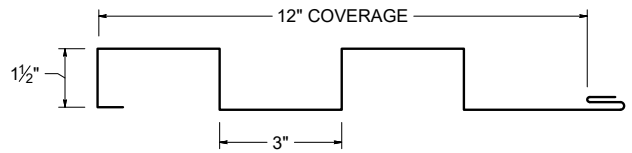
ICC-ES EVALUATION REPORT #5045 with CBC-CRC Supplement

SCREW FLANGE ATTACHMENT



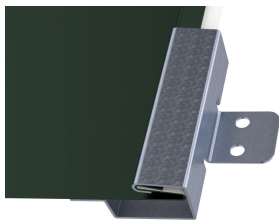
Screw Flange panels in this profile require additional material (drop/waste) and must be slit to a custom size. Inquire for custom pricing and availability.

CLIP ATTACHMENT

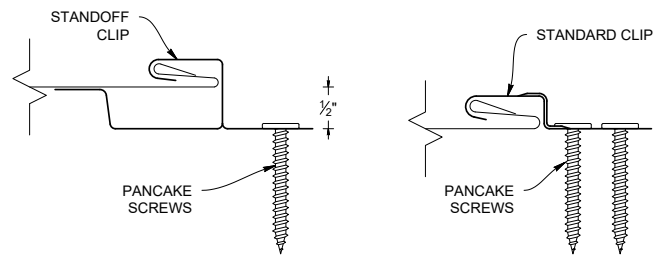
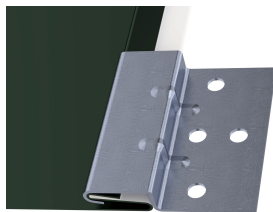


PANEL ATTACHMENT CLIP

STANDOFF CLIP




STANDARD CLIP



KEY FEATURES

- 12" panel coverage
- 24 and 22 Tru-Gauge™ and .032" and .040" Aluminum. Screw Flange and Clip attachment available
- Custom 20 & 18 Tru-Gauge™ and .050" and .063" Aluminum. These require the use of high performance clip. (please inquire)
- 2' to 20'10" panel lengths
- Custom profiles available
- Vertical or Horizontal Wall Application
- Acceptable for use as a soffit panel
- Interchangeable panel widths and configurations
- Perforated options available (please inquire)

TESTING

-  ICC-ESR #5045 with CBC-CRC Supplement
- ASTM E331 - Water infiltration (wall)
- ASTM E283 - Air infiltration (wall)
- ASTM E1592 - Structural uniform static air pressure
- ASTM E1680 - Air infiltration (roof)
- ASTM E1646 - Water infiltration (roof)
- ASTM A653/A924 - G90 Galvanized
- ASTM A792 - Zincalume/Galvalume AZ-50/55
- ASTM B209 - Aluminum Substrate

WEIGHT CHART

C8-A	TYPE	24 GA STEEL	22 GA STEEL	.032 ALUM	.040 ALUM
THICKNESS		0.0236"	0.0285"	0.032"	0.040"
WEIGHT/LINFT	CLIP ATTACH	1.685 LBS	1.971 LBS	0.798 LBS	0.997 LBS
WEIGHT/LSQFT	CLIP ATTACH	1.685 LBS	1.971 LBS	0.798 LBS	0.997 LBS
WEIGHT/LINFT	SCREW FLANGE	1.828 LBS	2.328 LBS	0.866 LBS	1.142 LBS
WEIGHT/LSQFT	SCREW FLANGE	1.828 LBS	2.328 LBS	0.866 LBS	1.142 LBS

ASTM E 1680/E283 Air Penetration	ASTM E 1646/E331 Water Penetration
12 PSF<0.01 CFM/ft²-PASS	20.5 PSF - Pass
Intertek Test Result L5460.01-901-44 R1	
Intertek Test Result L5461.01-901-44 R1	
STRUCTURAL TESTING ASTM E 1592	
Intertek Test Result N3050.16-301-44 R0	

NEGATIVE LOAD CHART WITH CLIP ATTACHMENT

SECTION PROPERTIES				ALLOWABLE UNIFORM LOADS, psf For various clip spacings (i.e. span values)															
				Top in Compression			Bottom in Compression			Negative Load									
				Width, in.	Gauge	Yield ksi	Weight psf	I_{xx} in ⁴ /ft.	I_{xx} (eff) in ⁴ /ft.	S_{xx} in ³ /ft.	I_{xx} in ⁴ /ft.	I_{xx} (eff) in ⁴ /ft.	S_{xx} in ³ /ft.	1'	1.5'	2'	2.5'	3'	3.5'
12	24	50	1.60	0.1159	0.1169	0.1182	0.1193	0.1183	0.1381	162.5	150.0	137.5	125.0	112.5	100.0	87.5	75.0	62.5	50.0
12	22	50	1.87	0.1467	0.1478	0.1547	0.1507	0.1495	0.1827	150.0	137.5	125.0	112.5	100.0	87.5	75.0	62.5	50.0	50.0
12	20	33	2.28	0.2052	0.2059	0.2297	0.2079	0.2071	0.2729	150.0	137.5	125.0	112.5	100.0	87.5	75.0	62.5	50.0	50.0
12	18	33	2.96	0.2880	0.2877	0.3374	0.2870	0.2873	0.3896	150.0	137.5	125.0	112.5	100.0	87.5	75.0	62.5	50.0	50.0

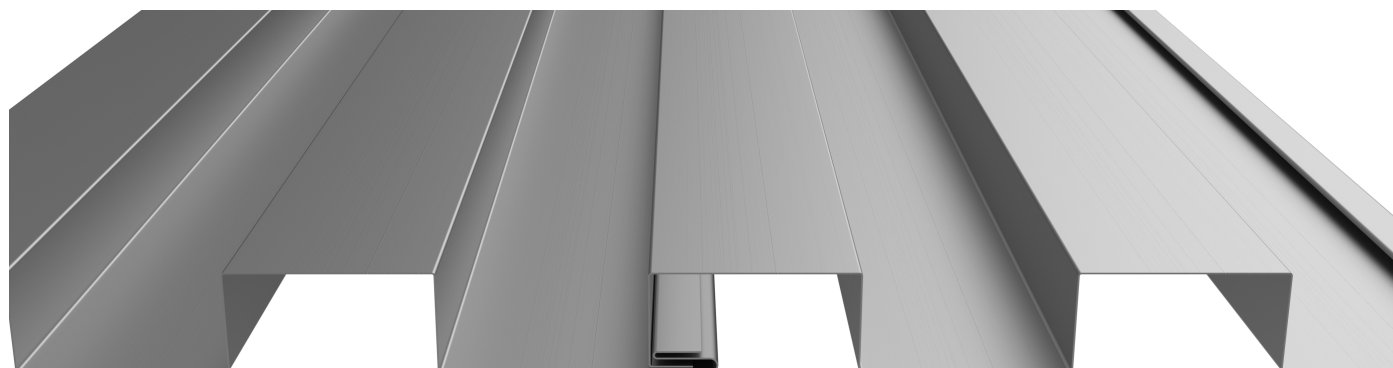
- Theoretical section properties for still panels have been calculated per AISI S100 Specifications for Design of Cold-Formed Steel Structural Members. Intertek L3671.01-301-44 RO
- Charted Load/Span values are based on ASTM E1592-05, divided by a 2.00 Factor-of-Safety.
- Minimum recommended substrate (structure) recommendations:
 - Open-Framing (i.e. purlins)-16ga (design thickness 0.0566")
 - Plywood/OSB-15/32" or thicker is recommended to assure an effective degree of fastener thread engagement.
 - METAL DECK - 22ga (design thickness 0.0283")

POSITIVE LOAD CHART WITH CLIP ATTACHMENT

SECTION PROPERTIES				ALLOWABLE UNIFORM LOADS, psf For various clip spacings (i.e. span values)																
				Top in Compression			Bottom in Compression			Positive Load										
				Width, in.	Gauge	Yield ksi	Weight psf	I_{xx} in ⁴ /ft.	I_{xx} (eff) in ⁴ /ft.	S_{xx} in ³ /ft.	I_{xx} in ⁴ /ft.	I_{xx} (eff) in ⁴ /ft.	S_{xx} in ³ /ft.	1'	2'	3'	4'	5'	6'	7'
12	24	50	1.60	0.1159	0.1169	0.1182	0.1193	0.1183	0.1381	1060.0	530.0	327.8	184.4	118.0	81.9	60.2	46.1	36.4	29.5	29.5
12	22	50	1.87	0.1467	0.1478	0.1547	0.1507	0.1495	0.1827	1136.4	568.2	378.8	241.7	154.7	107.4	78.93	60.4	47.8	38.7	38.7
12	20	33	2.28	0.2052	0.2059	0.2297	0.2079	0.2071	0.2729	1145.5	572.7	381.8	239.3	153.1	106.3	78.13	59.8	47.3	38.3	38.3
12	18	33	2.96	0.2880	0.2877	0.3374	0.2870	0.2873	0.3896	1975.5	987.7	624.8	351.5	224.9	156.2	114.8	87.86	69.4	56.2	56.2
12	0.032"	19	0.64	0.2390	0.2390	0.3014	0.2390	0.2390	0.3716	149.1	74.6	49.7	37.3	29.8	24.5	18.0	13.8	10.9	10.9	10.9
12	0.040"	19	1.23	0.2950	0.2950	0.3712	0.2950	0.2950	0.4572	232.7	116.4	77.6	58.2	46.6	37.8	27.8	21.3	16.8	13.6	13.6

- Theoretical section properties for Steel panel have been calculated per 2020 AISI S100 North America Specifications for the Design of Cold-Formed Steel Structural Member.
- Allowable loads for Steel panels are calculated in accordance with 2020 AISI S100 specifications considering bending, shear, combined bending and shear and deflection. Allowable load considers a 3 or more equal span condition.
- When panels are installed over solid or closely fitted sheathing, the capacity is limited to the capacity of the underlying sheathing.

PANEL ATTACHMENT



Fastener Notes:

- When possible, lap panels away from prevailing wind direction.
- 15/32" OSB: #10 Burr Buster fasteners.
- 15/32" Plywood: #10 GP Fastener. Screws should be long enough to penetrate through the bottom of the plywood by 3/8".
- Dimensional lumber: #10 GP. Screws should penetrate the lumber 1".
- 16ga (or less) Steel furring: #10 or #12 Fastener with DP-1
- All trim screws used for roof or wall applications should have EPDM sealing washers.