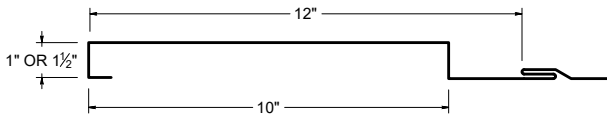


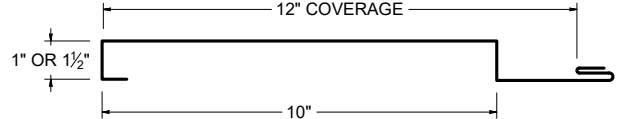
**ES** ICC EVALUATION SERVICE® **ICC-ES EVALUATION REPORT #5045 with CBC-CRC Supplement**

**SCREW FLANGE ATTACHMENT**



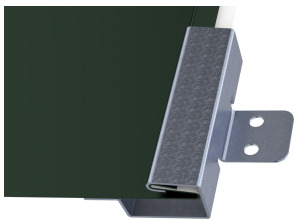
Screw Flange panels in this profile require additional material (drop/waste) and must be slit to a custom size. Inquire for custom pricing and availability.

**CLIP ATTACHMENT**

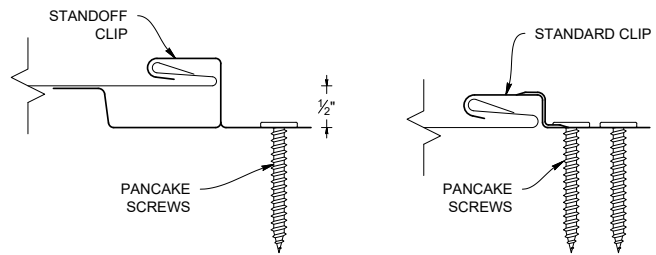
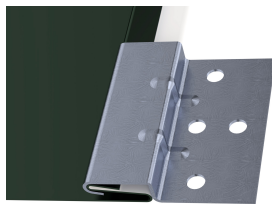


**PANEL ATTACHMENT CLIP**

**STANDOFF CLIP**



**STANDARD CLIP**



**KEY FEATURES**

- 12" panel coverage
- 24 and 22 Tru-Gauge™ and .032" and .040" Aluminum. Screw Flange and Clip attachment available
- Custom 20 & 18 Tru-Gauge™ and .050" and .063" Aluminum. These require the use of high performance clip. (please inquire)
- Seamless runs, fewer runs and less labor
- 1" or 1-1/2" deep panel
- 2' to 20'10" panel lengths
- Custom profiles available
- Vertical or Horizontal Wall Application
- Acceptable for use as a soffit panel
- Interchangeable panel widths and configurations
- Perforated options available (please inquire)

**TESTING**

- **ES** ICC EVALUATION SERVICE® ICC-ESR #5045 with CBC-CRC Supplement
- ASTM E331 - Water infiltration (wall)
- ASTM E283 - Air infiltration (wall)
- ASTM E1592 - Negative structural uniform static air pressure
- ASTM E330 - Positive structural uniform static air pressure
- ASTM E1680 - Air infiltration (roof)
- ASTM E1646 - Water infiltration (roof)
- ASTM A653/A924 - G90 Galvanized
- ASTM A792 - Zincalume/Galvalume AZ-50/55
- ASTM B209 - Aluminum Substrate

**WEIGHT CHART (Values based on 1-1/2" panels, inquire for 1")**

NX-8	TYPE	24 GA STEEL	22 GA STEEL	20 GA STEEL	18 GA STEEL	.063" ALUM	.050" ALUM	.032" ALUM
THICKNESS		0.0236"	0.0285"	0.0356"	0.0466"	0.063"	0.050"	0.032"
WEIGHT/LINFT	CLIP ATTACH	1.444 LBS	1.673 LBS	2.090 LBS	2.736 LBS	1.293 LBS	1.026 LBS	0.684 LBS
WEIGHT/SQFT	CLIP ATTACH	1.444 LBS	1.673 LBS	2.090 LBS	2.736 LBS	1.293 LBS	1.026 LBS	0.684 LBS
WEIGHT/LINFT	SCREW FLANGE	1.589 LBS	2.040 LBS	2.549 LBS	3.336 LBS	1.576 LBS	1.251 LBS	0.753 LBS
WEIGHT/SQFT	SCREW FLANGE	1.589 LBS	2.040 LBS	2.549 LBS	3.336 LBS	1.576 LBS	1.251 LBS	0.753 LBS

ASTM E 1680/E283 Air Penetration	ASTM E 1646/E331 Water Penetration
12 PSF<0.01 CFM/ft²-PASS	20.5 PSF - Pass
Intertek Test Result L5460.01-901-44 R1	
Intertek Test Result L5461.01-901-44 R1	
STRUCTURAL TESTING ASTM E1592 AND E330	
Intertek Test Result M7269.03-301-44 R0	

## NEGATIVE LOAD CHART WITH CLIP ATTACHMENT

Width, in.    Gauge    Yield ksi    Weight psf				SECTION PROPERTIES						ALLOWABLE UNIFORM LOADS, psf For various clip spacings (i.e. span values)						
				Top in Compression			Bottom in Compression			Negative Load						
				$I_{xx}$ in <sup>4</sup> /ft.	$I_{xx}$ (eff) in <sup>4</sup> /ft.	$S_{xx}$ in <sup>3</sup> /ft	$I_{xx}$ in <sup>4</sup> /ft.	$I_{xx}$ (eff) in <sup>4</sup> /ft.	$S_{xx}$ in <sup>3</sup> /ft	1'	1.5'	2'	2.5'	3'	3.5'	4'
12	24	50	1.30	0.0255	0.0324	0.0367	0.0495	0.0425	0.0658	200.0	175.8	151.6	127.5	103.3	79.1	55.0
12	22	50	1.53	0.0325	0.0409	0.0479	0.0616	0.0531	0.0832	212.5	185.4	158.3	131.2	104.1	77.0	50.0
12	20	33	1.87	0.0480	0.0588	0.0762	0.0851	0.0743	0.1199	212.5	185.4	158.3	131.2	104.1	77.0	50.0
12	18	33	2.43	0.0700	0.0839	0.1183	0.1180	0.1041	0.1713	212.5	185.4	158.3	131.2	104.1	77.0	50.0
12	0.032"	19	0.49	0.0940	0.0940	0.1413	0.0940	0.0940	0.2825	175.0	157.5	140.0	122.5	105.0	87.5	70.0
12	0.040"	19	0.59	0.1160	0.1160	0.1741	0.1160	0.1160	0.3464	175.0	157.5	140.0	122.5	105.0	87.5	70.0

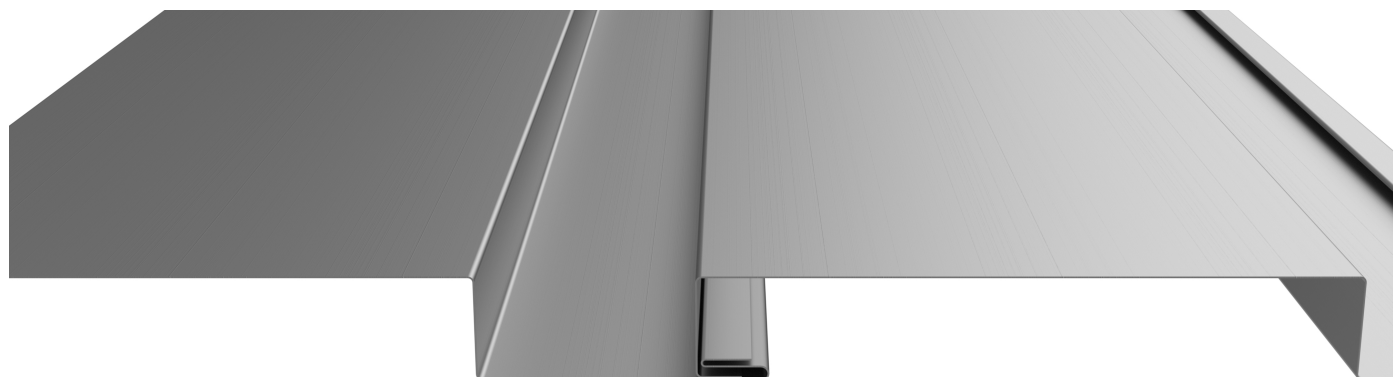
- Theoretical section properties for still panels have been calculated per AISI S100 Specifications for Design of Cold-Formed Steel Structural Members. Intertek M7269.03-301-44 R0
- Charted Load/Span values are based on ASTM E1592-05, divided by a 2.00 Factor-of-Safety.
- Minimum recommended substrate (structure) recommendations:
  - Open-Framing (i.e. purlins)-16ga (design thickness 0.0566")
  - Plywood/OSB-15/32" or thicker is recommended to assure an effective degree of fastener thread engagement.
  - METAL DECK - 22ga (design thickness 0.0283")

## POSITIVE LOAD CHART WITH CLIP ATTACHMENT

Width, in.    Gauge    Yield ksi    Weight psf				SECTION PROPERTIES						ALLOWABLE UNIFORM LOADS, psf For various clip spacings (i.e. span values)									
				Top in Compression			Bottom in Compression			Positive Load									
				$I_{xx}$ in <sup>4</sup> /ft.	$I_{xx}$ (eff) in <sup>4</sup> /ft.	$S_{xx}$ in <sup>3</sup> /ft	$I_{xx}$ in <sup>4</sup> /ft.	$I_{xx}$ (eff) in <sup>4</sup> /ft.	$S_{xx}$ in <sup>3</sup> /ft	1'	2'	3'	4'	5'	6'	7'	8'	9'	10'
12	24	50	1.40	0.0255	0.0324	0.0367	0.0495	0.0425	0.0658	358.2	179.1	101.9	57.3	36.7	25.5	18.7	14.3	11.3	
12	22	50	1.65	0.0325	0.0409	0.0479	0.0616	0.0531	0.0832	492.7	246.4	133.1	74.84	47.9	33.26	24.44	18.71	14.8	12.0
12	20	33	1.95	0.0480	0.0588	0.0762	0.0851	0.0743	0.1199	474.6	237.3	141.1	79.4	50.8	35.3	25.92	19.8	15.7	12.7
12	18	33	2.52	0.0700	0.0839	0.1183	0.1180	0.1041	0.1713	779.1	389.6	219.1	123.2	78.87	54.77	40.24	30.81	24.3	19.7
12	0.032"	19	0.49	0.0940	0.0940	0.1413	0.0940	0.0940	0.2825	55.5	27.7	18.5	13.9	11.1					
12	0.040"	19	0.59	0.1160	0.1160	0.1741	0.1160	0.1160	0.3464	86.4	43.2	28.8	21.6	17.3	14.4	12.34	10.8		

- Theoretical section properties for Steel panel have been calculated per 2020 AISI S100 North America Specifications for the Design of Cold-Formed Steel Structural Member.
- Allowable loads for Steel panels are calculated in accordance with 2020 AISI S100 specifications considering bending, shear, combined bending and shear and deflection. Allowable load considers a 3 or more equal span condition.
- When panels are installed over solid or closely fitted sheathing, the capacity is limited to the capacity of the underlying sheathing.

## PANEL ATTACHMENT



### Fastener Notes:

- When possible, lap panels away from prevailing wind direction.
- 15/32" OSB: #10 Burr Buster fasteners.
- 15/32" Plywood: #10 GP Fastener. Screws should be long enough to penetrate through the bottom of the plywood by 3/8".
- Dimensional lumber: #10 GP. Screws should penetrate the lumber 1".
- 16ga (or less) Steel furring: #10 or #12 Fastener with DP-1
- All trim screws used for roof or wall applications should have EPDM sealing washers.