



**TAYLOR**  
**METAL PRODUCTS**

SALEM OR | AUBURN WA | SPOKANE WA | RIVERSIDE CA | SACRAMENTO CA

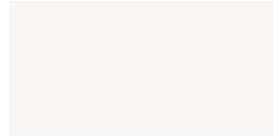


# **Metal Roofing & Siding** **Finish Options - *NORTHWEST REGION***

*Standard Kynar, Metallic Kynar, Premium Finish & Weathering Material*

# Standard Kynar 500® PVDF Resin

40-Year Residential/20 and 30 Year Commercial Manufacturer's Limited Warranty



Glacier White SRI-85



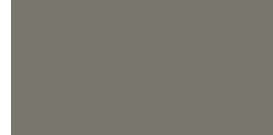
Sierra Tan SRI-60



Parchment SRI-58



Sterling Grey SRI-44



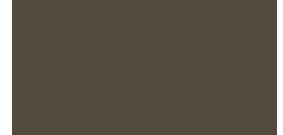
Zinc Grey SRI-39



Charcoal Grey SRI-25



Saddle Tan SRI-37



Medium Bronze SRI-36



Tahoe Blue SRI-31



Pacific Blue SRI-26



Hemlock Green SRI-36



Forest Green SRI-24



Graphite Black SRI-26



Dark Bronze SRI-22



Musket SRI-31



Pine Green SRI-25



Terra Cotta SRI-43



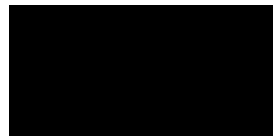
Tile Red SRI-43



Colonial Red SRI-37



Retro Red SRI-42



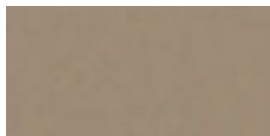
Matte Black SRI-23

# Premium Metallic Kynar 500® PVDF Resin

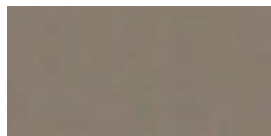
Premium Pricing Applies



Metallic Silver SRI-60



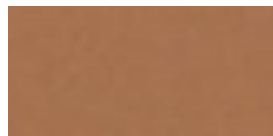
Champagne SRI-48



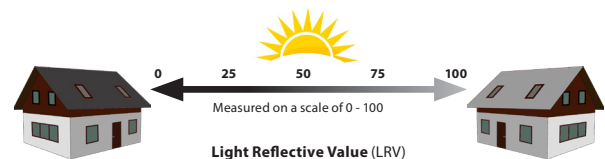
Antique Patina SRI-40



Weathered Zinc SRI-39



Copper Penny SRI-50



**Light Reflective Value (LRV)**  
Measures how much visible light a color reflects and how much it absorbs. The **higher** the LRV, the **most reflective** it will be.



**Solar Reflective Index (SRI)**  
Measures the amount of **heat reflected** from painted metal roof. The higher the SRI value, the cooler the metal will be, helping cut down the **energy costs** to keep your **home cool**.

SRI values listed above are in accordance with ASTM E1980 and are based on actual testing (CRRC) Cool Roof Rating Council SRI values (CA Title 24, ENERGY STAR®) are based on the grouping of colors (color families). CRRC SRI values will differ, as each color is not tested in the color family option. Coatings are low gloss 10-15% sheen.

In partnership with:





## Premium Finish

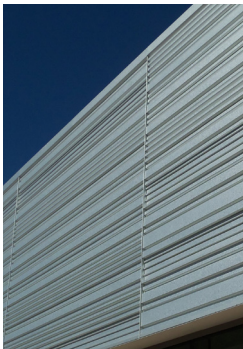
*Premium Pricing Applies*



Vintage® SRI-19

Vintage® is an innovative coating process over a G-90 metallic-coated steel surface. The process creates shade variations from light to dark, the lighter shade exhibiting a grey tone while the darker shade exhibits a bronze or brown tone. The dynamic, pre-aged appearance makes this a beautiful and durable product choice that is also graffiti resistant. Vintage® comes with a 20 year warranty. Warranty can vary by environment, see TMP website for more information.

NOTE: Due to the coating process, Vintage® has a color range. Color can vary from batch-to-batch and have directional variations. Due to color ranges, color matching of this product is not available.



## Weathering Materials

*These materials change appearance overtime*

Real Copper



16 oz. and 20 oz. Copper  
*(please inquire)*

Zincalume® Plus AZ-55

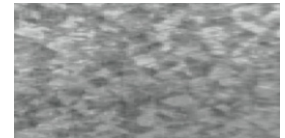


Zincalume® Plus SRI-65

Zincalume® Plus AZ-55 is a 55% aluminum, 45% zinc metallic coating over steel. *No finish warranty – 25 yr. perforation warranty.*

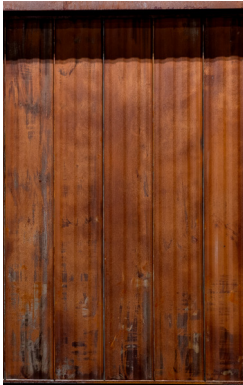
Due to batch differences, color or spangle matching of this product is not available.

Galvanized G-90



Galvanized G-90 SRI-65

*Metallic coating over steel.  
No finish warranty  
No perforation warranty*



Rusteel Plus™ Finish

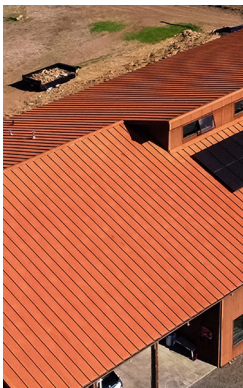


Rusteel Plus™ (A606)  
*general appearance prior to  
being exposed to the weather*

Rusteel Plus™ is an ideal design for a historic, weathered look. Rusteel Plus™ is best suited for dryer, less humid environments. Rusteel Plus™ has no metallic coating and offers no warranty. The designer should be aware of rust runoff on decks and concrete without gutter protection or separation. Rusteel Plus™ meets ASTM A606-96 Type A. Type 4 has improved corrosion resistance when compared to carbon steel.



Rusteel Plus™ (A606)  
*potential look after weather exposure*



These printed chips provide a close representation of the colors. Metal Samples are available upon request. Custom colors available. "Oil Canning" is an inherent characteristic of roof and wall products, and not a defect, which is not a cause for panel rejection.

**"Quality Products, Exceptional Service"**

**Kynar 500® PVDF Resin Coatings**

\*Please inquire for availability and pricing

12" Easy-Lock 11-3/4" Premier-Lock 150 13" Clip-Lock 100 11-1/2" Clip-Lock 150 13" MS100 12" MS150 12" Board & Batten 12" T-Panel Narrow Batten 12" SmoothWall	16" Easy-Lock 14-3/4" Premier-Lock 17" Clip-Lock 100 15-1/2" Clip-Lock 150 12" Versa-Span 14" Versa-Span 17" MS100 16" MS150 14" MS200 16" Board & Batten 1-1/2" SmoothWall/Soffit/Shadowline 16" T-Panel Narrow Batten 14" T-Panel Narrow Batten	16" Versa-Span 18" Versa-Span 18" MS200 18" T-Panel Wide Batten 16" Contour 12" Contour	PBR Marion "R" Panel HR-34 Max Corr 7/8" Corrugated	7/8" Corrugated Flat Sheet 48"W x 120"L
--	---	--	---	--

Coil Width		16"			20"			24"			43"			48"		
Name	Color Sample	22 Gauge	24 Gauge	26 Gauge	24 Gauge	22 Gauge	.032 Alum	24 Gauge	22 Gauge	.032 Alum	24 Gauge	22 Gauge	.032 Alum	24 Gauge	22 Gauge	.032 Alum
Glacier White		X	X	*	X	*	*	X	X	X	X	X	*	X	X	X
Sierra Tan				*	X			X			X			X		*
Parchment		X	X			*		X	X		*	X		X	X	
Sterling Grey		X	*	*	X	*	*	X	X	X	X	X	*	X	X	X
Zinc Grey		X	X	*	X	*	*	X	X	X	X	X	*	X	X	X
Charcoal Grey		X	X	*	X	*	*	X	X	X	X	X	*	X	X	X
Saddle Tan				*	X			X			X			X		
Medium Bronze		X	X	*	X	*	*	X	X	X	X	X	*	X	X	X
Tahoe Blue		*	X	*		*		X	*		*	*		X	*	
Pacific Blue					X			X			*			X		
Hemlock Green				*	X			X			*			X		
Forest Green		X	X	*	X	*		X	X		X	X		X	X	
Pine Green			*	*	X			X			*			X		
Dark Bronze		X	X	*	X	*	*	X	X	X	X	X	*	X	X	X
Graphite Black		X	X	*	X	*	*	X	X	X	X	X	*	X	X	X
Matte Black		X	X		X	*	*	X	X	X	X	X	*	X	X	X
Musket			*		X	*		X	X		X	X		X	X	
Terra Cotta			*		X			X			*			X		
Tile Red			*	*	X			X			*			X		
Vintage®			X		*			X			X			X		
Zincalume® Plus		X	X		X	*		X	X		X	X		X		
Galvanized		*	*			*		*	*		*	*		*	*	
Rusteel Plus™ (A606)		X				*			X			X			X	
16oz. Copper (20oz Please inquire)			*		*											
Colonial Red		X	*	*		*		X	X		*	X		X	X	
Retro Red			*					X			*			X		
Metallic Silver		X	*		X	*	*	X	X	X	X	X	*	X	X	X
Champagne		*			X			*			X			*		
Antique Patina					X						X			*		
Copper Penny			X		X			*			X			*		
Weathered Zinc		X	X		X	*	*	X	X	X	X	X	*	X	X	X

For our **entire** panel collection, panel options and additional information, visit [www.taylormetal.com](http://www.taylormetal.com)

PVDF is a fluoropolymer that is manufactured under the trademarked names Kynar 500® and Duranar (PPG). Paint finishes containing a minimum 70% PVDF resin meet the high-performance weathering criteria established by the American Architectural Manufacturing Association and are allowed to carry the Kynar500® trademarked name. Zincalume & Zincalume® Plus are registered trademarks of Bluescope Ltd. Galvalume® is a registered trademark of BIEC International, Inc. Vintage® is a registered trademark of Steelscape, Inc. Kynar® and Kynar 500® is a registered trademarks of Arkema, Inc.