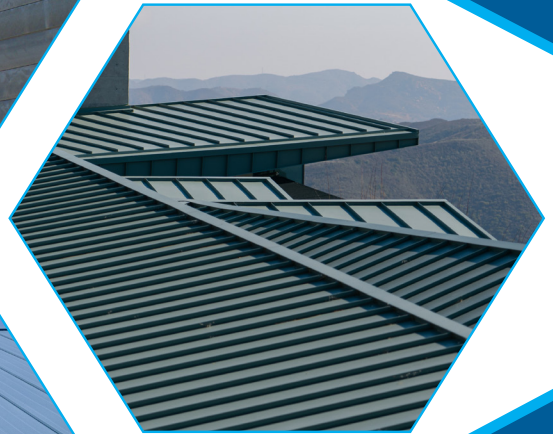
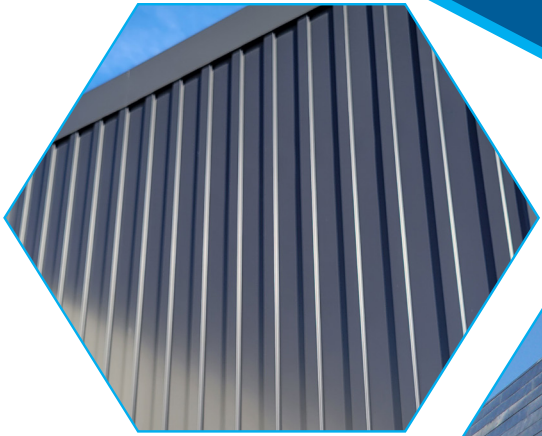


# Metal Roofing & Siding Finish Options

*SOUTHWEST REGION*

*Standard Kynar, Metallic Kynar,  
Premium Finish & Weathering Material*



**TAYLOR**  

---

**METAL PRODUCTS**

RIVERSIDE CA | SACRAMENTO CA | SALEM OR | AUBURN WA | SPOKANE WA

# Standard Kynar 500® PVDF Resin

40-Year Residential/20 and 30 Year Commercial Manufacturer's Limited Warranty

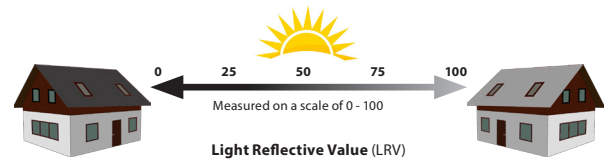


Glacier White SRI-85	Sierra Tan SRI-60	Parchment SRI-58	Sterling Grey SRI-44
Zinc Grey SRI-39	Charcoal Grey SRI-25	Saddle Tan SRI-37	Medium Bronze SRI-36
Tahoe Blue SRI-31	Pacific Blue SRI-26	Hemlock Green SRI-36	Forest Green SRI-24
Graphite Black SRI-26	Dark Bronze SRI-22	Musket SRI-31	Pine Green SRI-25
Terra Cotta SRI-43	Tile Red SRI-43	Colonial Red SRI-37	Retro Red SRI-42
		← Standard Matte Colors	
Matte Black SRI-23	Matte Mansard Brown SRI-28		

# Premium Metallic Kynar 500® PVDF Resin

Premium Pricing Applies

Metallic Silver SRI-60	Champagne SRI-48	Antique Patina SRI-40	Weathered Zinc SRI-39
Copper Penny SRI-50			



**Light Reflective Value (LRV)**  
Measures how much visible light a color reflects and how much it absorbs. The **higher** the LRV, the **most reflective** it will be.



**Solar Reflective Index (SRI)**  
Measures the amount of **heat reflected** from painted metal roof. The higher the SRI value, the cooler the metal will be, helping cut down the **energy costs** to keep your **home cool**.

SRI values listed above are in accordance with ASTM E1980 and are based on actual testing (CRRC Cool Roof Rating Council SRI values (CA Title 24, ENERGY STAR®) are based on the grouping of colors (color families). CRRC SRI values will differ, as each color is not tested in the color family option. Coatings are low gloss 10-15% sheen.

These printed chips provide a close representation of the colors. Metal Samples are available upon request. Custom colors available. "Oil Canning" is an inherent characteristic of roof and wall products, and not a defect, which is not a cause for panel rejection.







## Premium Finish

*Premium Pricing Applies*



Vintage® SRI-19



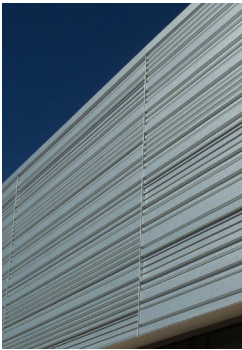
Rustic Rawhide SRI-32

Vintage® is an innovative coating process over a G-90 metallic-coated steel surface. The process creates shade variations from light to dark, the lighter shade exhibiting a grey tone while the darker shade exhibits a bronze or brown tone. The dynamic, pre-aged appearance makes this a beautiful and durable product choice that is also graffiti resistant. Vintage® comes with a 20 year warranty. Warranty can vary by environment, see TMP website for more information.

NOTE: Due to the coating process, Vintage® has a color range. Color can vary from batch-to-batch and have directional variations. Due to color ranges, color matching of this product is not available.

Textured Rustic Rawhide finish provides an unmatched color experience with an engaging combination of color and texture. This textured finish features multi-toned weathered metal design in conjunction with a wrinkled paint system for optimum authenticity. The design interacts dynamically with light to recreate the feel of traditional oxidized metal while minimizing surface sheen.

Supported by a robust warranty. This color pairs beauty and performance. Request your sample today to interact with the stimulating color.



## Weathering Materials

*These materials change appearance overtime*

Real Copper



16 oz. and 20 oz. Copper  
*(please inquire)*

Zincalume® Plus AZ-55

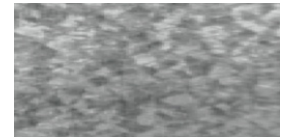


Zincalume® Plus SRI-65  
*No finish warranty – 25 yr. perforation warranty.*

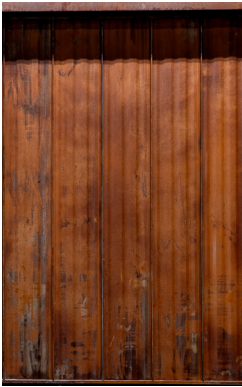
Zincalume® Plus AZ-55 is a 55% aluminum, 45% zinc.

Due to batch differences, color or spangle matching of this product is not available.

Galvanized G-90



Galvanized G-90 SRI-65  
*Metallic coating over steel. No finish warranty. No perforation warranty.*



Rusteel Plus™ Finish



Rusteel Plus™ (A606)  
*general appearance prior to being exposed to the weather*

Rusteel Plus™ is an ideal design for a historic, weathered look. Rusteel Plus™ is best suited for dryer, less humid environments. Rusteel Plus™ has no metallic coating and offers no warranty. The designer should be aware of rust runoff on decks and concrete without gutter protection or separation. Rusteel Plus™ meets ASTM A606-96 Type A. Type 4 has improved corrosion resistance when compared to carbon steel.



Rusteel Plus™ (A606)  
*potential look after weather exposure*



Bonderized



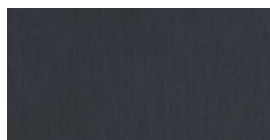
Bonderized

Bonderized steel is G-90 galvanized/metallic coated steel put through a phosphate bath, with a layer of Chromate applied and dried, leaving it ready to accept paint. Bonderized is often referred to as "Paint Grip," meaning that it is designed to be primed and painted in the field. Over time, Architects and Designers have begun selecting Bonderized for non-painted applications; they desire a dull gray appearance.

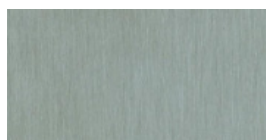
The Bonderizing process does not allow for a consistent pigment or color. The pigment can vary within the same coil batch. Taylor Metal Products cannot guarantee color/pigment of the panels will match within a single order. Bonderized steel has a tendency to scratch when formed and does not store well if wet.



elZinc® Finishes



elZinc Graphite®



elZinc Slate® SRI-18

Designed to endure, 99% pure/natural zinc is a long-lasting material that maintains its integrity over the life of the building. elZinc® doesn't require special maintenance during its long service life. In SLATE, the pre-weathered finish is achieved using a non-polluting phosphate treatment that preserves and respects the initial properties of zinc, while in GRAPHITE, it is pre-weathered to a very dark, almost black, shade of grey.

Name	Color Sample	SRI	24 Gauge Steel	22 Gauge Steel	0.032 Aluminum	0.040 Aluminum
Glacier White		85	Stocked	Stocked	Stocked	Stocked
Matte Black		23	Stocked	Stocked	Stocked	Stocked
Graphite Black		26	Stocked	Stocked	Stocked	Stocked
Medium Bronze		36	Stocked	Stocked	Stocked	Stocked
Dark Bronze		22	Stocked	Stocked	Stocked	Stocked
Charcoal Grey		25	Stocked	Stocked	Stocked	Stocked
Weathered Zinc		39	Stocked	Stocked	Stocked	
Metallic Silver		60	Stocked	Stocked	Stocked	
Zinc Grey		39	Stocked	Stocked	Stocked	
Sterling Grey		44	Stocked	Stocked	Stocked	
Sierra Tan		60	Stocked	Stocked	Stocked	
Real Copper		—	16oz. Stocked	20oz. Stocked		
Saddle Tan		37	Stocked	Stocked		
Musket		31	Stocked	Stocked		
Parchment		58	Stocked	Stocked		
Matte Mansard Brown		28	Stocked	Stocked		
Terra Cotta		43	Stocked	Stocked		
Colonial Red		37	Stocked	Stocked		
Hemlock Green		36	Stocked	Stocked		
Tahoe Blue		31	Stocked	Stocked		
Champagne Metallic		48	Stocked	Stocked		
Zincalume		—	Stocked	Stocked		
Galvanized		—	Stocked	Stocked		
Rusteel Plus™ (A606)		—		Stocked		
eZinc Graphite® (real zinc)		—	Stocked (please inquire)	Stocked (please inquire)		
eZinc Slate® (real zinc)		18	Stocked (please inquire)	Stocked (please inquire)		
Rustic Rawhide		32	Stocked			
Vintage®		19	Stocked			
Tile Red		35	Stocked			
Retro Red		42	Stocked			
Forest Green		24	Stocked			
Pine Green		25	Stocked			
Pacific Blue		26	Stocked			
Antique Patina		40	Stocked			
Copper Penny		50	Stocked			
Bonderized		—	Stocked			

For our **entire** panel collection, panel options and additional information, visit [www.taylormetal.com](http://www.taylormetal.com)

PVDF is a fluoropolymer that is manufactured under the trademarked names Kynar 500® and Duranar (PPG). Paint finishes containing a minimum 70% PVDF resin meet the high-performance weathering criteria established by the American Architectural Manufacturing Association and are allowed to carry the Kynar500® trademarked name. Zincalume & Zincalume® Plus are registered trademarks of Bluescope Ltd. Galvalume® is a registered trademark of BIEC International, Inc. Vintage® is a registered trademark of Steelscape, Inc. Kynar® and Kynar 500® is a registered trademarks of Arkema, Inc.