



OR/WA ACCESSORIES GUIDE



Table of Contents

Underlayment.....	2
Insulation.....	3
Fasteners.....	4-9
Concealed Fasteners.....	4-5
Exposed Fasteners.....	6
Woodfast.....	7
Self-Drillers.....	8
Stainless Steel.....	9
For Aluminum.....	10
Clips.....	11-15
Versa-Span™.....	11
MS-100™ / MS-150™.....	12
MS200™.....	13
Contour.....	14
Slim-Lock™ / T-Panel™ / Gutter Hanger / Plate.....	15
Snow Retention/S-5! Clamps.....	16-17
Sealants.....	18-20
Gunnable.....	18-19
Tape.....	20
Closures.....	21-24
Pipe Flashings.....	25-27
Standard / High Temp. Rating.....	25
Retrofit Dektite / Chemlink Pipe Flashings.....	26
CoVent® Exhaust Fan Vent.....	27
Skylight Panels.....	28-29
Polycarbonate.....	28
Fiberglass.....	29
Miscellaneous.....	30-31
Door Track Hardware.....	32-37

UNDERLAYMENT

TMP SAM-HT – Ice & Water Shield Underlayment



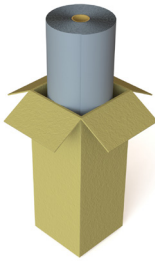
[Click here](#) for more info

Self-adhering roofing underlayment designed for steep-slope roof applications. It features a top surface with **STRONGHOLD™** skid-resistant technology. High temperature underlayment (up to 250°F), minimum slope: 1/2:12 (BABA Compliant Product)

Product Part #: AIWTMPSAMHT

Product Units & Weight: Pallet 30pc / 45.0lbs per roll

Titanium UDL25 Synthetic Underlayment

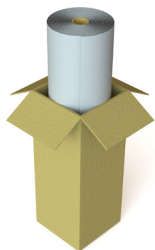


[Click here](#) for more info

Product Part #: AIWTUDL25

Product Units & Weight: Pallet 56pc. / 25.0lbs per roll

Dura-Skrim - White



[Click here](#) for more info

Vapor barrier recommended for open purlin structures
8' x 65'

ADU8.65W

Pallet 40pc. / 18.0lbs per roll

8' x 125'

ADU8.125W

Pallet __pc. / 30.0lbs per roll

14' x 100'

ADU14.100W

Pallet 20pc. / 42.0lbs per roll

20' x 100'

ADU20.100W

Pallet 20pc. / 60.0lbs per roll

Polystick XFR Fire Resistant Self-Adhered Roof Underlayment



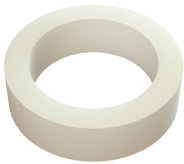
Dual purpose fire resistant and self-adhered waterproofing underlayment, with a temperature resistance up to 265°F. Features a slip-resistant film surface that can be exposed up to 180 days. Minimum slope: No min., works for all slopes

Product Part #: AIWPHT

Product Units & Weight: Pallet 20pc. / 75.0lbs per roll

INSULATION

Double Sided-Tape 1-1/2" x 180'



[Click here](#) for more info

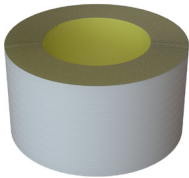
A high performance tape specifically designed for tough bonding applications. Has excellent UV and temperature resistance, and performs well at high and low temperatures.

Product Part #: ADST

**Product Units & Weight: 0.92lbs per tape
28.56lbs per box**

VRR Insulation Patch Tape - 3" x 150'

Used for taping up holes or tears in insulation



Product Part #: AIT

**Product Units & Weight: 1.49lbs per tape
23.90lbs per box**

VRR (vinyl backed) Insulation Blanket 2" - (see below)



[Click here](#) for more info

6' x 27'

AI27

Pallet 25pc. / 15.0lbs per roll

6' x 33'

AI33

Pallet 25pc. / 27.0lbs per roll

6' x 39'

AI39

Pallet 25pc. / 35.0lbs per roll

6' x 43'

AI43

Pallet 25pc. / 47.0lbs per roll

FASTENERS

CONCEALED FASTENERS

Pancake Phillips Head - Recommended for panel and clip attachment to wood



#10 x 1"

ASPHP100

**Bag 250pc. / 1.77lbs per bag
29.27lbs per box**

#10 x 1"

ASPHP100 - STAINLESS

**Bag 250pc. / 0.75lbs per bag
28.48lbs per box**

#10 x 1-1/2"

ASPHP150

Bag 250pc. / 2.39lbs per bag

#10 X 2"

ASPHP200

**Bag 250pc. / 3.04lbs per bag
31.18lbs per box**

Pancake Quadrex Head - Recommended for panel and clip attachment to wood



#10 x 1"

ASPHQ100

Bag 250pc. / 1.89lbs per bag

#10 x 1-1/2"

ASPHQ150

Bag 250pc. / 0.75lbs per bag

#10 X 2"

ASPHQ200

Bag 250pc. / 0.75lbs per bag

**Riverside only*

[Click here](#) for more info

#10x1" Pancake Quadrex Head Tek Self-Driller

Recommended for panel and clip attachment to steel



Product Part #: ASPHQT100

**Product Units & Weight: Bag 250pc. / 1.70lbs per bag
29.75lbs per box**

[Click here](#) for more info

Pancake Square Head Screw - Recommended for panel and clip attachment to wood



#10 x 1" Pancake Square Head Screw

Product Part #: ASPHS100

Product Units & Weight: Bag 250pc. / 1.77lbs per bag

#10 x 1-1/2 Square Drive (special order)

Product Part #: ASPHS150

Product Units & Weight: Bag 250pc. / 2.38lbs per bag

FASTENERS

CONCEALED FASTENERS

Waferhead Phillips Head

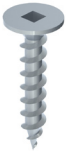
Recommended for panel and clip attachment to wood



1"	ASWHP100 Bag 250pc. / 1.43lbs per bag 23.70lbs per box
1-1/2"	ASWHP150 Bag 250pc. / 1.65lbs per bag 34.15lbs per box

Waferhead Square Drive

Recommended for panel and clip attachment to wood



1"	ASWHS100 Bag 250pc. / 1.67lbs per bag 34.73lbs per box
1-1/2"	ASWHS150 Bag 250pc. / 2.21lbs per bag 28.84lbs per box
2"	ASWHS200 Bag 250pc. / 2.87lbs per bag

Lathhead Tek Point

Shallow trim screw that can be used over areas where screw may peak from underneath (example: overhang)



#8 x 9/16"	ASLHT050 Bag 250pc. / 0.83lbs per bag
#8 x 3/4"	ASLHT075 Bag 250pc. / 1.05lbs per bag

Lathhead Sharp Point

Shallow trim screw



#8 x 9/16"	ASLH050 Bag 250pc. / 0.79lbs per bag
<i>Used as an alternative to Waferhead screws</i>	
#8 x 1"	ASLH100 Bag 250pc. / 1.29lbs per bag

FASTENERS

EXPOSED FASTENERS

#43 Pop Rivet (1/8") - Stainless

Rivets are used to attach metal such as lap joints, trim to trim, trim to panel, and side lap attachment.



**Available in plain and painted*

Product Part #: APR-Stainless

**Product Units & Weight: Bag 100pc. / 0.31lbs per bag
8.22lbs per box**

#64 & #44 Stainless Closed End Rivet (3/16")

Used where a watertight application is required when metal layers are sandwiched with butyl tape.



Product Part #s: APCR64, APCR44

**Product Units & Weight: Bag 100pc. / 0.78lbs per bag
38.75lbs per box**

#12 x 3/4" Woodfast Screw (Stitch)

Stitch screws are used to attach metal to metal such as lap joints, trim to trim, trim to panel and side lap attachment. They can be used interchangeably with rivets.



[Click here](#) for more info

Product Part #: ASWF075

**Product Units & Weight: Bag 250 pc. / 2.10lbs per bag
Box 12 bags/ 26.05lbs per box**

FASTENERS

WOODFAST

#10 Woodfast



[Click here](#) for more info

Trim or panel screw, recommended use for metal to wood applications.

#10 x 1"

ASWF100

Bag 250 pc. / 2.00lbs per bag

Box 12 bags/ 25.19lbs per box

#10 x 1-1/2"

ASWF150

Bag 250 pc. / 2.67lbs per bag

Box 10 bags/ 26.18lbs per box

#10 x 2"

ASWF200

Bag 250 pc. / 3.15lbs per bag

26.17lbs per box

#17 x 1" Goof Screw - galvanized only



Trim or panel screw, recommended use for metal to wood applications when replacing smaller fasteners.

**Colors special order*

Product Part #: ASGS100-GA

**Product Units & Weight: Bag 250pc. / 3.50lbs per bag
38.61lbs per box**

#14 Type-S Woodfast



#14 Woodfast screws are used to attach panel to plywood/OSB.

**Available in plain, painted, and stainless*

#14 x 1"

ASWFS100

Bag 250pc. / 3.51lbs per bag

Box 10 bags/ 34.91lbs per box

#14 x 1.5"

ASWFS150

Bag 250pc. / 3.91lbs per bag

Box 8 bags / 38.38lbs per box

#14 x 2"

ASWFS200

Bag 250pc. / 5.71lbs per bag

35.16lbs per box

FASTENERS

SELF-DRILLERS

#12 Tek Self Diller



[Click here](#) for more info

Tek screws are used for attaching panels to metal purlins (metal to metal)

#12 x 1"

AST100

Bag 250pc. / 3.46lbs per bag

Box 10 bags/ 35.1lbs per box

#12 x 1.5"

AST150

Bag 250pc. / 4.12lbs per bag

Box 8 bags/ 33.94lbs per box

#12 x 2"

AST200

Bag 250pc. / 4.89lbs per bag

35.3lbs per box

#12 Tek Screw Hex Head (No Washer)

Used mainly for steel frame buildings and our OverEZee's



[Click here](#) for more info

#12 x 1"

ASTNW100

Bag 250pc. / 2.66lbs per bag

#12 x 1-1/2"

ASTNW150

Bag 250pc. / 3.43lbs per bag

#14 x 7/8" Lap Tek Stitch



Stitch screws are used to attach metal to metal such as lap joints, trim to trim, trim to panel, and side lap attachment. They can be used interchangeably with rivets.

Product Part #: AST087

Product Units & Weight: Bag 250pc. / 3.52lbs per bag

Box 10 bags/ 36.05lbs per box

FASTENERS

STAINLESS STEEL FASTENERS

#9 x 1" 304 Stainless Steel Woodfast Screw

Recommended use for metal to wood applications.

**For aluminum*



Product Part #: ASWFAL100

**Product Units & Weight: Bag 250pc. / 2.06lbs per bag
25.03lbs per box**

#12 x 1" Self Driller 304 Stainless Steel

Recommended use to attach panels to metal or metal to metal applications.

**Goes with stitch screw*

***For aluminum*



Product Part #: ASTAL100

Product Units & Weight: Bag 250pc. / 3.11lbs per bag

#14 x 1" Type S 304 Stainless Steel

Recommended use when attaching panel to plywood/OSB.

**For aluminum*



Product Part #: ASWFSAL100

**Product Units & Weight: Bag 250pc. / 1.86lbs per bag
19.59lbs per box**

FASTENERS

FOR ALUMINUM

#10 x 1" ZAC Woodfast Screw



Recommended use for metal to wood applications.

**For aluminum*

Product Part #: ASZACWF100

**Product Units & Weight: Box 10 bags / 3lbs per bag
35lbs per box**

#12 x 1-1/2" ZAC Self Driller



Recommended use for metal to metal applications.

**For aluminum*

Product Part #: ASZACT150

**Product Units & Weight: Box 6 bags / 5lbs per bag
34lbs per box**

#14 x 7/8" ZAC Self Driller Lap Tek



Stitch screws are used to attach metal to metal such as lap joints, trim to trim, trim to panel, and side lap attachment. They can be used interchangeably with rivets.

**For aluminum*

Product Part #: ASZACT087

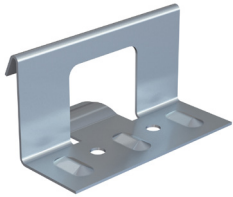
**Product Units & Weight: Box 8 bags / 4lbs per bag
39lbs per box**

CLIPS

VERSA-SPAN™ / T-PANEL™

Versa-Span™ 1-3/4" x 3-1/2" 18GA Clip UL Rated

**Available in stainless steel*



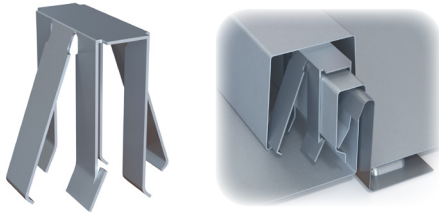
Product Part #: AVSCLIP-UL

Product Units & Weight: Box Quantity 250pc. / 38.68lbs per box / 0.15lbs per piece

Batten Trim (Spider) Clip

Used in combination with a Versa-Span™ clip and wide batten panel system.

**Special order item*



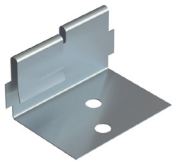
Product Part #: AVSCLIP-SPIDER

Product Units & Weight: Box Quantity 500pc. / 50.5lbs per box / 0.05lbs per piece

T-Panel™ Clip 24GA

Used with a narrow batten panel system.

**Available in stainless steel, copper, and galvanized*



Product Part #: ATPCLIP

Product Units & Weight: Box Quantity 1000pc. / 37.75lbs per box / 0.04lbs per piece

T-Panel Clip (Wide Batten)

Used with a wide batten panel system.

**Special order, Riverside only*



Product Part #: ATPCLIPW

Product Units & Weight

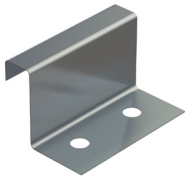
CLIPS

MS-100™ / MS-150™

24GA MS-100™ 1" Fixed Clip w/ Sealant

Recommended for panel lengths less than 35 ft.

**Available in stainless steel*



Product Part #: AMSCLIP100

Product Units & Weight: Box Quantity 500pc. / 17.57lbs per box / 0.03lbs per piece

MS-150™ 1-1/2" Fixed w/ Sealant

Recommended for panel lengths less than 35 ft.

**Available in stainless steel*



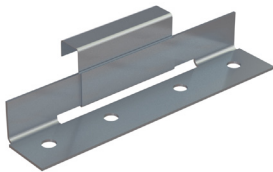
Product Part #: AMSCLIP150

Product Units & Weight: Box Quantity 250pc. / 13.0lbs per box / 0.05lbs per piece

MS-100™ 1" Floating Clip w/ Sealant

Recommended for panel lengths 35 ft. or more.

**Available in stainless steel*



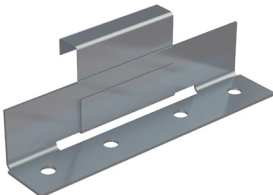
Product Part #: AMSCLIPF100

Product Units & Weight: Box Quantity 250pc. / 26.84lbs per box / 0.16lbs per piece

MS-150™ 1-1/2" (UL) Floating Clip w/ Sealant

Recommended for panel lengths 35 ft. or more.

**Available in stainless steel*



Product Part #: AMSCLIPF150

Product Units & Weight: Box Quantity 250pc. / 44.0lbs per box / 0.17lbs per piece

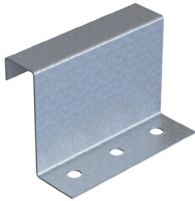
CLIPS

MS-200™

MS-200™ 2" Fixed Clip w/ Sealant

Recommended for panel lengths less than 35ft.

**Also available in 2-1/4", 2-3/8", & 2-1/2" heights*



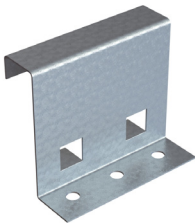
Product Part #: AMSCLIP200NT

Product Units & Weight: Box Quantity 250pc. / 27.66lbs per box / 0.10lbs per piece

MS-200™ 2-1/2" Fixed Clip Elevated

Used on metal buildings to lift the panel to allow room for insulation.

Recommended for panel lengths less than 35 ft.



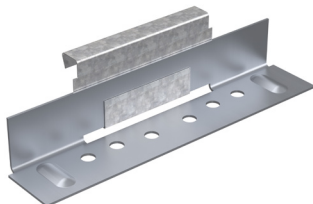
Product Part #: AMSCLIFE250

Product Units & Weight: Box Quantity 250pc. / 38.05lbs per box / 0.14lbs per piece

MS-200™ 2" (UL) Floating Clip w/ Sealant

Recommended for panel lengths 35 ft. or more.

**Also available in 2-1/4", 2-3/8", & 2-1/2" heights*



Product Part #: AMSCLIPF200NT

Product Units & Weight: Box Quantity 250pc. / 47.60lbs per box / 0.18lbs per piece

MS-200™ Standoff (FM) Floating Clip w/ Sealant

Recommended for panel lengths 35 ft. or more.

**Required for FM approved projects*



2" Height

AMSCLIPF200FM

Box Quantity 110pc. / 22.05lbs per box / 0.10lbs per piece

3" Height

AMSCLIPF300FM

Box Quantity 100pc. / 0.20lbs per piece

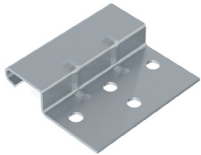
**Special order*

CLIPS

CONTOUR

Contour Brake Form Standard Clip - 18GA 2-1/2" Wide

Used with brake-formed siding panels.

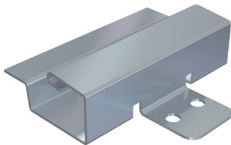


Product Part #: ACONTOURCLIP

Product Units & Weight: Box Quantity 500pc. / 45.29lbs per box / 0.09lbs per piece

Contour Brake Form Standoff Clip - 18GA 3-1/2" Wide

Used with brake-formed siding panels - lifts panel up 1/2" from the wall.



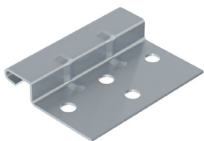
Product Part #: ACONTOURSCCLIP

Product Units & Weight: Box Quantity 250pc. / 44.06lbs per box / 0.18lbs per piece

Contour Express Standard Clip - 18GA 2-1/2" Wide

Used with roll formed siding panels.

**Roll formed*



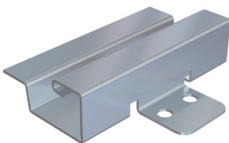
Product Part #: ACONEXCLIP

Product Units & Weight: Box Quantity 500pc. / 41.09lbs per box / 0.08lbs per piece

Contour Express Standoff Clip - 18GA 3-1/2" Wide

Used with roll-formed siding panels - lifts panel up 1/2" from the wall.

**Roll formed*



Product Part #: ACONEXSCCLIP

Product Units & Weight: Box Quantity 250pc. / 47.19lbs per box / 0.19lbs per piece

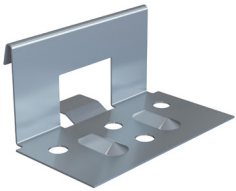
CLIPS

SLIM-LOCK™ / EASY-LOCK™ / GUTTER HANGER / PLATE

Standard Slim-Lock™ 1-1/4" x 2-1/2" 20GA Fixed Clip

Product Part #: ASMCLIP

*Product Units & Weight: Box Quantity 250pc. /
0.07lbs per piece*



Easy-Lock™/StreamLine™ High Wind Clip 24GA

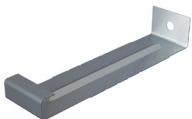
Product Part #: AELHWCLIP

*Product Units & Weight: 50.28lbs per box / 0.21lbs per
piece*



18GA 6" Gutter Hanger

Used together with the Box Gutter (ELBG).

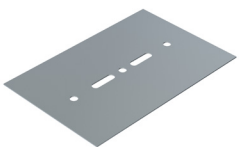


Product Part #: AGH6

*Product Units & Weight: Box Quantity 200pc. / 33.28lbs per box /
0.16lbs per piece*

4" x 6" Bearing Plate - Universal

**22ga, inquire for heavier gauges*



Product Part #: ABP

*Product Units & Weight: Box Quantity 200pc. / 49.33lbs per box /
0.24lbs per piece*

SNOW RETENTION/S-5! CLAMPS

For more information, please visit www.s-5.com

S-5-H90 Clamp



[Click here](#) for more info

Clamp is turned on its side 90° (as shown on left) and used on our single-fold MS200™ panel.

Product Part #: ACLAMPS5H90

Product Units & Weight: Box Quantity 120pc. / 50.14lbs per box / 0.62lbs per piece

S-5-N Clamp



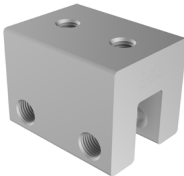
[Click here](#) for more info

Most ideal for 1" nail strip panels, like our Easy-Lock™ and StreamLine™ panels.

Product Part #: ACLAMPS5N

Product Units & Weight: Box Quantity 120pc. / 50.14lbs per box / 0.62lbs per piece

S-5-S Clamp



[Click here](#) for more info

Created for specific use with popular snap-together profiles like our Versa-Span™, Slim-Lock™ and Clip-Lock™ panels. Can also be used with single-fold profiles like our MS100™/MS150™ panels.

Product Part #: ACLAMPS5S

Product Units & Weight: Box Quantity 120pc. / 50.14lbs per box / 0.62lbs per piece

S-5-U Clamp



[Click here](#) for more info

A universal and versatile roof clamp. Can be used on our standing seam panels, or if turned 90° can be used on vertically-oriented seams.

Product Part #: ACLAMPS5U

Product Units & Weight: Box Quantity 120pc. / 50.14lbs per box / 0.62lbs per piece

S-5-V Clamp



[Click here](#) for more info

Ideal for our double-fold MS100™, MS150™ and MS200™ panels.

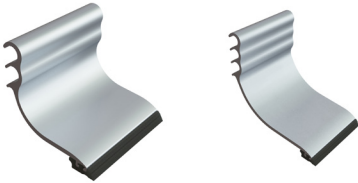
Product Part #: ACLAMPS5V

Product Units & Weight: Box Quantity 120pc. / 50.14lbs per box / 0.62lbs per piece

SNOW RETENTION/S-5! PRODUCTS

For more information, please visit www.s-5.com

SnoClip



[Click here](#) for more info

Helps slow down the migration of snow and ice beneath the ColorGard bracket.

SnoClip II

ASN2

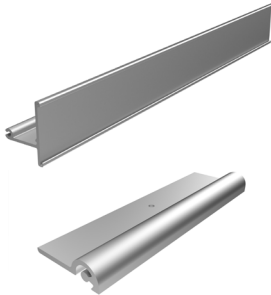
Box Quantity 165pc. / 0.20lbs per piece

SnoClip III

ASN3

Box Quantity 105pc. / 0.20lbs per piece

ColorGard Bracket - Unpunched



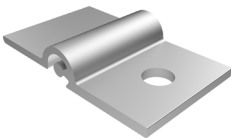
[Click here](#) for more info

Can accommodate any seam spacing, and compatible with any S-5! snow clamps. Optional 2" color strip can be inserted to match the color of metal roof. Includes splice part, which joins adjacent ColorGard brackets to maintain structural continuity. Splice part also provides for thermal linear expansion and contraction.

Product Part #: ABCGU

Product Units & Weight: 8 foot lengths (ColorGard Bracket) / 3.91lbs per piece

VersaClip



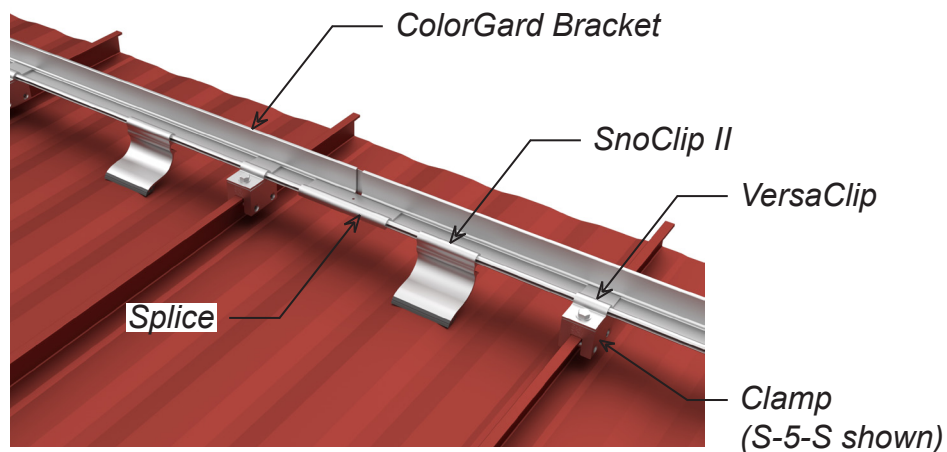
[Click here](#) for more info

Connects ColorGard bracket to any S-5! standard clamps.

Product Part #: AVC

Product Units & Weight: Box Quantity 400pc. / 26.59lbs per box / 0.09lbs per piece

Snow Retention System

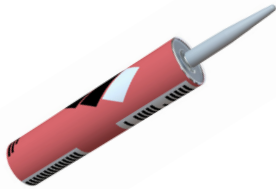


SEALANTS

GUNNABLE

Prime Adhere

**Available in clear, black, white*



Product Part #: APAC-_____

Product Units & Weight: Box 20 pc. / 1.00lbs per tube

XB1500 Butyl Caulking Skinning/Curing - Grey

*Is **paintable**. Will harden up once fully cured, ideal for areas that are subject to minimal movement (ex: lapping flashings, pipe flashings)*



[Click here](#) for more info

Product Part #: ABCS-GREY

Product Units & Weight: Box 24pc. / 21.42lbs per box / 0.86lbs per tube

Butyl Caulking Non-Skinning

*Is **non-paintable**. Permanently pliable, ideal for areas subject to movement (ex: eave, valley, longer panels, etc.).*

**Available in grey, black, white and dark bronze*



[Click here](#) for more info

Product Part #: ABC-_____

Product Units & Weight: Box 30pc. (Black & Dark Bronze) / Box 24pc. (Grey & White) / 0.86lbs per tube

Flex Seal Caulking - Clear

*Is **paintable**. Recommended use for sealing small joints or cracks, up to 1/4".*



[Click here](#) for more info

Product Part #: AFSC

Product Units & Weight: Box 12pc. / 9.89lbs per box / 0.86lbs per tube

SEALANTS

GUNNABLE

MetaLink Flexible Sealant



[Click here](#) for more info

*Silicone sealant and **non-paintable**. Used for high temperature applications, up to 400°. Also used where exposure to UV rays is possible.*

**Available in Clear, White, Dark Bronze, Medium Bronze, Black, Charcoal Grey, and Silver Metallic*

Product Part #: AMLS-_____

Product Units & Weight: Box 12pc. / 9.96lbs per box / 1.00lbs per tube

DuraLink 50 Super Adhesion Sealant



[Click here](#) for more info

*Is **paintable**. Has an elastic moisture cure, ideal for areas subject to movement (ex: eave, valley, longer panels, etc.).*

**Available in White, Dark Bronze, Medium Bronze, Black, Grey, and Aluminum Grey. Other colors available special order.*

Product Part #: ADLS-_____

Product Units & Weight: Box 24pc. / 24.63lbs per box / 1.00lbs per tube

General Purpose Sealant



[Click here](#) for more info

*Is **paintable** within 24 hours. Has an elastic moisture cure and waterproof seal to most metal and anodized aluminum. Ideal for areas subject to movement (ex: eave, valley, longer panels, etc.) along with most siding, window and metal flashings.*

Product Part #: ACLS-CLEAR

Product Units & Weight: Box 24pc. / 20lbs per box / 0.8lbs per tube

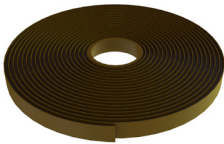
SEALANTS

TAPE

Double Bead Mastic Butyl 7/8" x 3/16" x 25'

Product Part #: ABTDBM

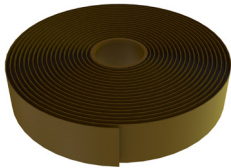
*Product Units & Weight: Box 8pc. / 17.55lbs per box /
2.00lbs per roll*



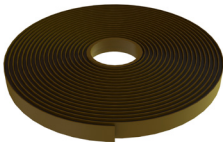
Triple Bead Mastic Butyl 2-1/2" x 3/16" x 20'

Product Part #: ABTTBM

*Product Units & Weight: Box 6pc. / 27.90lbs per box /
2.00lbs per roll*



Butyl Tape



3/32" x 1/2" x 50'

ABT050-50

*Box 20pc. / 91.0lbs per box /
2.00lbs per roll*

1/8" x 1" x 40'

ABT100-40

*Box 12pc. / 46.19lbs per box /
2.00lbs per roll*

1/8" x 1/2" x 35'

ABT050

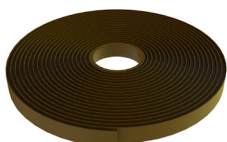
*Box 40pc. / 96.0lbs per box /
2.00lbs per roll*

3/32" x 3/4" x 50'

ABT075-50

*Box 14pc. / 41.0lbs per box /
0.84lbs per roll*

Butyl Rope 3/16" x 25'



Product Part #: ABT025

*Product Units & Weight: Box 48pc. / 89.0lbs per box /
2.00lbs per roll*

CLOSURES

FORMED CLOSURES (closed cell foam closures)

T-3™ 3' Formed Foam Closures



T-3™ Inside

AFCT3I

Box 100pc. / 3.71lbs per box / 0.10lbs each



T-3™ Outside

AFCT3O

Box 100pc. / 5.31lbs per box / 0.10lbs each

Tuff Rib 3' Formed Foam Closure



Tuff Rib Inside

AFCTRI

Box 100pc. / 3.57lbs per box / 0.10lbs each



Tuff Rib Outside

AFCTRO

Box 100pc. / 5.33lbs per box / 0.10lbs each

PBR 3' Formed Foam Closure



PBR Inside

AFCPBRI

Box 100pc. / 4.30lbs per box / 0.10lbs each



PBR Outside

AFCPBRO

Box 100pc. / 6.97lbs per box / 0.10lbs each

HR-34™ 34" Formed Foam Closure w/ Adhesive



Product Part #: AFCHR34

Product Units & Weight: Box 100pc. / 5.87lbs per box / 0.10lbs each

CLOSURES

FORMED CLOSURES CONT.

GR-7™ Formed Foam Closure



GR-7™ Inside

AFCGR7I

Box 100pc. / 3.62lbs per box / 0.10lbs each



GR-7™ Outside

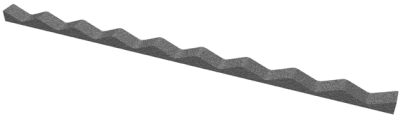
AFCGR7O

Box 100pc. / 4.04lbs per box / 0.10lbs each

2-1/2" Corrugated 24" Formed Foam Closure w/ Adhesive

Product Part #: AFC2C

Product Units & Weight: Box 100pc. / 3.20lbs per box / 0.10lbs each



Classic 7/8" Corrugated 37" Formed Foam Closure

Product Part #: AFCCC

Product Units & Weight: Box 100pc. / 4.91lbs per box / 0.10lbs each

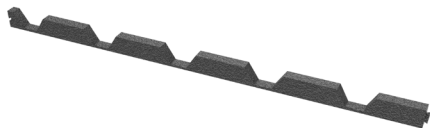


BR-36 Formed Foam Closure

BR-36 Inside

AFCBR36I

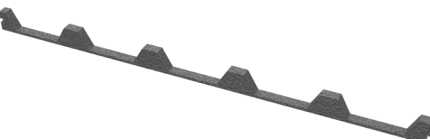
Box 100pc. / 0.05lbs each



BR-36 Outside

AFCBR36O

Box 100pc. / 5.51lbs per box / 0.05lbs each



CLOSURES

FORMED CLOSURES CONT.

12" Easy-Lock™ Foam Closure (36") Closed Cell

Product Part #: AFCEL

Product Units & Weight: Box 100 pc. / 6.69lbs per box / 0.30lbs each



StreamLine™ or 16" Easy-Lock™ Foam Closure (32") Closed Cell

Product Part #: AFCSL

Product Units & Weight: Box 100pc. / 6.53lbs per box / 0.10lbs each

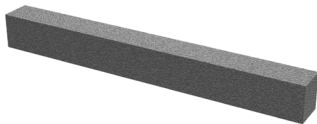


MS-200™ and Versa-Span™ Foam Closure

18" x 2" x 1-3/4"

AFCMSVS

Box 50pc. / 5.09lbs per box / 0.15lbs each



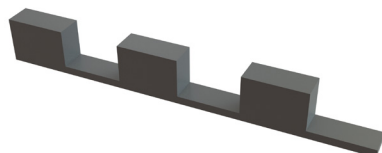
1-5/8" x 2-1/8" x 10'

AFCMSVS10

Box 100pc. / 0.15lbs each

Contour Closure 1-1/4" C-5

**Other profiles available, special order*



Product Part #:

Product Units & Weight: Box 100pc. / 3.58lbs per box / 0.05lbs each

CLOSURES

VENTED CLOSURES

12" Easy-Lock™ Vented Ridge Foam Closure (36")



[Click here](#) for more info

Product Part #: AFCELV

Product Units & Weight: Box 25pc. / 5.55lbs per box / 0.10lbs each

StreamLine™ or 16" Easy-Lock™ Vented Foam Closure (32")



[Click here](#) for more info

Product Part #: AFCSLV

Product Units & Weight: Box 25pc. / 5.27lbs per box / 0.15lbs each

Snap-Z



A vented closure that is pre-punched and has pre-applied butyl tape. Available for our Easy-Lock™ and select MS150 panels (Versa Span and MS200 are available for special order).

Product Part #: ASZEL12, ASZEL16, ASZMS15012, ASZMS15016

Product Units & Weight: Box 50pc. / Weight varies per closure

Versa Vent Universal Closure



[Click here](#) for more info

Universal closure used with a wide variety of panels including PBR, Tuff Rib, T-3™, GR-7™, Classic 7/8" Corrugated™, Classic V Rib™, BR-36 and HR-34™

1" x 10'

AFCVV

Box 10pc. / 5.25lbs per box / 0.05lbs each

1-1/4" x 10'

AFCVV.25

Box 10pc. / 5.79lbs per box / 0.15lbs each

Vista Vent Universal Foam Closure 1" x 2" x 20"



Universal vented closure, able to fit a range of panels.

Product Part #: AFCVI20

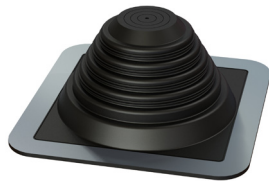
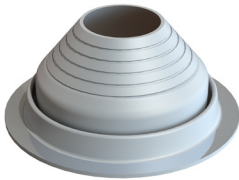
Product Units & Weight: 2 Rolls at 10' / 1.00lbs per roll

PIPE FLASHINGS

STANDARD - Colors & Square Base special order



**Special order - please inquire for color*



**Special order - please inquire for square base*

[Click here](#) for more info

#1 - 1/4" - 2"

APF1

Box 15pc. / 3.22lbs per box / 0.20lbs each

#2 - 1-3/4" - 3-1/4"

APF2

Box 15pc. / 4.98lbs per box / 0.35lbs each

#3 - 2-1/4" - 4"

APF3

Box 15pc. / 7.08lbs per box / 0.50lbs each

#4 - 3" - 6"

APF4

Box 10pc. / 6.56lbs per box / 0.80lbs each

#5 - 4" - 7"

APF5

Box 10pc. / 9.27lbs per box / 1.02lbs each

#6 - 5" - 9"

APF6

Box 10pc. / 12.90lbs per box / 1.50lbs each

#7 - 6" - 11"

APF7

Box 10pc. / 12.07lbs per box / 1.85lbs each

#8 - 7" - 13"

APF8

Box 5pc. / 9.61lbs per box / 2.17lbs each

#9 - 10" - 18"

APF9

Box 5pc. / 6.00lbs each

HIGH TEMP RATING - Up to 390°



#4 - 3" - 6"

APFHT4

Box 10pc. / 6.79lbs per box / 0.73lbs each

#6 - 5" - 9"

APFHT6

Box 10pc. / 13.23lbs per box / 1.40lbs each

#7 - 6" - 11"

APFHT7

Box 10pc. / 1.85lbs each

#8 - 7" - 13"

APFHT8

Box 5pc. / 9.75lbs per box / 2.17lbs each

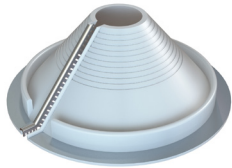
#9 - 10" - 18"

APFHT9

Box 5pc. / 5.98lbs each

PIPE FLASHINGS

RETROFIT DEKTITE



Small - 3/4" - 2-3/4"

Medium - 2" - 7-1/4"

Large - 3-1/4" - 10"

APFRS

Box 5pc. / 1.84lbs per box / 0.50lbs each

APFRM

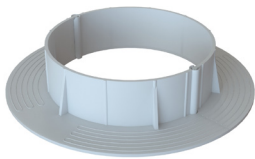
Box 5pc. / 5.45lbs per box / 1.00lbs each

APFRL

Box 5pc. / 1.92lbs each

CHEMLINK PIPE FLASHINGS

E-Curb



[Click here](#) for more info

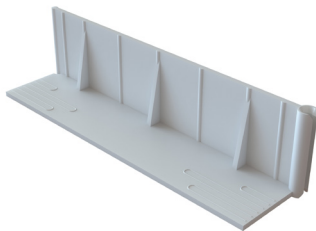
Also available in 2"-6" and 9" diameter rounds

(inquire for other configurations). Used in combination with MetaLink & DuraLink 50 sealants.

Product Part # AECR

Product Units & Weight: Box quantity varies / 0.20lbs each piece

Long Straight



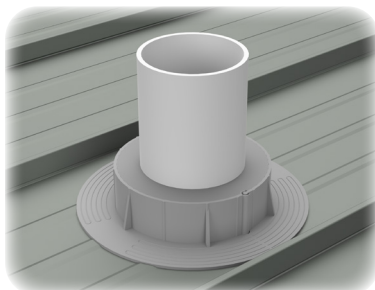
[Click here](#) for more info

Used in combination with E-Curb to stretch over multiple pipes.

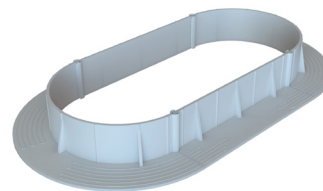
Available in 3" and 8" lengths. Used in combination with MetaLink & DuraLink 50 sealants.

Product Part # AECS

Product Units & Weight: Box 16pc. / 0.20lbs each



Leave 1" gap between E-Curb and pipe. Fill gap with sealant.



E-Curb and Straights in use together.

PIPE FLASHINGS

COVENT®



[Click here](#) for more info

Intended for bathroom and attic venting, and ideal for interior exhaust fans equipped with a 4" flex hose.

**Available in grey and black*

**Product Part #: AEF40-GR
AEF40-BL**

Product Units & Weight: Box 1pc. / 3.7lbs per box

SKYLIGHT PANELS

POLYCARBONATE

Tuff Rib



[Click here](#) for more info

*Available in 0.8mm clear, white & grey
Clear & white lengths: 2', 2'6", 10', 12', 16'
Grey only lengths: 24'*

***Product Part #: APCTRC-FT, APCTRW-FT, APCTRG-FT
Product Units & Weight: linear foot / 1.20lbs per foot***

T-3™



[Click here](#) for more info

*Available in 0.8mm clear & white
Lengths: 2', 2'6", 24'*

***Product Part #: APCT3C-FT, APCT3W-FT
Product Units & Weight: linear foot / 1.20lbs per foot***

PBR



[Click here](#) for more info

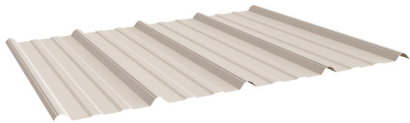
*Available in 0.8mm clear & white
Lengths: 10', 12', 16'*

***Product Part #: APCPBRC-FT, APCPBRW-FT
Product Units & Weight: linear foot / 1.20lbs per foot***

SKYLIGHT PANELS

FIBERGLASS

Tuff Rib



*Available in 5 oz. white
Lengths: 24' only*

Product Part #: AFGTR5W

Product Units & Weight: linear foot / 1.20lbs per foot

PBR

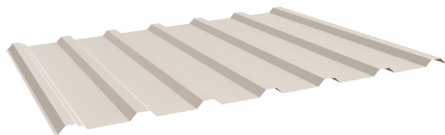


*Available in 8 oz. white
Lengths: 10'8", 12', 16'*

Product Part #: AFGPBR8W

Product Units & Weight: linear foot / 1.70lbs per foot

GR-7™



*Available in 5 oz. white
Lengths: 24'*

Product Part #: AFGGR75W

Product Units & Weight: linear foot / 1.20lbs per foot

2-1/2" Corrugated



*Available in 8 oz. white
Length: 12'*

Product Part #: AFG2C5W

Product Units & Weight: linear foot / 1.20lbs per foot

Classic 7/8" Corrugated™



*Available in 8 oz. frost
Length: 12'*

Product Part #: AFGCC8F

Product Units & Weight: linear foot / 1.70lbs per foot

MISCELLANEOUS

Kynar Touch Up Paint Pen



Standard Kynar 500® Colors: Glacier White, Zinc Grey, Sterling Grey, Charcoal Grey, Tile Red, Black, Forest Green, Weathered Zinc, Medium Bronze, Dark Bronze, Pacific Blue, Pine Green, Sage Green, Sandstone, Saddle Tan, Stone White, Tahoe Blue, Clear, Matte Black

**Other colors special order at 25 pens minimum*

Product Part #: APP

Product Units & Weight: 1.49lbs per box / 0.50lbs per pen

16oz Spray Can Paint (Industrial Enamel)



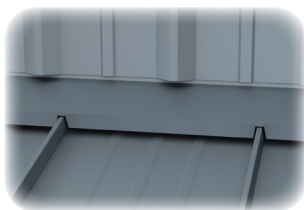
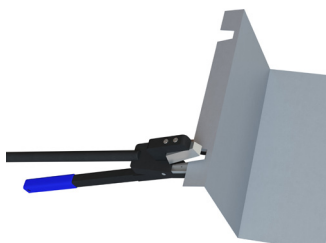
Do not apply directly onto panel - Shake well and spray into a small container. Apply to scratch with a fine brush or toothpick, just filling in the scratch

**Verify paint type*

Product Part #: APSC

Product Units & Weight: 10.77lbs per box / 1.00lbs per can

Notching Tool for Easy-Lock™ Standing Seam



Product Part #: ANOTCH

Product Units & Weight: Each / 2.54lbs per tool

Upending Tool



Used to fold panel up to create a dam or fold panel down to notch. All upenders 1" and below are used for notching. All upenders above 1" are used for upending/creating a dam.

Sizes: 1/2"x11", 1"x11", 1-3/4"x11", 2"x11", 1-3/4"x13", 2"x13", 1/2"x15", 1"x15", 1-1/2"x15", 1"x17", 1-3/4"x17", 2"x17", 1"x18", 1-1/2"x19", 1"x19"

Product Part #: AUPEND

Product Units & Weight: Each / Weight varies by size

MISCELLANEOUS

MS150™ ESE Hand Crimper (Single Lock)

Product Part #: ACRIMPER150S

Product Units & Weight: Each / 3.00lbs



MS200™ ESE Hand Crimper (Single Lock)

Product Part #: ACRIMPER200S

Product Units & Weight: Each / 3.00lbs



MS150™ Crimper Combo

Product Part #: ACRIMPER150COMBO

Product Units & Weight: Each / 10.45lbs



MS200™ Crimper Combo

Product Part #: ACRIMPER200COMBO

Product Units & Weight: Each / 3.00lbs



DOOR TRACK HARDWARE

For more information on our Door Track Accessories, please visit here: taylormetal.com/accessories/

7" Jamb Latch



Zinc plated steel construction and adjustable design. Holds door firmly against jamb. Can be used for either right or left handed application.

TMP # - H7JL / CNB # - 715432

Product Units & Weight: 1.22lbs each

Gate, Stall and Door Latch

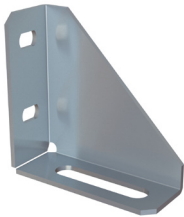


Guides the door along the building, reduces the amount of door sway.

TMP # - HGSDL / CNB # - 710586

Product Units & Weight: 1.48lbs each

Adj. Single Bracket for Bolt Hung



Angled track bracket used to mount Studmount Key-Hole Track. The single track bracket is used to mount a single run of track. Brackets should be placed every two feet.

TMP # - HSB / CNB # - 712138

Product Units & Weight: 0.64lbs each

Adj. Double Bracket for Bolt Hung



Angled track bracket used to mount Studmount Key-Hole Track. The double track bracket is used to mount a double run of track. Brackets should be placed every two feet.

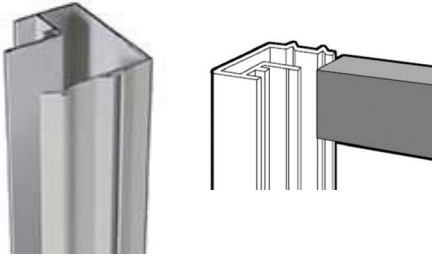
TMP # - HDB / CNB # - 712137

Product Units & Weight: 1.34lbs each

DOOR TRACK HARDWARE

For more information on our Door Track Accessories, please visit here: taylormetal.com/accessories/

(200B) Side Rail



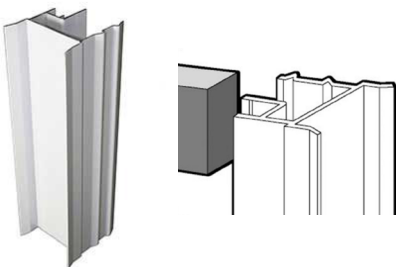
8'	TMP # - HDKSR8	CNB # - 724300	6.08lbs
10'	HDKSR10	724304	7.60lbs
12'	HDKSR12	724308	9.12lbs
14'	HDKSR14	724312	10.64lbs
16'	HDKSR16	724316	12.16lbs
20'	HDKSR20	724740	15.20lbs

(244) Bottom Rail



10'	TMP # - HDKBR10	CNB # - 724564	10.0lbs
12'	HDKBR12	724565	12.0lbs
16'	HDKBR16	724567	16.0lbs

(216B) Double Couple



10'	TMP # - HDKDC10	CNB # - 724324	9.0lbs
12'	HDKDC12	724328	10.80lbs
14'	HDKDC14	724332	12.60lbs
16'	HDKDC16	724336	14.40lbs

Steel Horizontal Girt



Provides horizontal support on sliding door frames. Overall thickness of steel girt is 3-1/2" x 2".

*Available in 16', 20' and 24' lengths

TMP # - HDKSH / CNB # - (16') 724861, (20') 724862, (24') 713854

Product Units & Weight: 1.3lbs per linear foot

DOOR TRACK HARDWARE

For more information on our Door Track Accessories, please visit here: taylormetal.com/accessories/

Double Door Stop/Guide

Reduces the amount of door sway, helps prevent wind damage and provides easier door operation.



Product Part #: HDSG

Product Units & Weight: 1.90lbs each

Offset Adj Stay Roller

Adjusts for doors from 5/16" to 3-5/8". Mounting holes countersunk to protect door finish. 8 gauge zinc plated steel with black 2" diameter non-marring roller.



TMP # - HOASR / CNB # - 710806

Product Units & Weight: 1.31lbs each

VR Door Stop

Zinc plated steel construction and made from 11-gauge steel. Adjusts for doors 3" to 4-1/2". Guides the door along the building, reduces the amount of door sway.



TMP # - HVRDS / CNB # - 715432

Product Units & Weight: 1.32lbs each

Jumbo Door Pull

Assists with door opening and closing; a handle attached to door panels.



White Jumbo
Door Pull

TMP # - HJDP

CNB # - 710654

0.35lbs

Galvanized Jumbo
Door Pull

HJDP-GA

710653

0.33lbs

DOOR TRACK HARDWARE

For more information on our Door Track Accessories, please visit here: taylormetal.com/accessories/

Lag Bolt



The 3/8" x 2" bolt is typically used with the Studmount. The 5/16" x 1-1/2" bolt is typically used with the Facemount.

3/8" x 2"	HLAG	0.05lbs
5/16" x 1-1/2"	HLAG516	0.03lbs

Metal Center Snugger



Prevents door panels from moving or rattling when closed and tightens as the door moves.

TMP # - HMCS / CNB # - 711200
Product Units & Weight: 2.06lbs each

Delrin 9-1/2" Pendant Trolley Bagged Pair



Ideal for framed door panel projects, used with key-hole track system. Four-way offset adjustable pendant bolt for doors not weighing more than 600lbs.

TMP # - HPT / CNB # - 713999
Product Units & Weight: 3.80lbs each

Delrin Adj Strap Trolley Bagged Pair



Are attached to the front face of wood panel doors, with bolts that go through the panel for a solid hold. Wood doors can be up to 1-1/2" thick and not weighing more than 600lbs.

TMP # - HST / CNB # - 715608
Product Units & Weight: 5.16lbs each

DOOR TRACK HARDWARE

For more information on our Door Track Accessories, please visit here: taylormetal.com/accessories/

Keyhole Track Facemount - 2lbs per foot



8' Keyhole	TMP # - HRTF8	CNB # - 643836
10' Keyhole	HRTF10	643837
12' Keyhole	HRTF12	711061
16' Keyhole	HRTF16	711063
20' Keyhole	HRTF20	711065
22' Keyhole	HRTF22	
24' Keyhole	HRTF24	

Keyhole Track Studmount - 2lbs per foot



8' Keyhole	TMP # - HRTS8	CNB # - 643836
10' Keyhole	HRTS10	643837
12' Keyhole	HRTS12	711061
16' Keyhole	HRTS16	711063
20' Keyhole	HRTS20	711065
22' Keyhole	HRTS22	
24' Keyhole	HRTS24	

End Caps, Bagged Pair



Attaches to open ends of track, preventing birds from nesting as well as dirt and debris build-up.

TMP # - HEC / CNB # - 711489
Product Units & Weight: 0.38lbs each

Splice Collar



Galvanized collar that combines two pieces of Keyhole track. Features locking lugs to hold track firmly in place and prevent rotating.

TMP # - HSPLICE / CNB # - 465101
Product Units & Weight: 0.50lbs each

DOOR TRACK HARDWARE

For more information on our Door Track Accessories, please visit here: taylormetal.com/accessories/

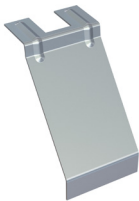
Adj. Flashing Retainer (DILB)



This Adjustable Flashing Retainer (DILB) is used in conjunction with both the Single and Double Track Brackets to enhance the ability of using a track cover. Should be placed every two feet.

TMP # - HDILB / CNB # - 712136
Product Units & Weight: 0.28lbs each

Flashing Bracket (SILB)



A unique bracket design for use with Facemount Keyhole Track. Bracket installs in slots of facemount brackets after installation of track.

TMP # - HSILB / CNB # - 714777
Product Units & Weight: Box 50pc / 15.90lbs per box / 0.32lbs each

Center Door Guide / Stop



*Center Door Guide/Stop
(Floor Mt)*

*Guides the door along the building,
reduces the amount of door sway.*

TMP # - HCDGSF / CNB # - 711271
Box 1pc. / 7.31lbs each



*Center Door Guide/Stop
(Post Mt)*

*Guides the door along the building,
reduces the amount of door sway.*

TMP # - HCDGSP / CNB # - 714359
Box 4pc. / 21.37lbs per box / 5.21lbs each



TAYLOR

METAL PRODUCTS

QUALITY PRODUCTS EXCEPTIONAL SERVICE

SALEM BRANCH

4566 Ridge Dr. NE
Salem, OR 97301

Office: 503-581-8338
Toll Free: 1-800-574-1388
Fax: 503-581-6877

SACRAMENTO BRANCH

3443 Airport Rd
Sacramento, CA 95834

Office: 916-318-8844
Toll Free: 1-800-574-1388
Fax: 916-993-4123

SPOKANE BRANCH

1010 N Nelson St.,
Spokane, WA 99202
www.go-rsp.com

Office: 509-535-8667
Toll Free: 800-238-4057
Fax: 509-535-8682

AUBURN BRANCH

2601 C St SW,
Auburn, WA 98001

Office: 206-900-9923
Toll Free: 1-800-574-1388
Fax: 253-804-3545

RIVERSIDE BRANCH

4880 Felspar St.
Riverside, CA 92509

Office: 323-407-7457
Toll Free: 1-877-504-1594