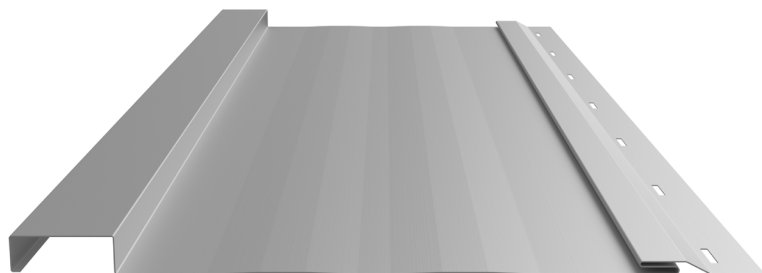




ICC
EVALUATION
SERVICE®

ICC-ES EVALUATION REPORT #5045 with CBC-CRC Supplement (Coming 2026)

12" and 16" coverage options

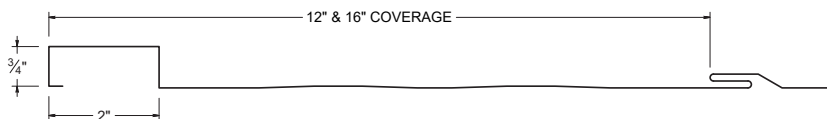


Lightly Striated (Standard)



Board & Batten Wall Example


SCREW FLANGE ATTACHMENT



KEY FEATURES

- 12" or 16" panel coverage
- 26, 24 & 22 Tru-Gauge™. Screw Flange attachment available
- 3/4" deep panel
- 2" width batten
- Panel options: Lightly Striated (*standard*), Flat Pan available (*please inquire - installation is recommended over solid sheathing with 5/8" backer rod at mid-point of pan to mitigate visual effects of "oil canning"*)
- Slotted screw flange - allows for expansion and contraction
- 2 ft. to 35 ft (*for longer lengths, please inquire*)
- Vertical or Horizontal Wall Application
- Acceptable for use as a soffit panel
- 1" Slot on screw flange - allows 1/2" movement in each direction

TESTING (Coming 2026)

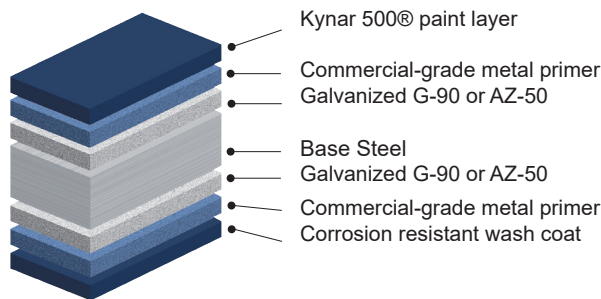
-  ICC-ESR #5045 with CBC-CRC Supplement
- ASTM A653/A924 - G90 Galvanized
- ASTM A792 - Zincalume/Galvalume AZ-50/55
- ASTM B209 - Aluminum Substrate

MATERIAL SPECIFICATIONS

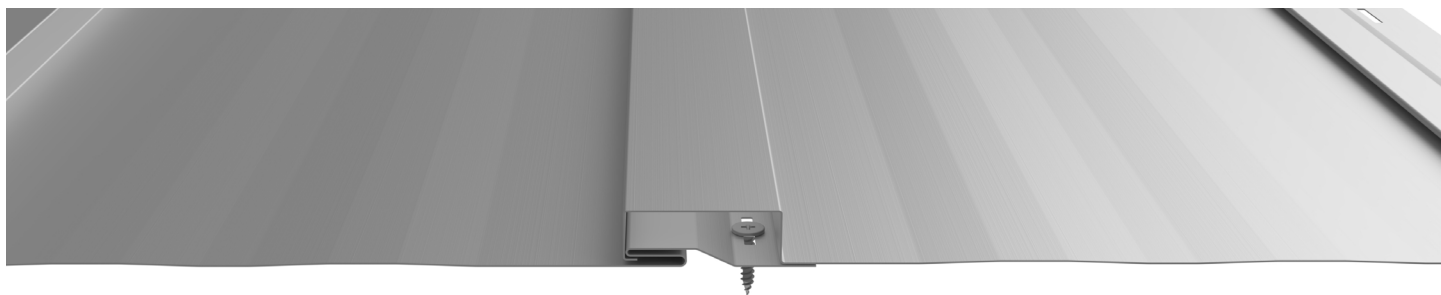
- 26 Tru-Gauge™ ArmorTech™ Painted Steel Galvanized G-90 or Zinalume® Plus AZ-50
- 26 Tru-Gauge™ Kynar 500® Painted Steel Galvanized G-90 or AZ-50 Zinalume®
- 24 Tru-Gauge™ Kynar 500® Painted Steel Galvanized G-90 or AZ-50 Zinalume®
- 24 & 22 Tru-Gauge™ Zinalume® Plus
(No finish warranty – 25 yr. perforation warranty)
- ▲ 22 gauge Kynar 500® Painted Steel G-90 Galvanized or AZ-50
- 16 and 20 oz. Copper
- Kynar 500® and substrate testing data available (See website)
- .8mm and 1.0mm True Zinc on special request (please inquire)

FINISHES

- 20 Standard Kynar 500® Colors, 3 Metallic Colors, 1 Premium Color and 3 Weathering Materials
- Kynar 500® Paint System - the ultimate in exterior durability and color retention
- "Cool" color pigments are specially designed to reflect infrared light, reducing heat gain to dwelling, and conform with ENERGY STAR® criteria
- Superior quality, two coat, 70% resin finish, applied at a 1 mil. thickness
- 20 Standard ArmorTech™ colors, Zinalume® Plus and Galvanized ArmorTech™ Paint System – excellent in exterior durability
- Superior quality, two coat SMP resin system at 1 mil. thickness
- 40 year residential paint warranty
- 20 and 30 year commercial paint warranty: Contact your sales rep. for warranty specifications
- "Oil Canning" is an inherent characteristics of roof and wall products, and not a defect, which is not a cause for panel rejection.



PANEL ATTACHMENT



Fastener Notes:

- When possible, lap panels away from prevailing wind direction.
- Panel screws should be long enough to penetrate through the bottom of the plywood by 3/8".
- For dimensional lumber, panel screws should penetrate the lumber 1".
- All trim screws used for roof or wall applications should have EPDM sealing washers.
- Clean off working area each day to remove metal particles left from drilling fasteners. These particles, when exposed to moisture, will form rust between metal particles and the panel.