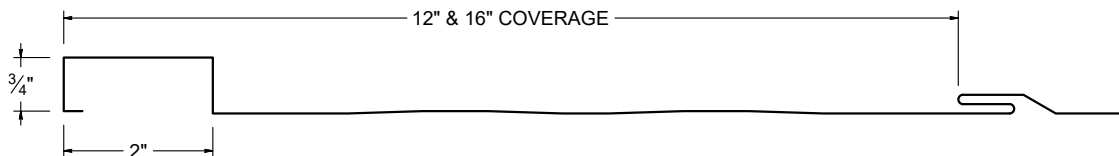




ICC-ES EVALUATION REPORT #5045 with CBC-CRC Supplement (Coming 2025)


SCREW FLANGE ATTACHMENT



KEY FEATURES

- 12" or 16" panel coverage
- 26, 24 & 22 Tru-Gauge™. Screw Flange attachment available
- 3/4" deep panel
- 2" width batten
- Panel options: Lightly Striated (*standard*), Flat Pan available (*please inquire - installation is recommended over solid sheathing with 5/8" backer rod at mid-point of pan to mitigate visual effects of "oil canning"*)
- Slotted screw flange - allows for expansion and contraction
- 2 ft. to 35 ft (*for longer lengths, please inquire*)
- Vertical or Horizontal Wall Application
- Acceptable for use as a soffit panel
- 1" Slot on screw flange - allows 1/2" movement in each direction

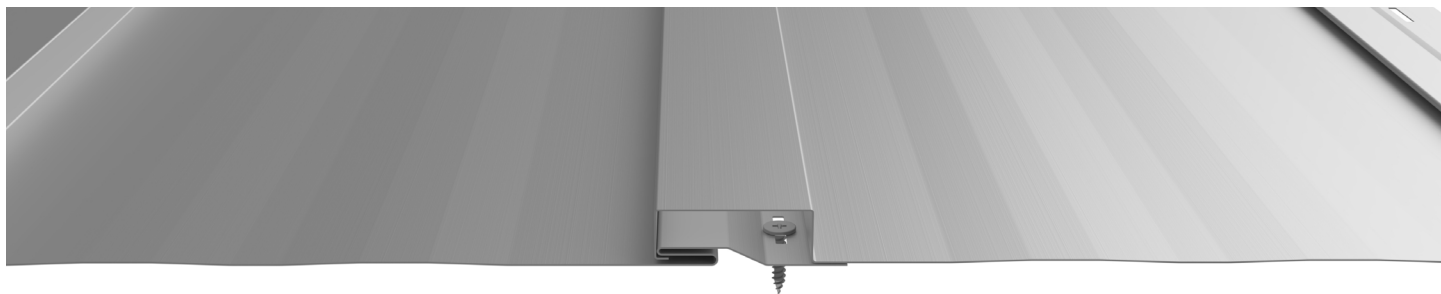
TESTING (Coming 2025)

-  ICC-ESR #5045 with CBC-CRC Supplement
- ASTM A653/A924 - G90 Galvanized
- ASTM A792 - Zincalume/Galvalume AZ-50/55
- ASTM B209 - Aluminum Substrate

WEIGHT CHART

Board & Batten	TYPE	26 GA STEEL	24 GA STEEL	.032 ALUM
THICKNESS		0.020"	0.0236"	0.032"
WEIGHT/LINFT	SCREW FLANGE	1.485 LBS	1.752 LBS	0.830 LBS
WEIGHT/LSQFT	SCREW FLANGE	1.114 LBS	1.314 LBS	0.623 LBS

PANEL ATTACHMENT



Fastener Notes:

- When possible, lap panels away from prevailing wind direction.
- 15/32" OSB: #10 Burr Buster fasteners.
- 15/32" Plywood: #10 GP fastener. Screws should be long enough to penetrate through the bottom of the plywood by 3/8".
- Dimensional lumber: #10 GP. Screws should penetrate the lumber 1".
- 16ga (or less) Steel furring: #10 or #12 fastener with DP-1.
- All trim screws used for roof or wall applications should have EPDM sealing washers.

Rev. Date 09-25