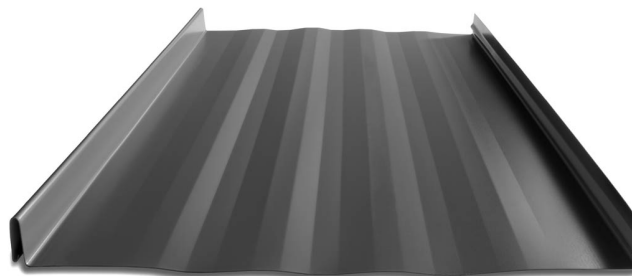
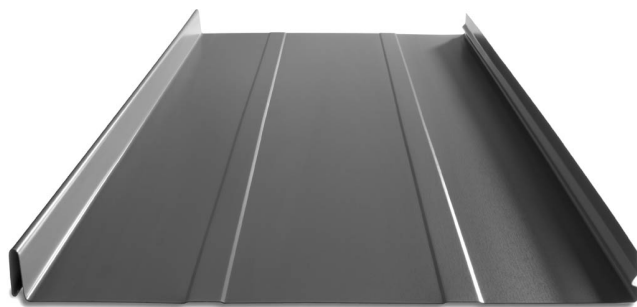


FLAT PAN

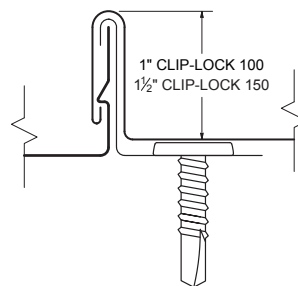


STRIATIONS



ACCENT RIBS
2 Ribs available



SEAM DETAIL



KEY FEATURES

- Standard widths for Clip-Lock 100 are 13" or 17"
Standard width for Clip-Lock 150 is 15.5"
(Please inquire for other coverage options)
- 24 and 22 gauge steel and .032" and .040" Aluminum
- Factory notched & tabbed panels available
- Clip system: allows for expansion/contraction of panels in longer lengths
- Clip-Lock 100 – 1" rib height
- Clip-Lock 150 – 1-1/2" rib height
- Concealed fastener system
- 3:12 minimum pitch recommended
(For lower pitches, please inquire)
- Standard panel lengths 3' to 50'
(For longer panels, please inquire)
- Panel options: Striations, Accent Ribs, and Flat Pan
- Manufactured in Sacramento and Riverside, CA

TESTING

-  ICC EVALUATION SERVICE™ ICC #5046 with CBC-CRC Supplement
-  Code compliance UL Evaluation Report UL ER #25913-01 (1-1/2" Only)
- UL Construction No. 589 (1-1/2" Only)
- UL 580 Class 90 - Wind Uplift
- UL 790 Class A (ASTM E108) - Fire rated
- UL 2218 Class 4 - Impact (hail) rated
- ASTM A653/A924 - G90 Galvanized
- ASTM A792 - Zincalume/Galvalume AZ-50/55
- ASTM B209 - Aluminum Substrate
- ASTM E2886 - Ember Resistant ridge/endwall/peak flashings available



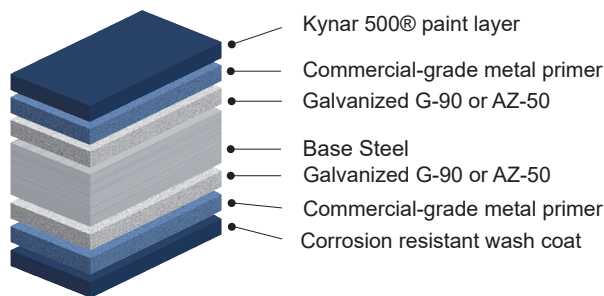
The Clip-Lock™ Standing Seam delivers a panel with strong clean continuous grace, together with unequaled quality. This provides you a weather tight roof to last a lifetime. Clip system allows for extremely long panels, without the need for laps.

MATERIAL SPECIFICATIONS

- 24 Tru-Gauge™ Kynar 500® Painted Steel
- ▲ 22 Tru-Gauge™ Kynar 500® Painted Steel
- ◆ .032" Kynar 500® Painted Aluminum
- 24 Tru-Gauge™ G-90 Galvanized or AZ-50
- 24 and 22 Tru-Gauge™ bare Zinalume® Plus AZ-55 (No finish warranty – 25 yr. perforation warranty)
- G-90 Galvanized or AZ-50
- .032" & .040" Kynar 500® Painted Aluminum (please inquire)
- 24 Tru-Gauge™ Bonderized
- 16 OZ & 20 OZ Real Copper (please inquire)
- Kynar 500® and substrate testing data available (See website)
- PVDF is a fluoropolymer that is manufactured under the trademarked names Kynar 500® and Duranar®(PPG). Paint finishes containing a minimum 70% PVDF resin meet the high-performance weathering criteria established by the American Architectural Manufacturing Association and are allowed to carry the Kynar500® trademarked name. Zinalume & Zinalume® Plus are registered trademarks of Bluescope Ltd. Galvalume® is a registered trademark of BIEC International, Inc. Vintage® is a registered trademark of Steelscape, Inc. Kynar® and Kynar 500® is a registered trademarks of Arkema, Inc.

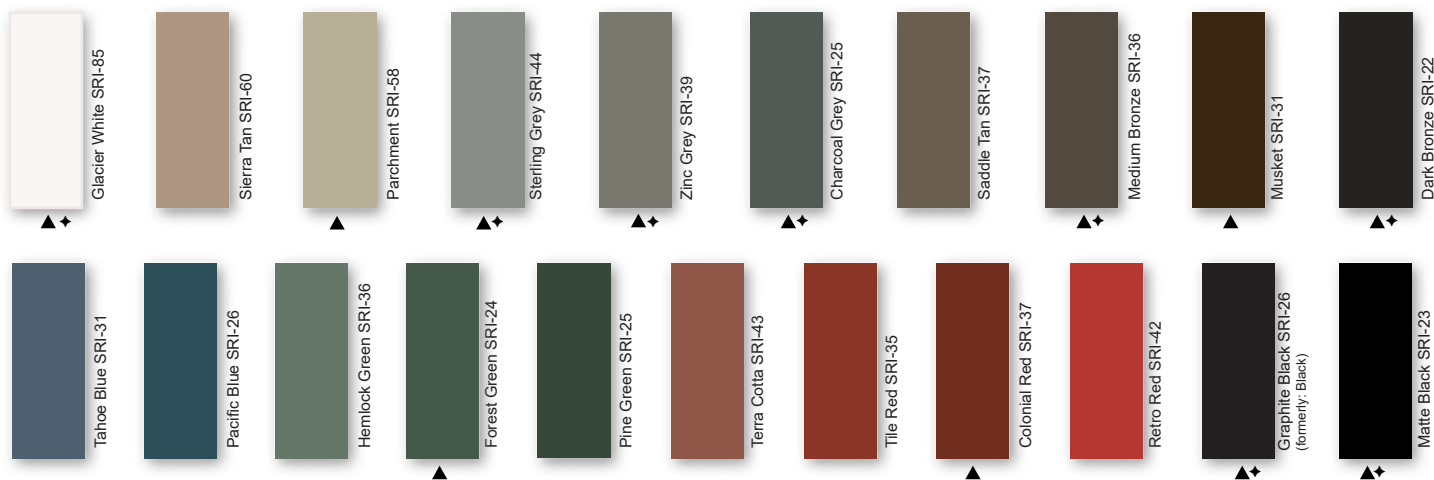
FINISHES

- 21 Standard Colors, 5 Metallic Colors and 4 Specialized Colors
- Kynar 500® Paint System - the ultimate in exterior durability and color retention
- “Cool” color pigments are specially designed to reflect infrared light, reducing heat gain to dwelling, and conform with ENERGY STAR® criteria
- Superior quality, two coat, 70% resin finish, applied at a 1 mil. thickness
- 40 year residential paint warranty
- 20 and 30 year commercial paint warranty: Contact TMP for warranty specifications
- “Oil Canning” is an inherent characteristic of roof and wall products, and not a defect, which is not a cause for panel rejection

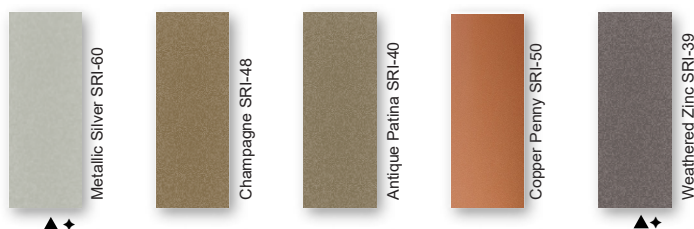


STANDARD COOL KYNAR 500® COLORS

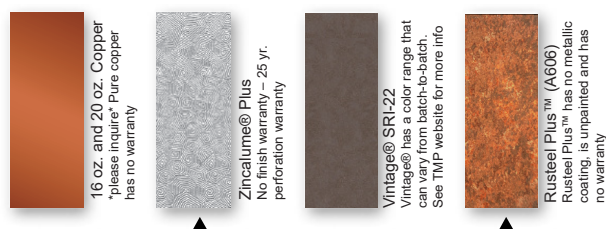
▲ 22 Tru-Gauge™ ◆ .032 Aluminum



PREMIUM METALLIC COOL KYNAR® COLORS



SPECIALIZED MATERIAL



These printed chips provide a close representation of the colors.

Metal samples are available upon request. Coatings are low gloss 10-15% sheen.
SRI = Solar Reflective Index. SRI values listed above are in accordance with ASTM E 1980 and are based on actual testing. ***Oil canning is not a cause for material rejection***



Rev. Date 11-25