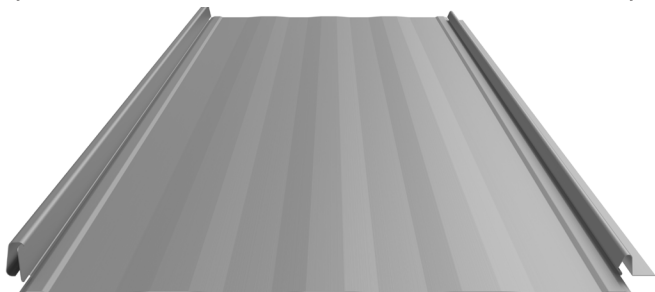
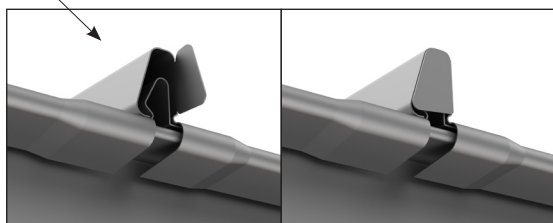


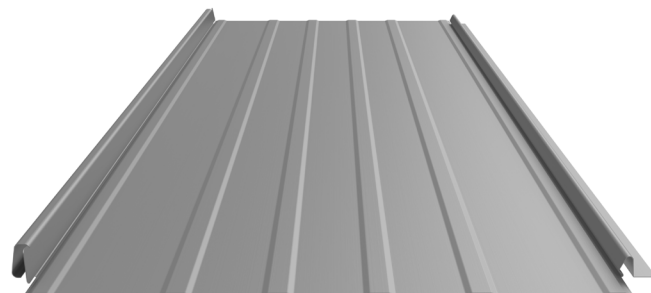
12" and 16" coverage options



STRIATIONS WITH SCREW CONCEALER



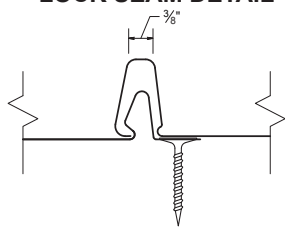
Tabbing feature can help minimize debris from entering in between seams, and gives a more finished appearance.



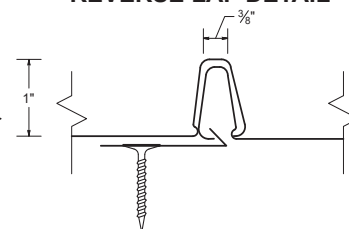
ACCENT RIBS WITH SCREW CONCEALER

3 Accent ribs for 12" panel
4 Accent ribs for 16" panel
(16" panel shown)

LOCK SEAM DETAIL




REVERSE LAP DETAIL



KEY FEATURES

- 12" and 16" coverage options
- 26, 24 & 22 Tru-Gauge™ and .032" Aluminum
- 16 & 20 oz. Copper (*Please inquire*)
- Factory-notched and tabbed panels available
- Vertical interlocking application: allows installation from both directions starting at any location
- Patented no-siphon lock seam
- 1" vertical rib with 3/8" flat top for ease of flashing attachment
- Concealed fasteners: fasteners cannot leak
- Pre-slotted fastener flange: allows expansion & contraction of panel (high wind clips available for panel lengths over 35')
- 3:12 minimum pitch recommended (*For lower pitches, please inquire*)
- Standard panel lengths 4' to 35' - not notched
Standard panel lengths 1' to 35' - notched (*For longer panels, please inquire*)
- Panel options: Striations, Accent Ribs, and Flat Pan
- Manufactured in Salem OR, Auburn WA, Sacramento CA and Riverside

TESTING

-  Code compliance UL Evaluation Report UL ER #25913-01
- UL Construction No. 529
- UL 580 Class 90 - Wind Uplift
- UL 790 Class A (ASTM E108) - Fire rated
- UL 2218 Class 4 - Impact (hail) rated
- ASTM A653/A924 - G90 Galvanized
- ASTM A792 - Zincalume/Galvalume AZ-50/55
- ASTM B209 - Aluminum Substrate
- ASTM E2886 - Ember Resistant ridge/endwall/peak flashings available



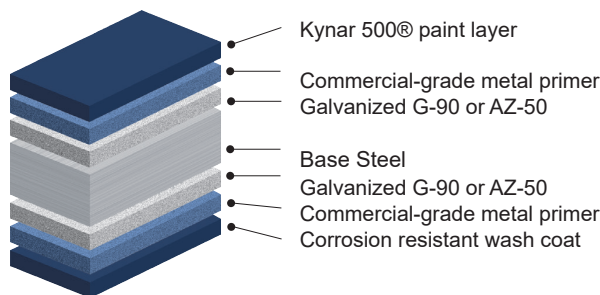
The Easy-Lock™ Standing Seam is the only metal roofing panel with a patented no-siphon dry lock seam, with a unique reversing feature to allow installation of panels from both directions starting at any location. The panel is designed with softer, less industrial lines to provide an architecturally pleasing appearance.

MATERIAL SPECIFICATIONS

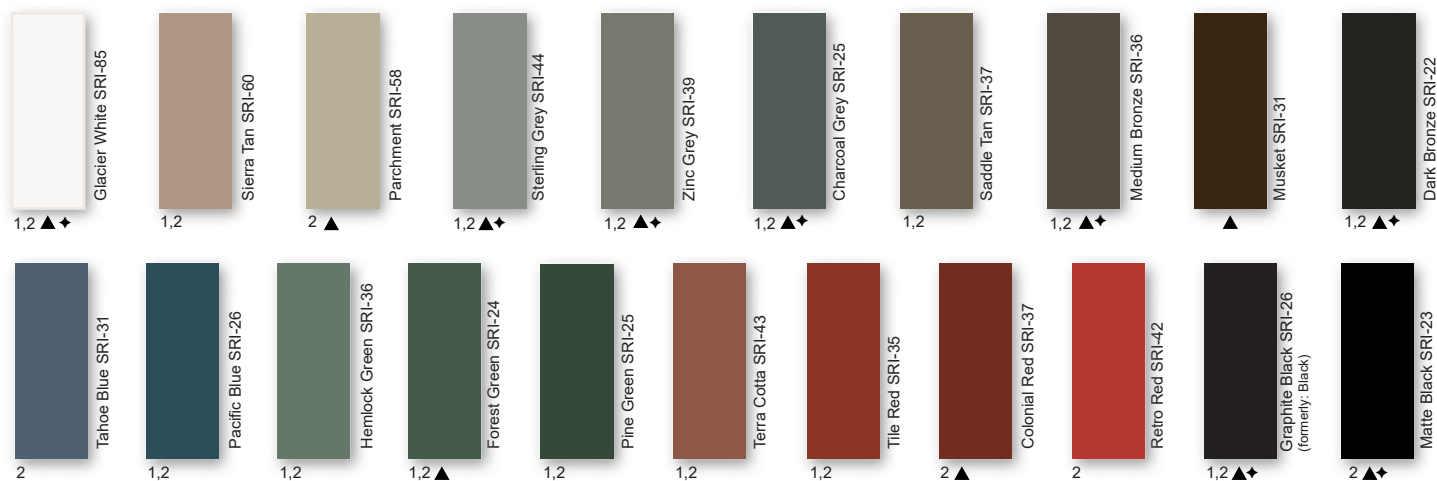
- ▲22 Tru-Gauge™ Kynar 500® Painted Steel
- ◆.032" Kynar 500® Painted Aluminum
- 26 gauge Kynar 500® Painted Steel
G-90 Galvanized or AZ-50
- 24 gauge Kynar 500® Painted Steel
G-90 Galvanized or AZ-50
- 24 & 22 gauge Zincolume® Plus AZ-55
(No finish warranty – 25 yr. perforation warranty)
- 22 gauge Rusteel Plus™ (A606)
- 16 OZ & 20 OZ Real Copper (please inquire)
- Kynar 500® and substrate testing data available
(See website)
- PVDF is a fluoropolymer that is manufactured under the trademarked names Kynar 500® and Duranar®(PPG). Paint finishes containing a minimum 70% PVDF resin meet the high-performance weathering criteria established by the American Architectural Manufacturing Association and are allowed to carry the Kynar500® trademarked name. Zincolume & Zincolume® Plus are registered trademarks of Bluescope Ltd. Galvalume® is a registered trademark of BIEC International, Inc. Vintage® is a registered trademark of Steelscape, Inc. Kynar® and Kynar 500® is a registered trademarks of Arkema, Inc.

FINISHES

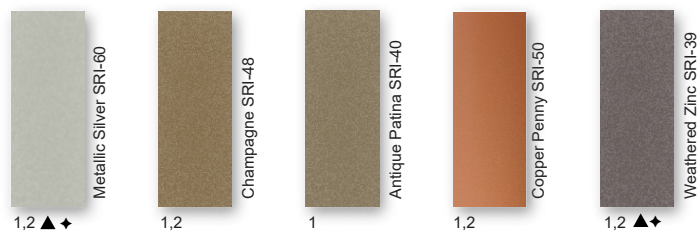
- 21 Standard Colors, 5 Metallic Colors and 4 Specialized Materials
- Kynar 500® Paint System - the ultimate in exterior durability and color retention
- “Cool” color pigments are specially designed to reflect infrared light, reducing heat gain to dwelling, and conform with ENERGY STAR® criteria
- Superior quality, two coat, 70% resin finish, applied at a 1 mil. thickness
- 40 year residential paint warranty
- 20 and 30 year commercial paint warranty: Contact your sales rep. for warranty specifications



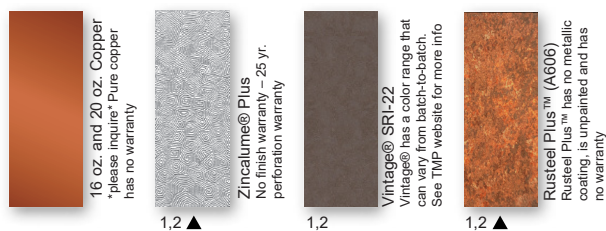
STANDARD COOL KYNAR 500® COLORS



PREMIUM METALLIC COOL KYNAR® COLORS



SPECIALIZED MATERIAL



These printed chips provide a close representation of the colors.

Metal samples are available upon request. Coatings are low gloss 10-15% sheen.
SRI = Solar Reflective Index. SRI values listed above are in accordance with ASTM E 1980 and are based on actual testing. ***Oil canning is not a cause for material rejection***

