


KEY FEATURES

- 12" and 16" panel coverage
- 24 ga. Tru-Gauge™ steel and .032" aluminum panels are standard (Attached with a high-performance convealed clip and may be available with an integrated screw flange -- please inquire).
- High performance clips must be used for the following options:
 - 22 ga. steel and .040" aluminum
 - Custom 20 ga. & 18 ga. steel and .050" & .063" aluminum
- 2' to 20'10" panel lengths. For longer lengths-Inquire
- Custom profiles available
- Vertical or Horizontal Wall Application
- Acceptable for use as a soffit panel
- Interchangeable panel widths and configurations
- Manufactured in Salem, Sacramento, and Riverside
- Perforated options available (please inquire)

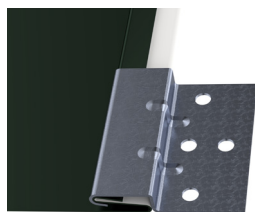
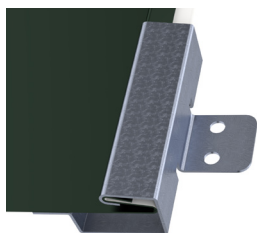
TESTING

-  ICC-ESR #5045 with CBC-CRC Supplement*
- ASTM E1680 - Air infiltration (roof)
- ASTM E1646 - Water infiltration (roof)
- ASTM E1592 - Negative structural uniform static air pressure
- ASTM E331 - Water infiltration (wall)
- ASTM E283 - Air infiltration (wall)
- ASTM A653/A924 - G90 Galvanized
- ASTM A792 - Zincalume/Galvalume AZ-50/55
- ASTM B209 - Aluminum Substrate

PANEL ATTACHMENT CLIP (SCREW FLANGE OPTION- Inquire)

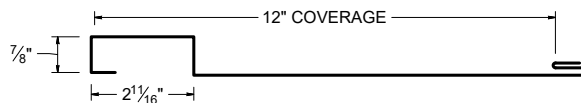
STANDOFF CLIP

STANDARD CLIP

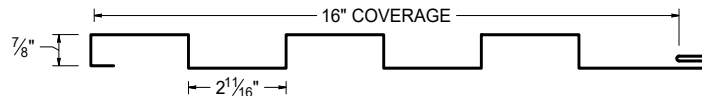


Panel Profiles

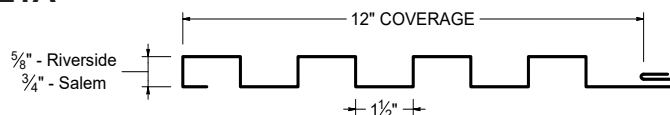
CT-1



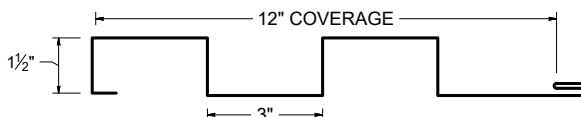
CT-2



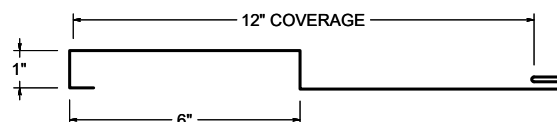
C-META



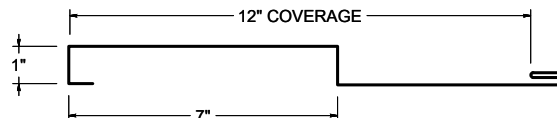
CT-3



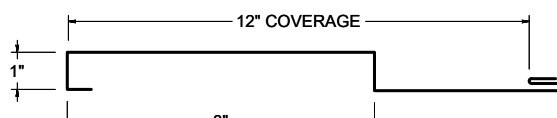
CT-4



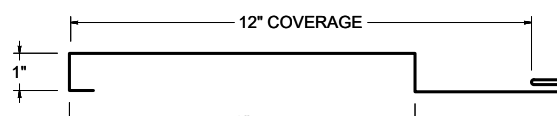
CT-5



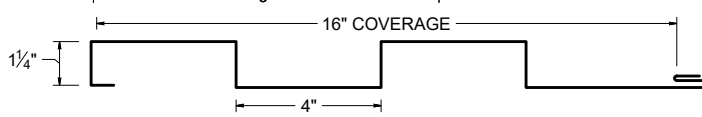
CT-6



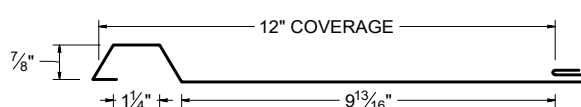
CT-7



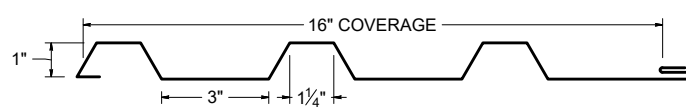
CT-8



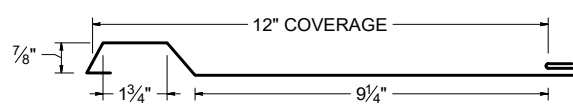
CT-9



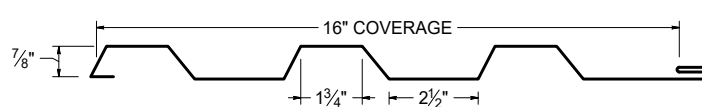
CT-10



CT-11



CT-12

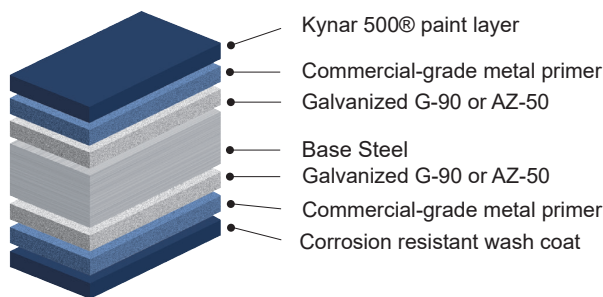


MATERIAL SPECIFICATIONS

- 24 Tru-Gauge™ Kynar 500® Painted Steel
- ▲ 22 Tru-Gauge™ Kynar 500® Painted Steel
- ♦ .032" Kynar 500® Painted Aluminum
- 24 Tru-Gauge™ G-90 Galvanized or AZ-50
- 24 and 22 Tru-Gauge™ bare Zincolume® Plus AZ-55
(No finish warranty – 25 yr. perforation warranty)
- G-90 Galvanized or AZ-50
- .040" Kynar 500® Painted Aluminum (please inquire)
- 24 Tru-Gauge™ Bonderized
- 22 gauge Rusteel Plus™ (A606)
- Custom 20 & 18 Tru-Gauge™ and .050" and .063" Aluminum (please inquire)
- 16 OZ & 20 OZ Real Copper
- Kynar 500® and substrate testing data available
(See website)

FINISHES

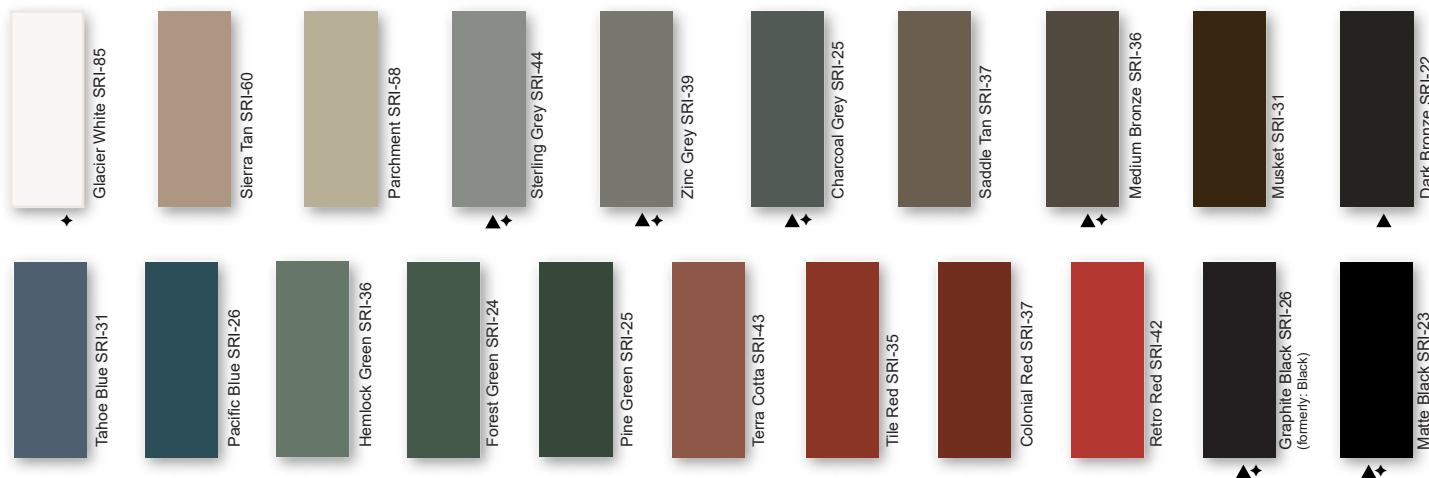
- 21 Standard Colors, 5 Metallic Colors and 4 Specialized Colors
- Kynar 500® Paint System - the ultimate in exterior durability and color retention
- "Cool" color pigments are specially designed to reflect infrared light, reducing heat gain to dwelling, and conform with ENERGY STAR® criteria
- Superior quality, two coat, 70% resin finish, applied at a 1 mil. thickness
- 40 year residential paint warranty
- 20 and 30 year commercial paint warranty: Contact TMP for warranty specifications
- "Oil Canning" is an inherent characteristic of roof and wall products, and not a defect, which is not a cause for panel rejection



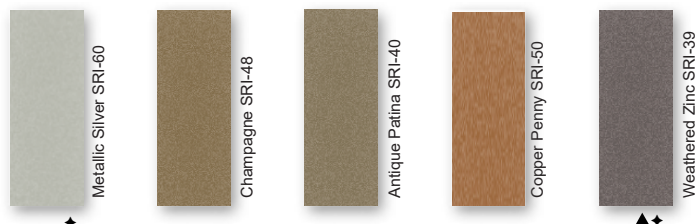
STANDARD COOL KYNAR 500® COLORS

▲ 22 Tru-Gauge™

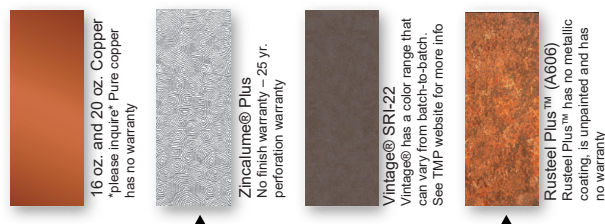
♦ .032 Aluminum



PREMIUM METALLIC COOL KYNAR® COLORS



SPECIALIZED MATERIAL



These printed chips provide a close representation of the colors.

Metal samples are available upon request. Coatings are low gloss 10-15% sheen.
SRI = Solar Reflective Index. SRI values listed above are in accordance with ASTM E 1890 and are based on actual testing. ***Oil canning is not a cause for material rejection***



Rev. Date 11-25