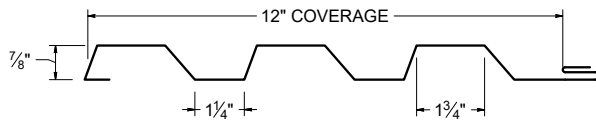




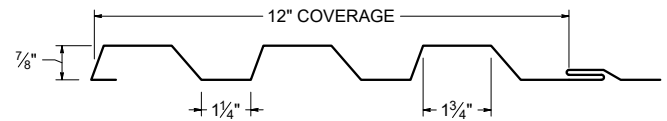
ICC
EVALUATION
SERVICE®

ICC-ES EVALUATION REPORT #5045 with CBC-CRC Supplement

CLIP ATTACHMENT

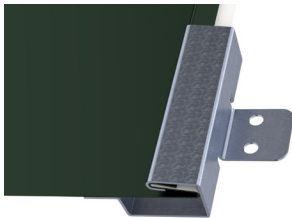


SCREW FLANGE ATTACHMENT

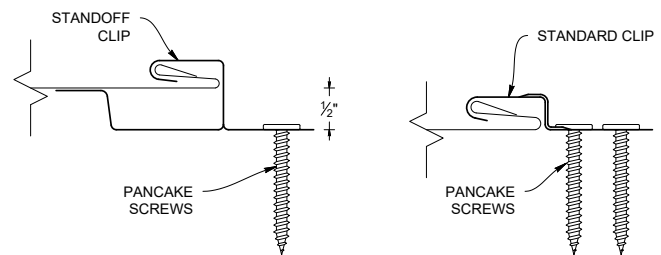
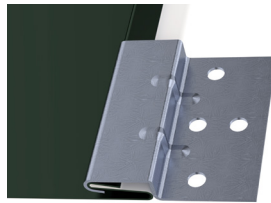


PANEL ATTACHMENT CLIP

STANDOFF CLIP




STANDARD CLIP



KEY FEATURES

- 12" panel coverage
- 24 ga. Tru-Gauge™ steel and .032" aluminum panels are standard (Attached with a high-performance clip and may be available with an integrated screw flange -- please inquire)
- High performance clips must be used for the following options:
 - 22 ga. steel and .040" aluminum
 - Custom 20 ga. & 18 ga. and .050" & .063" aluminum
- 3' to 20'10" panel lengths. *For longer lengths- Inquire*
- Custom profiles available
- Vertical or Horizontal Wall Application
- Acceptable for use as a soffit panel
- Interchangeable panel widths and configurations
- Manufactured in Salem, OR, Sacramento, CA and Riverside, CA
- Perforated options available (please inquire)

TESTING

-  ICC-ESR #5045 with CBC-CRC Supplement
- ASTM E331 - Water infiltration (wall)
- ASTM E283 - Air infiltration (wall)
- ASTM E1592 - Negative structural uniform static air pressure
- ASTM E1680 - Air infiltration (roof)
- ASTM E1646 - Water infiltration (roof)
- ASTM A653/A924 - G90 Galvanized
- ASTM A792 - ZINCALUME®/Galvalume AZ-50/55
- ASTM B209 - Aluminum Substrate

WEIGHT CHART

CI-2-12	TYPE	24 GA STEEL	22 GA STEEL	.032 ALUM	.040 ALUM
THICKNESS		0.0236"	0.0285"	0.032"	0.040"
WEIGHT/LINFT	CLIP ATTACH	1.445 LBS	1.700 LBS	0.687 LBS	0.833 LBS
WEIGHT/LSQFT	CLIP ATTACH	1.445 LBS	1.700 LBS	0.687 LBS	0.833 LBS
WEIGHT/LINFT	SCREW FLANGE	1.590 LBS	1.980 LBS	0.753 LBS	0.971 LBS
WEIGHT/LSQFT	SCREW FLANGE	1.590 LBS	1.980 LBS	0.753 LBS	0.971 LBS

ASTM E 1680/E283 Air Penetration	ASTM E 1646/E331 Water Penetration
12 PSF < 0.01 CFM/ft² - PASS	20.5 PSF - Pass
Intertek Test Result L5460.01-901-44 R1	
Intertek Test Result L5461.01-901-44 R1	
STRUCTURAL TESTING ASTM E1592	
Intertek Test Result Q2599.04-301-44 R0	

NEGATIVE LOAD CHART WITH CLIP ATTACHMENT

				SECTION PROPERTIES						ALLOWABLE UNIFORM LOADS, psf For various clip spacings (i.e. span values)								
Width, in.	Gauge	Yield ksi	Weight psf	Top in Compression			Bottom in Compression			Negative Load								
				I_{xx} in ⁴ /ft.	I_{xx} (eff) in ⁴ /ft.	S_{xx} in ³ /ft.	I_{xx} in ⁴ /ft.	I_{xx} (eff) in ⁴ /ft.	S_{xx} in ³ /ft.	1'	1.5'	2'	2.5'	3'	3.5'	4'	4.5'	5'
12	24	50	1.41	0.0440	0.0449	0.0864	0.0471	0.0462	0.0989	185.0	169.4	153.8	138.1	122.5	106.9	91.3	75.6	60.0
12	22	50	1.66	0.0546	0.0555	0.1092	0.0577	0.0568	0.1230	205.0	184.4	163.8	143.1	122.5	101.9	81.3	60.6	40.0
12	20	33	2.03	0.0741	0.0741	0.1561	0.0742	0.0742	0.1605	205.0	184.4	163.8	143.1	122.5	101.9	81.3	60.6	40.0
12	18	33	2.64	0.0970	0.0970	0.2061	0.0970	0.0970	0.2061	205.0	184.4	163.8	143.1	122.5	101.9	81.3	60.6	40.0

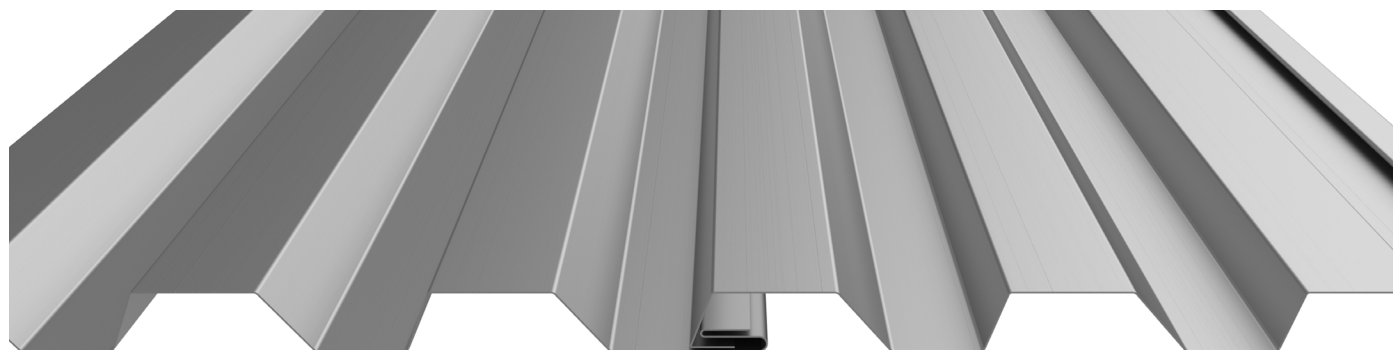
- Theoretical section properties for still panels have been calculated per AISI S100 Specifications for Design of Cold-Formed Steel Structural Members. Intertek Q2599.04-301-44 R0
- Charted Load/Span values are based on ASTM E1592-05, divided by a 2.00 Factor-of-Safety.
- Minimum recommended substrate (structure) recommendations:
 - Open-Framing (i.e. purlins)-16ga (design thickness 0.0566")
 - Plywood/OSB-15/32" or thicker is recommended to assure an effective degree of fastener thread engagement.
 - METAL DECK - 22ga (design thickness 0.0283")

POSITIVE LOAD CHART WITH CLIP ATTACHMENT

				SECTION PROPERTIES						ALLOWABLE UNIFORM LOADS, psf For various clip spacings (i.e. span values)									
Width, in.	Gauge	Yield ksi	Weight psf	Top in Compression			Bottom in Compression			Positive Load									
				I_{xx} in ⁴ /ft.	I_{xx} (eff) in ⁴ /ft.	S_{xx} in ³ /ft.	I_{xx} in ⁴ /ft.	I_{xx} (eff) in ⁴ /ft.	S_{xx} in ³ /ft.	1'	2'	3'	4'	5'	6'	7'	8'	9'	10'
12	24	50	1.41	0.0440	0.0449	0.0864	0.0471	0.0462	0.0989	753.6	376.8	240.1	135.0	86.4	60.0	44.1	33.8	26.7	21.6
12	22	50	1.66	0.0546	0.0555	0.1092	0.0577	0.0568	0.1230	1088.2	544.1	303.3	170.6	109.2	75.8	55.7	42.7	33.7	27.3
12	20	33	2.03	0.0741	0.0741	0.1561	0.0742	0.0742	0.1605	1196.4	598.2	286.2	161.0	103.0	71.6	52.6	40.2	31.8	25.8
12	18	33	2.64	0.0970	0.0970	0.2061	0.0970	0.0970	0.2061	1886.4	850.2	377.9	212.5	136.0	94.5	69.4	53.1	42.0	34.0

- Theoretical section properties for Steel panel have been calculated per 2020 AISI S100 North America Specifications for the Design of Cold-Formed Steel Structural Member.
- Allowable loads for Steel panels are calculated in accordance with 2020 AISI S100 specifications considering bending, shear, combined bending and shear and deflection. Allowable load considers a 3 or more equal span condition.
- When panels are installed over solid or closely fitted sheathing, the capacity is limited to the capacity of the underlying sheathing.

PANEL ATTACHMENT



Fastener Notes:

- When possible, lap panels away from prevailing wind direction.
- 15/32" OSB: #10 Burr Buster fasteners.
- 15/32" Plywood: #10 GP Fastener. Screws should be long enough to penetrate through the bottom of the plywood by 3/8".
- Dimensional lumber: #10 GP. Screws should penetrate the lumber 1".
- 16ga (or less) Steel furring: #10 or #12 Fastener with DP-1
- All trim screws used for roof or wall applications should have EPDM sealing washers.