

KEY FEATURES

- 12" coverage
- 24 & 22 gauge Tru-gauge™
- .032 & .040 Aluminum
- Substrate: ASTM A653 / A792
- Custom Lengths 3' to 35'
(Inquire for longer or shorter lengths)
- 2' Shortcut capability *(Fee applicable)*
- Concealed Fasteners: fasteners cannot leak
- 6.16 sq. inch (4.2%) free air flow per lineal foot of perforated panel
- Versatile in wall and soffit applications
- Panel options: Vented, Striations, Single V-Groove, Double V-Groove, and Flat Pan
- "Oil canning" is an inherent characteristic of roof and wall products, and not a defect, which is not a cause for panel rejection

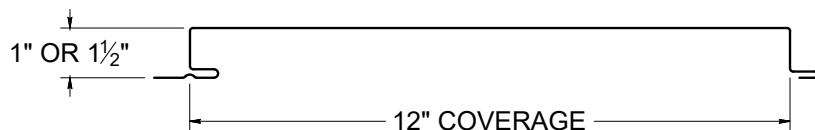
TESTING

- ASTM E1592 - Structural uniform static air pressure
- ASTM E283 - Air Infiltration (wall)
- ASTM E331 - Water Infiltration (wall)

Panel Profiles

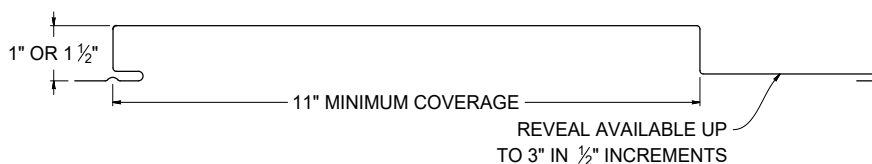
Lifetime Soffit™

Soffit



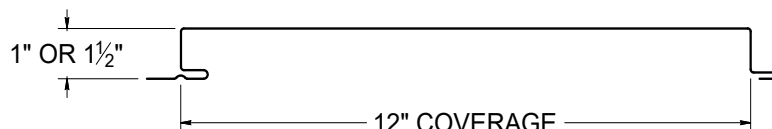
Shadowline™

Wall or Soffit



Smoothwall™

Wall or Soffit

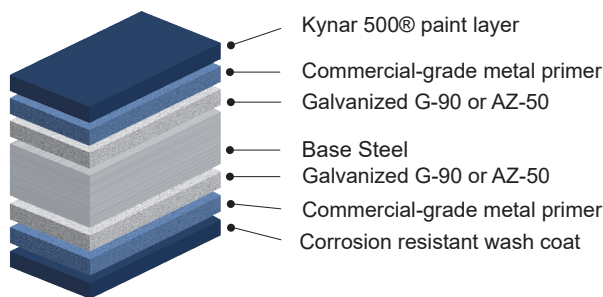


MATERIAL SPECIFICATIONS

- 24 Tru-Gauge™ Kynar 500® Painted Steel
- ▲ 22 Tru-Gauge™ Kynar 500® Painted Steel
- ◆ .032" Kynar 500® Painted Aluminum
- 24 Tru-Gauge™ G-90 Galvanized or AZ-50
- 24 and 22 Tru-Gauge™ bare ZINCALUME® Plus AZ-55 (No finish warranty – 25 yr. perforation warranty)
- G-90 Galvanized or AZ-50
- .040" Kynar 500® Painted Aluminum (please inquire)
- 24 Tru-Gauge™ Bonderized
- 22 gauge Rusteel Plus™ (A606)
- Custom 20 & 18 Tru-Gauge™ and .050" and .063" Aluminum (please inquire)(Brake-formed only)
- 16 OZ & 20 OZ Real Copper
- Kynar 500® and substrate testing data available (See website)

FINISHES

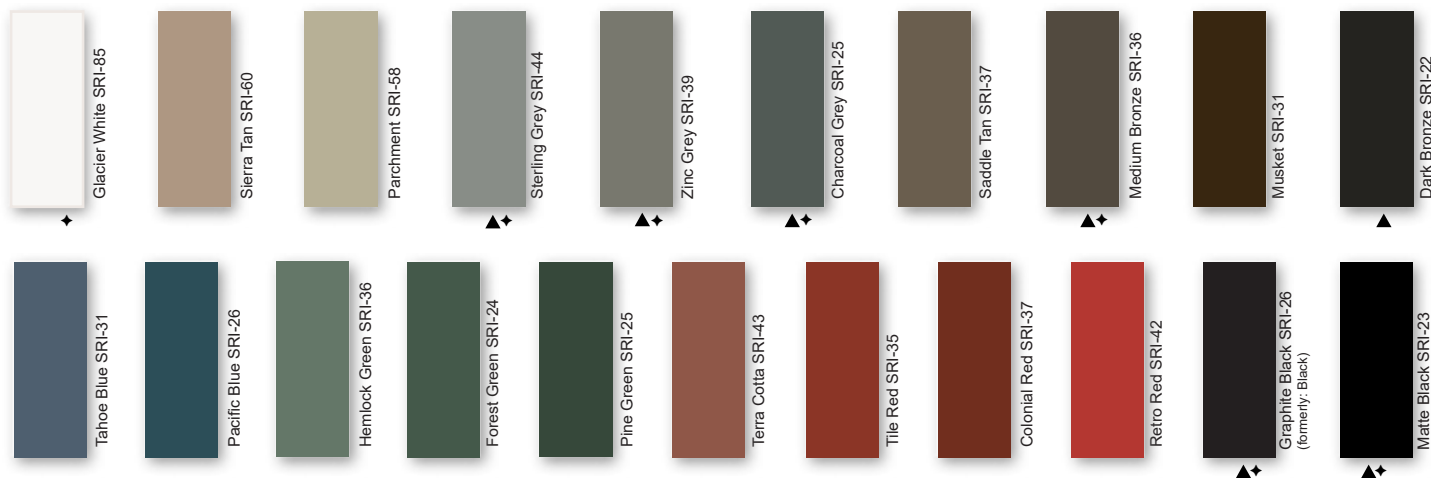
- 21 Standard Colors, 5 Metallic Colors and 4 Specialized Colors
- Kynar 500® Paint System - the ultimate in exterior durability and color retention
- “Cool” color pigments are specially designed to reflect infrared light, reducing heat gain to dwelling, and conform with ENERGY STAR® criteria
- Superior quality, two coat, 70% resin finish, applied at a 1 mil. thickness
- 40 year residential paint warranty
- 40 year commercial paint warranty: Contact TMP for warranty specifications
- “Oil Canning” is an inherent characteristic of roof and wall products, and not a defect, which is not a cause for panel rejection



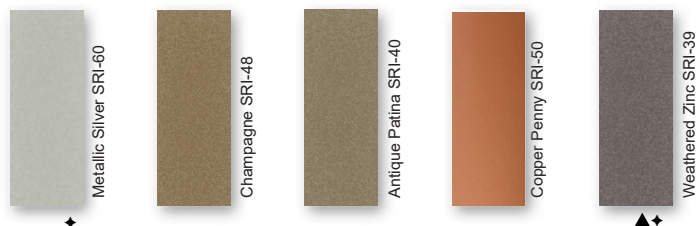
STANDARD COOL KYNAR 500® COLORS

▲ 22 Tru-Gauge™

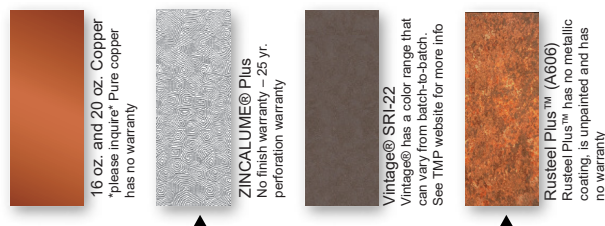
◆ .032 Aluminum



PREMIUM METALLIC COOL KYNAR® COLORS



SPECIALIZED MATERIAL



These printed chips provide a close representation of the colors.

Metal samples are available upon request. Coatings are low gloss 10-15% sheen. SRI = Solar Reflectance Index. SRI values listed above are in accordance with ASTM E 1980 and are based on actual testing.***Oil canning is not a cause for material rejection***



Rev. Date 05-26